



# IApioneer v. 3.0.3 Software User's Manual

---

Powered by the GeoSPHERIC™ v3.0 Common Code Foundation

# CONTENTS

1	Getting Started.....	1
1.1	UI Conventions.....	1
1.2	Installation and Licensing.....	1
1.3	How to Contact Us .....	2
1.4	Site Administration for Settings.....	2
1.5	User Interface (UI).....	4
1.5.1	Elements of the UI.....	4
1.5.2	The Backstage .....	5
2	Loading and Viewing Data.....	7
2.1	Loading Data Into the Session.....	7
2.1.1	Data Discovery .....	7
2.2	Viewing Raster Data.....	8
2.2.1	Exploring Raster Data.....	9
2.2.2	The Home Tab Visualization Tools .....	9
2.2.3	Auxiliary Viewers.....	10
2.3	Viewing Vector, Tie Point, and Annotation Layers .....	11
3	Data Management .....	12
3.1	Session Management.....	12
3.2	Raster Image Properties.....	12
4	Setting Up Camera Sensor Models .....	13
4.1	Spatial Reference Systems .....	13
4.1.1	Configuring Spatial Reference Systems .....	13
4.2	Frame Camera Sensor Model Configuration .....	14
4.2.1	Scanned Film Affine Parameters From Fiducials.....	15
4.2.2	Digital Affine from Sensor Information.....	18
4.2.3	Batch Frame Camera Setup .....	19
4.3	RPC Sensor Model Configuration.....	22
4.4	Orthographic Sensor Model Configuration.....	23

5	Customizing the View .....	24
5.1	Customizing the Viewer Display.....	24
5.1.1	Histogram Adjustment.....	24
5.1.2	Brightness, Contrast, and Filters .....	25
5.1.3	Image Overview .....	25
5.1.4	North Arrow, Zoom Indicator, and Grid Lines.....	25
5.1.5	Cursor Information.....	26
5.2	User Settings .....	26
5.2.1	Geolocation Formats.....	27
5.2.2	Measurement.....	29
5.2.3	Data Discovery Directories.....	30
5.2.4	Terrain.....	30
5.2.5	Pixel Cursor .....	32
5.2.6	Display.....	33
5.2.7	Grid Lines .....	34
5.2.8	ROI.....	35
6	Exporting Your Data .....	36
6.1	Crop, Resample, and Reproject Raster Data.....	36
6.2	Raster Data Type Conversion.....	38
6.3	Export Raster Data .....	38
6.4	Region of Interest and Image Chipping From Viewers .....	39
6.4.1	Region of Interest.....	39
6.4.2	Image Chipping .....	39
6.4.3	Screen Capture.....	40
6.5	Exporting Vector Data.....	40
6.5.1	Exporting multiple vector files as a single KMZ .....	41
7	IApioneer Analysis.....	42
7.1	What is IApioneer Analysis?.....	42
7.2	Annotation Layer Management.....	42
7.2.1	Creating an Annotation Layer .....	42

7.2.2	Saving Annotation Layers.....	43
7.2.3	Loading Annotation Layers into the Session.....	43
7.3	Editing an Annotation Layer.....	43
7.3.1	Annotation Visibility and Setting the Active Layer.....	43
7.3.2	Adding Shapes and Clipart .....	44
7.3.3	Adding Linear and Angular Mensuration Annotations .....	46
7.3.4	Editing Annotations.....	46
7.3.5	Editing the Text in a Text Box.....	47
7.3.6	Viewing and Editing Annotation Properties.....	47
7.4	IApioneer Analysis User Settings .....	48
7.4.1	Footprints.....	49
7.4.2	Mensuration Tools .....	50
8	FeatureXTract.....	57
8.1	What is FeatureXTract?.....	57
8.2	Vector Layer Management .....	57
8.2.1	Creating a Vector Layer.....	57
8.2.2	Saving Vector Layers .....	58
8.2.3	Loading Vector Layers into the Session .....	59
8.3	Editing a Vector Layer .....	59
8.3.1	Vector Layer Visibility and Setting the Active Layer .....	59
8.3.2	Creation Tools .....	60
8.3.3	Manipulation Tools .....	61
8.3.4	Detailing Tools.....	62
8.4	Building a Simple Model .....	63
8.5	Building More Complex Models.....	66
8.5.1	Using the Loft Tool to Create Conics.....	66
8.5.2	Using the Snapping Tool for Complex Geometry.....	67
8.5.3	Using Boolean Geometry to Combine Shapes .....	68
8.5.4	Using Parameterized Structures .....	69
8.6	Using the 3D Viewer.....	75

8.6.1	3D Viewer Navigation .....	77
8.6.2	Real-time Visualization.....	77
8.7	Combining it All Together .....	78
	Index.....	81

# 1 GETTING STARTED

## 1.1 UI CONVENTIONS

The UI Conventions used in this document are meant to convey visually the information from the UI to the manual. The following conventions are used in this manual:

- Button (both dialog and ribbon): **[OK]**
- Dialog label: *Parameters*
- Context menu item: *“Send to Viewer”*
- Tab label: *File*

## 1.2 INSTALLATION AND LICENSING

Installation of the IA pioneer software is very simple. Standard installer packages are available for MS Windows. Double click on the installer to launch the installation wizard, and follow the steps.

### Minimum System Requirements

- Windows XP SP2, Vista, or Windows 7 (32- or 64-bit)
- 4 GB RAM
- Core 2 Duo processor
- 7200 RPM hard drives
- 250MB Disk Space
- OpenGL 2.1 supported graphics card\*
- Two-Button Mouse with a scroll wheel

### Recommended System Requirements

- Windows 7 (64-bit)
- 8 GB RAM
- Core i5 processor
- 7200 RPM hard drives
- 1GB Disk Space
- Graphics Card: NVIDIA graphics card
- Two-Button Mouse with a scroll wheel

---

\* GPU acceleration for some processes not supported on all graphics architectures

## 1.3 HOW TO CONTACT US

Software support is available from IAVO Research and Scientific to assist with software technical issues. Before you contact us, please have the following information ready:

- Company Name
- Customer Number
- Email Address
- Product name and version
- Computer O/S version
- Error message, if any
- Steps necessary to re-create the issue

### By e-mail:

[support@iavo-rs.com](mailto:support@iavo-rs.com)

### By phone:

Direct: 919-433-2400

Toll Free: 888-860-4286

For more information, see <http://iapioneer.com/support.html>.

## 1.4 SITE ADMINISTRATION FOR SETTINGS

IApioneer provides a tool to configure the default settings for all users on a single computer. The IApioneer Administrative Setup tool allows a site administrator to set the default settings for a given machine, and even lock/unlock certain fields to prevent users from overriding the site specific settings. To run the Site Administrative Setup tool, click on the Windows button, then go to the IApioneer software group. Under IApioneer, choose to run Administrative Setup.

Upon launch, the settings dialog will be displayed with the same layout and fields as the User Settings dialog within IApioneer (see [User Settings](#)). Each field or group of fields can be set by the site administrator, and then locked. Once locked (Figure 1), the user cannot override the field value with their own custom appearance. If not locked, the user is free to specify their own settings for those fields. All of the User Settings for the main IApioneer application and any add-on modules can be configured in this manner.

If more than one system at a site needs to have the same default site parameters specified, it is recommended that the site settings are configured on one system, then the settings file is copied to

each of the other systems. That file can be found in the C:\ProgramData\IAVO Research and Scientific\GeoSPHERIC directory as the Preferences.dat file.

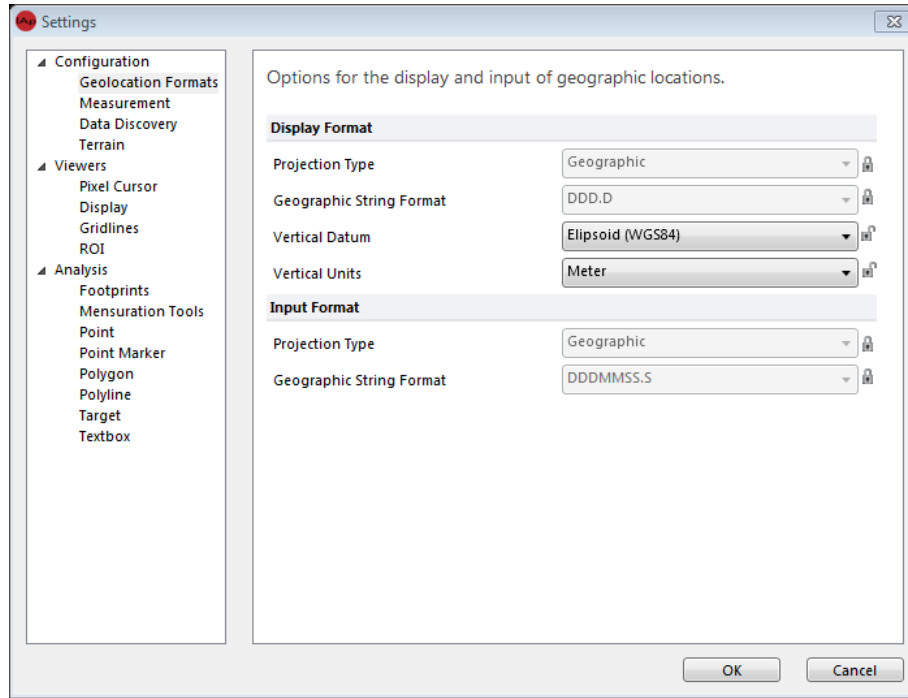


Figure 1. The Site Administrative Setup tool, showing some locked parameters and some unlocked ones.



## 1.5 USER INTERFACE (UI)

### 1.5.1 ELEMENTS OF THE UI

Figure 2 shows the components of the user interface.

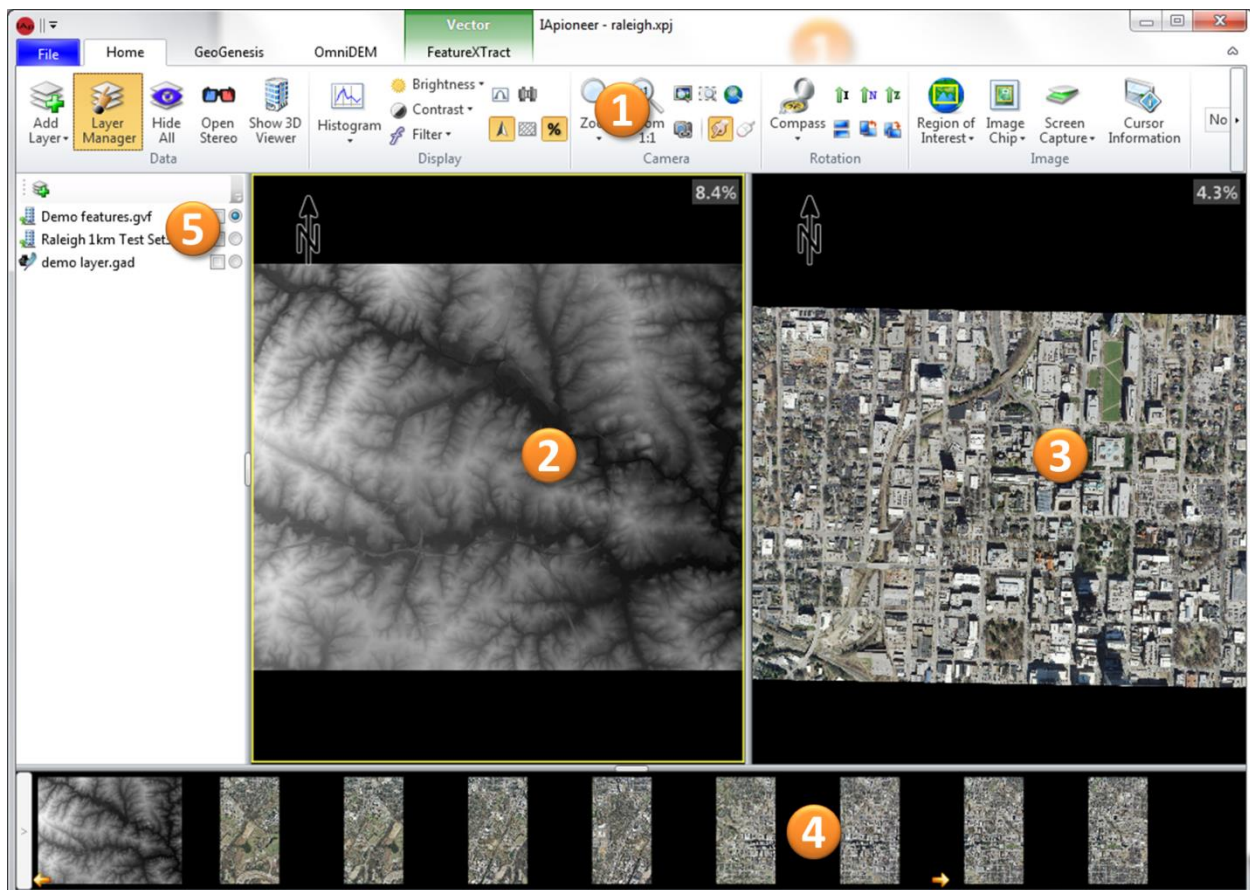


Figure 2. Components of the user interface, shown with the demo dataset loaded.

1. The Ribbon – The tabs of the Ribbon organize capabilities by module, allowing the user to interact with the data in a logical manner. The *Home* tab contains all of the camera and image viewing tools, including; zoom, rotation, brightness, contrast, and histogram adjustments. Each of these is applied to the active viewer only. In addition to the *Home* tab, each licensed processing module may add one or more tabs to the Ribbon.
2. Left Viewer – One of the two primary viewers used to interact with the data. Images can be sent to the Left Viewer from the Image Gallery. Data layers (vectors, tie points, and annotations) can be displayed from the Layer Manager.

3. **Right Viewer** – One of the two primary viewers used to interact with the data. Images can be sent to the Right Viewer from the Image Gallery. Data layers (vectors, tie points, and annotations) can be displayed from the Layer Manager.
4. **Image Gallery** – Thumbnails of the raster data loaded in the current session are displayed here. Images can be added to the Left or Right Viewers by right-clicking on the thumbnail in the Image Gallery and selecting “Send to Left Viewer” or “Send to Right Viewer”.
5. **Layer Manager** – Vector, tie point, and annotation layers loaded in the current session are listed here. Each has a checkbox to indicate whether or not it is displayed in the viewers, and a radio button to select the actively editable layer.

## 1.5.2 THE BACKSTAGE

Data loading and system parameters are accessed through the Backstage (Figure 3), which can be brought up by clicking on the *File* tab in the Ribbon. Here, you can load/remove data, save/open sessions, and access the Help and Settings for the application.

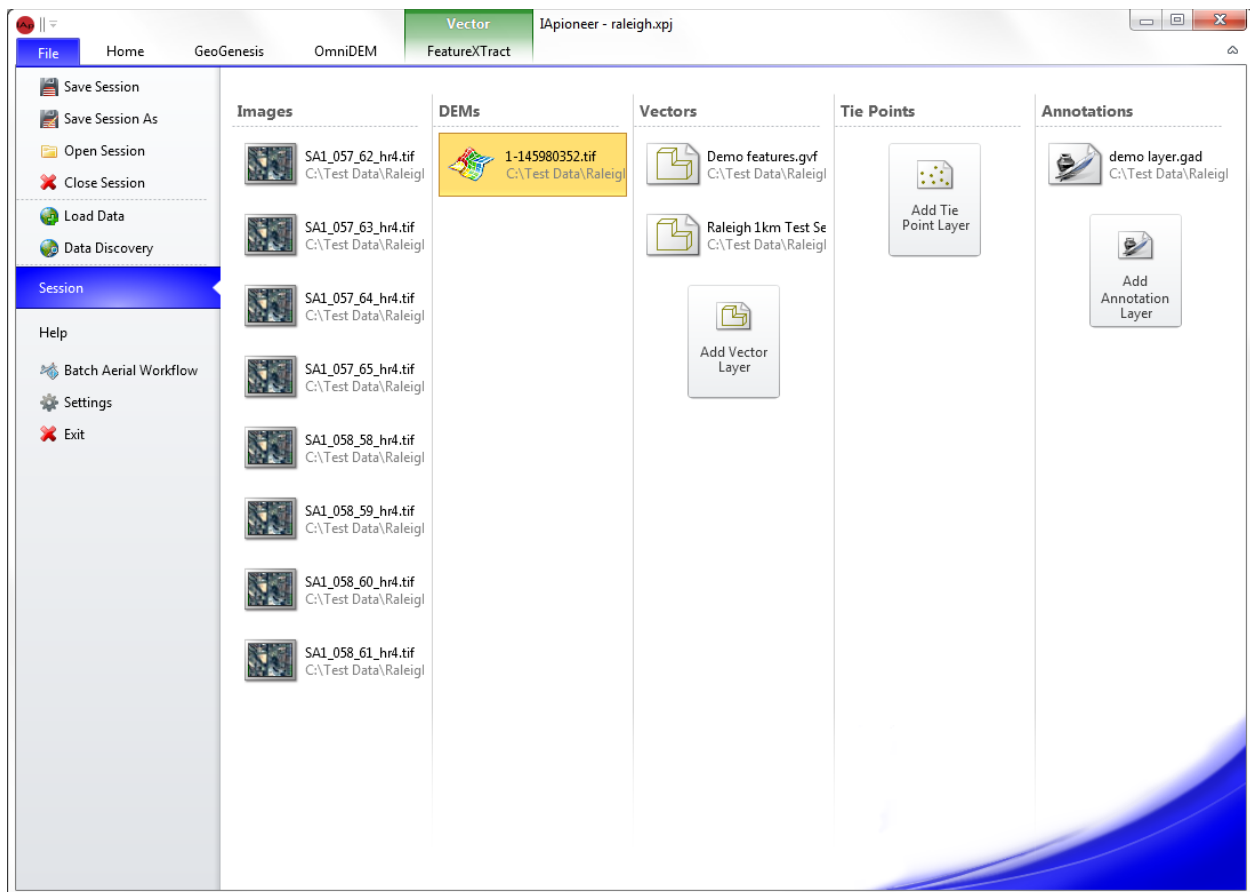


Figure 3. The Backstage, shown with the demo dataset loaded.

The *Session* section of the Backstage lists all of the data currently loaded in the session. It also has the ability to create new data layers (vectors, tie points, and annotations). The data are organized by category: Images, DEMs, Vectors, Tie Points, and Annotations. DEMs are a special form of raster image, where the pixel value corresponds to an elevation.

## 2 LOADING AND VIEWING DATA

You can load a number of different types of data into IApioneer, including: satellite imagery, aerial imagery (scanned film and digital images), orthographic images, Digital Elevation Models (DEMs), 2D and 3D vectors, tie points, and annotations.

### 2.1 LOADING DATA INTO THE SESSION

To load data, go to the Backstage and select [**Load Data**]. Navigate to where your data is located and select the data that you wish to load into the session.

As the data is ingested, it will be added to the data items in the *Session* section of the Backstage. Raster data without pyramids (reduced resolutions, R-sets, etc.) will have the pyramids automatically generated for optimal viewing quality. Until the pyramids have been generated, you will have minimal functionality for those images. Raster images with no pyramids generated will have a warning icon overlaid on the image icon in the *Session* data section.

**Note:** Large datasets may take some time to load, especially large vector sets. Be patient, as these will appear in the *Session* shortly.

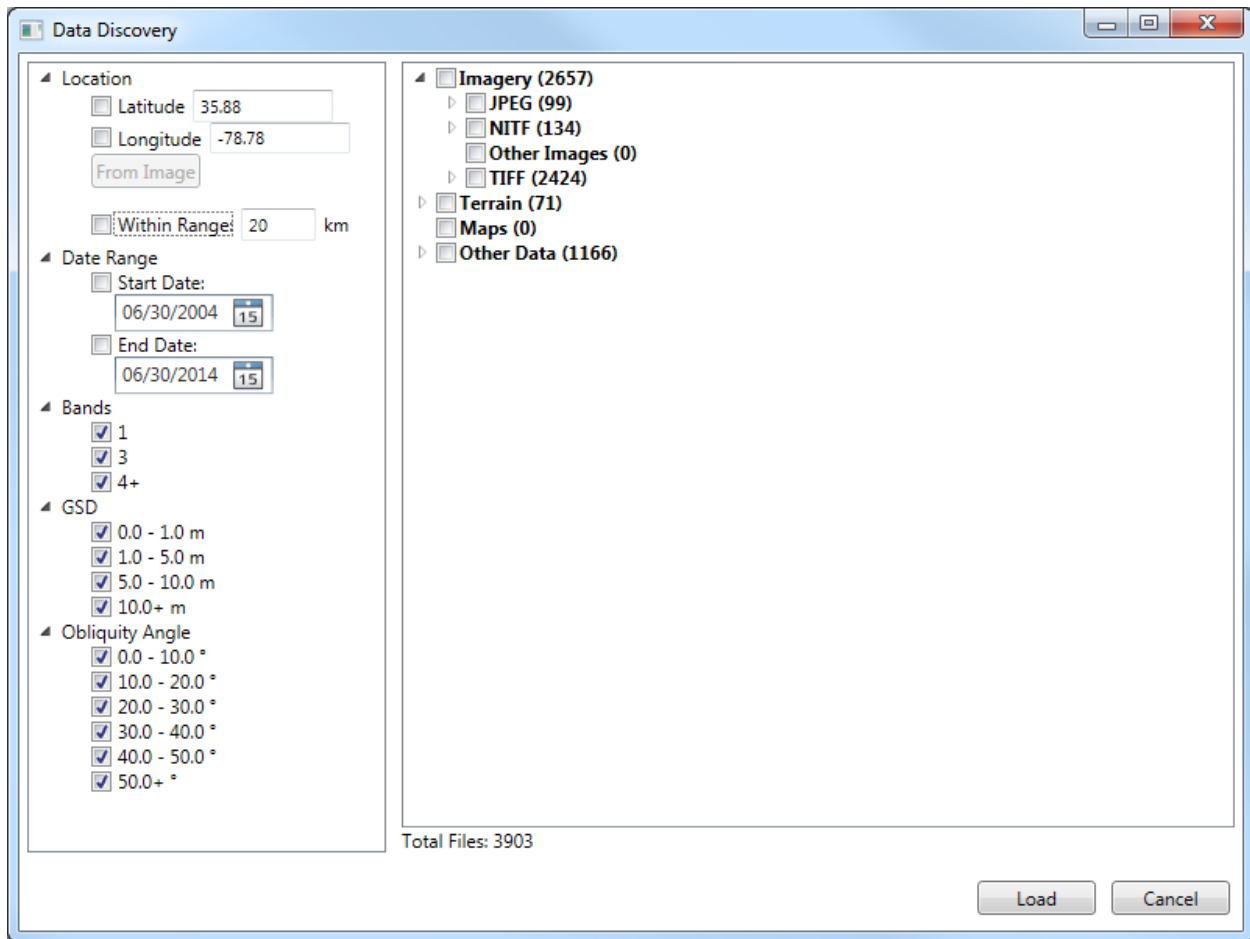
Alternatively, from the Windows Explorer, you can select one or more supported data types and drag them into an IApioneer viewer. If only a single image is selected, that image will be loaded into the current session, and displayed in the viewer that it was dragged into. If only a single data layer is selected (e.g., feature store, annotation layer, etc.) then that data layer file is loaded into the current session and made the active data layer for editing. If more than one file (raster or data layer) is selected, all supported files will be loaded into the current session.

#### 2.1.1 DATA DISCOVERY

Instead of directly loading data into the Session, you can use the Data Discovery mechanism to trawl your local and remote data archives for data that meets your production criteria. To use Data Discovery in your workflow, you must first specify the data repositories you wish to use. You can do this in the Data Discovery section of the IApioneer settings (see [Data Discovery Directories](#)).

Once the data repositories have been identified, 3D FeatureXtract will crawl the directory structures, building a list of files and metadata for use in the Data Discovery process. This may take anywhere from a few seconds to a few minutes, depending on how many files are in the repository.

Go to the Backstage and select [Data Discovery] to launch the Data Discovery tool. Figure Z shows the Data Discovery tool with nearly 4000 files in the repository. From here you can search by location, date, number of bands, sampling resolution, and obliquity angle. The results are categorized by type of data, and then by subtype.



**Figure 4. Data Discovery within a defined repository.**

Once the desired filters have been placed, use the checkboxes next to the found items to select data to load into the current Session. Entire categories can be selected at once by checking the box next to the category name. Single items can be added or removed from the list by checking/unchecking the appropriate box. Once all the data has been identified, press [Load] to ingest the selected data into the current Session.

## 2.2 VIEWING RASTER DATA

Once the data has been loaded into the current session, it can be sent to the viewers for visualization and exploitation. Raster Data, once loaded, appear in the Image Gallery as a set of thumbnails (Figure 2, area 4). Other geospatial data (vectors, tie points, and annotations) appear in the Layer Manager (Figure 2, area 5).

### 2.2.1 EXPLORING RASTER DATA

Raster data can be loaded into the viewers by right-clicking on the thumbnail of the data in the Image Gallery and selecting “Send to Left Viewer” or “Send to Right Viewer”. The image will be loaded into the chosen Viewer and a small arrow will appear in the bottom corner of the image thumbnail in the Image Gallery to indicate which Viewer the image is loaded in.

You can pan the image by clicking and dragging with the center mouse button (the scroll wheel on many mice). Free zooming can be performed by using the scroll wheel of your mouse. Click into the desired Viewer to make it active, the roll the mouse wheel forward (away from you) to zoom out, and backward (toward you) to zoom in. The zoom is centered on the viewer, allowing you to keep the region of interest centered at all times, no matter where the mouse cursor is.

If you have no third mouse button or scroll wheel, you can pan by holding down both the left and right mouse buttons simultaneously and dragging. Zooming can be performed using the fixed zoom intervals in the *Home* tab of the Ribbon.

The divider between the Left and Right Viewers can be moved by clicking and dragging anywhere on the divider.

### 2.2.2 THE HOME TAB VISUALIZATION TOOLS

The *Home* tab (Figure 5) contains a number of visualization tools useful for interacting with the loaded data.

The *Display* group contains tools for determining how the imagery is displayed, including options for *Histogram* adjustment, *Brightness/Contrast*, and *Filters* for removing noise and enhancing structure. There are also a number of overlays for context awareness, including display of the North arrow, geospatial grid lines, zoom ratio, overviews, and working regions. For more information on these overlays, see [Customizing the Viewer Display](#).

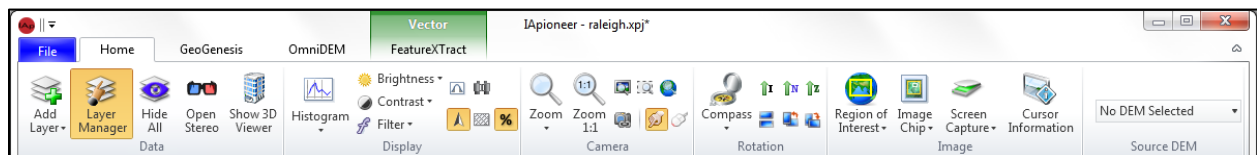


Figure 5. The Home tab contains visualization tools for data exploration.

The *Camera* group contains tools for manipulating the position of the camera, including the zoom tools, jump to location, viewer linking, and movement modes. **[Camera Lock]** is used to geographically link the viewers so that movement (pan and zoom) in one corresponds to movement in the other. The camera movement mode can be selected as either **[Pan Mode]** (default) or **[Roam Mode]**. In the roaming mode, movement is accomplished by holding down the middle mouse button and dragging in the direction that you want the image to move.

The *Rotation* group contains the tools to allow you to rotate the current view. Free rotation can be performed by selecting **[Compass]** and using the slider to set the desired orientation. There are also a few pre-determined rotation angles. **[Image Up]** orients the image such that the columns of the image are aligned with the columns of the viewer. **[North Up]** orients the image in the viewer so that the direction to North – as determined by the spatial reference system – is aligned with the columns of the viewer. **[Z Up]** orients the image so that vertical changes in elevation (such as the vertical lines of tall buildings) are aligned with the columns of the viewer. There are also quick rotate buttons to quickly rotate 90 degrees in either direction, or 180 degrees.

The *Source DEM* allows the user to specify the DEM used for viewer-related processing, including Camera Lock and a number of exploitation and analysis tools. The drop down allows the user to select any currently loaded DEM to use as the base DEM. Alternatively, the No DEM Selection option uses the default low-resolution DEM included with the software.

### 2.2.2.1 JUMP TO LOCATION

The **[Jump to Location]** button in the Camera group on the Home tab provides the mechanism for you to center the active viewer on a specific geospatial or pixel location. For geospatial coordinates, the coordinate templates for string input are controlled by the *Display Format* designated in the *Geolocation Formats* settings (see [Geolocation Formats](#)). If the Elevation parameter is left blank, then IApioneer uses a DEM elevation lookup for the Jump To Location operation. Once valid locations have been entered, press **[OK]** to center the active viewer on the provided location.

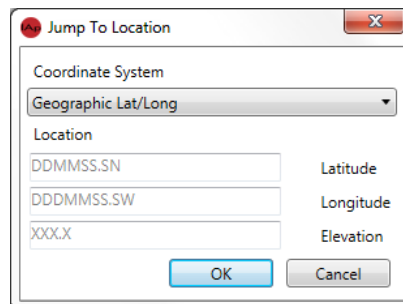


Figure 6. The Jump to Location dialog lets you center on a specific point.

### 2.2.3 AUXILIARY VIEWERS

If you need more than two images for context awareness during processing, you can launch an image into an auxiliary image viewer by right clicking on the image thumbnail in the Image Gallery and selecting “*Open in New Viewer*” . A new image viewer will be launched with the selected image loaded. The auxiliary viewers are image viewers only. They do not contain other data layers and cannot be used for processing or production with any of the IApioneer modules.



## 2.3 VIEWING VECTOR, TIE POINT, AND ANNOTATION LAYERS

Data layers are types of data that can be overlaid on top of imagery to provide additional exploitation capabilities. Some IA pioneer modules allow the creation and editing of data layers. Clicking on **[Layer Manager]** in the *Data Layers* group on the *Home* tab expands the Data Layer Manager if it is not currently displayed, and hides the Data Layer Manager if it is already visible (Figure 7). You can also click on the button of the divider between the Left Viewer and the Data Layer Manager to show/hide the Data Layer Manager. The Data Layer Manager can be resized by clicking and dragging on the divider.

Each data item in the Data Layer Manager has both a checkbox and a radio button beside it. The checkboxes indicate whether or not the data item is visible in the viewers. The radio box indicates which data item is currently being edited. Any number of data layers can be visible at once, but only one data layer can be edited at a time.

Note: To quickly hide all off the data layers, select **[Hide All]** in the *Data Layers* group on the *Home* tab.

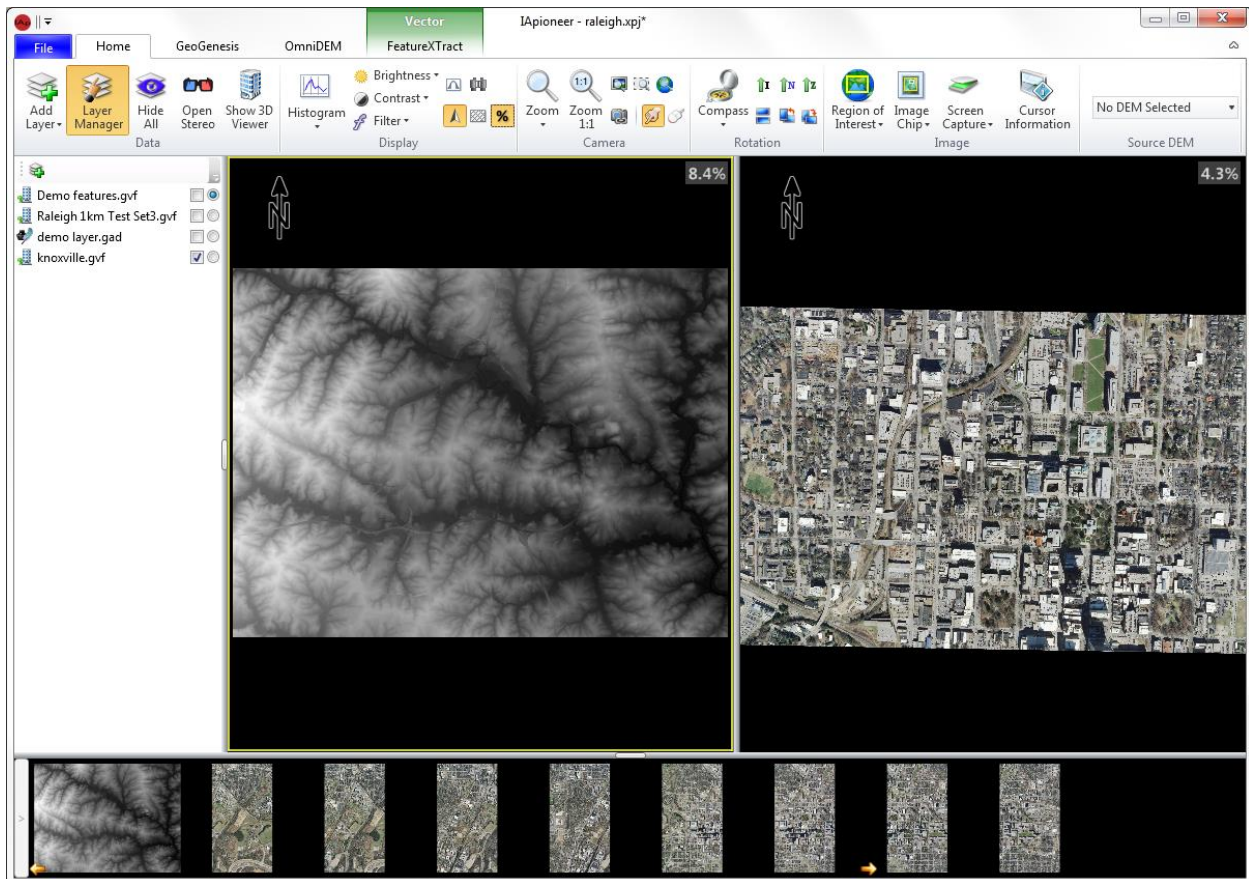


Figure 7. The UI showing the Data Layer Manager.



## 3 DATA MANAGEMENT

### 3.1 SESSION MANAGEMENT

The data loaded in the application is considered a Session. IA pioneer-based modules work on one Session at a time. IA pioneer can save the state of your workspace for later processing using the **[Save Session]** or **[Save Session As]** functionality in the Backstage, accessed from the *File* tab. The saved Session (\*.xproj file) contains the references for the currently loaded data items, allowing for quick recovery of a previous set of data.

Archived Sessions can be retrieved by selecting **[Open Session]** and navigating to the desired Session file. Alternatively, double-clicking on a \*.xproj file in the Windows Explorer will open IA pioneer (if it is not already open) and load the selected session file.

Clicking on **[Close Session]** closes out the current Session, prompting you to save individual data items that have pending changes. Once pending changes to individual items have been saved, you will be prompted to save the current Session before all items are removed and a new Session is created.

### 3.2 RASTER IMAGE PROPERTIES

To view or edit the properties of a raster image, go to the *Session* section on the Backstage, right click on the image that you wish to modify, and select *“Properties”*. The *Properties* dialog has four tabs:

- **General** – This tab contains information about the image itself, including basics such as file size, type, image dimensions, number of bands, and the type of image (Image or DEM). It also has indicators as to whether or not the image has embedded metadata for spatial referencing information, affine transforms, or RPC sensor models. Finally, it contains an estimate of the image GSD and its geospatial bounding box.
- **Metadata** – This tab contains metadata tags embedded in image formats such as NITF.
- **Band Info** – This tab provides information about the number of bands in the image, each band’s format, and a histogram estimate per band.
- **Sensor Model** – This tab is where the user is able to view or set the sensor model information used for the photogrammetric calculations with each of the software processing modules. There are three sensor model formats supported: frame camera, RPC, and orthographic.

**Note:** You can specify that an orthographic image is a DEM from the General Properties tab. Click on the Image Type button to change an orthographic image from a raster Image to a DEM.

## 4 SETTING UP CAMERA SENSOR MODELS

Most geospatial raster data have inherent metadata, which incorporates both the spatial referencing system that the data was acquired in, as well as the sensor model defining the projective nature of the image data. IApioneer supports three sensor model formats: frame camera (scanned film and digital back), RPC, and orthographic. Any image data loaded without embedded sensor model information will default to a unitary orthographic sensor model.

To set/modify the sensor model for a raster image, go to the *Session* section of the Backstage and right-click on the image. Select “*Properties*”, and navigate to the *Sensor Model* tab of the *Properties* dialog.

### 4.1 SPATIAL REFERENCE SYSTEMS

A Spatial Reference System (SRS) is a coordinate-based system (local or global) that is used to locate geospatial data points. A SRS consists of a Projection and a Datum.

A Projection transforms the earth’s 3D surface into a flat (2D) representation at either a local or global level. There are a number of projections in current use, but most are based on a conical, cylindrical, or azimuthal model.

A Datum is a mathematical construct approximating the earth’s surface, allowing measurements to be made along the surface. The most commonly used Datums are ellipsoidal, or geoidal in nature. The ellipsoidal model approximates the surface as a 3D ellipsoid, as defined by a set of mathematical parameters. An example would be the WGS84 ellipsoid. A geoidal model uses a network of physical or derived measurements to define the 3D surface. An example would be the EGM96 model.

If you look at the same point using two different projections or datums, the geospatial coordinates of that point will differ. Be sure to use the correct SRS parameters for your data to ensure accurate processing.

#### 4.1.1 CONFIGURING SPATIAL REFERENCE SYSTEMS

All sensor models contain a Spatial Reference System that defines the map projection of the data. For some data (e.g., RPC sensor models), the spatial reference system is an intrinsic one, whereas it needs to be explicitly assigned for other data. For all raster data sensor models, the specification of the spatial reference system follows the same process. Once the Sensor Type has been specified, select **[Change]** beside the *Spatial Reference System* identifier to configure the data’s spatial reference system.

Figure 8 shows the *Spatial Referencing* dialog. Here you can set the *Projection*, *Datum*, *Linear* and *Angular* Units, and the map projection *Zone* (as required). Currently, there are a limited number of spatial reference systems that can be manually set in the application, though we ingest thousands of spatial reference systems through Well Known Text (WKT) strings.



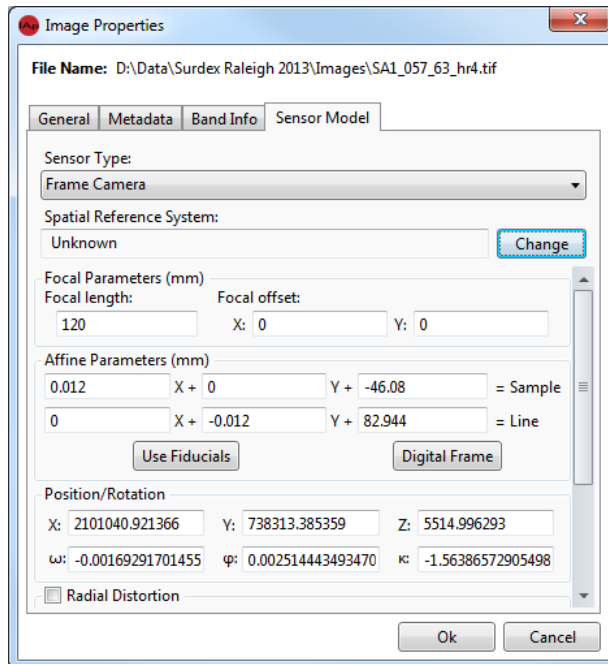


Figure 9. Frame camera sensor model configuration.

Once both the IO and EO parameters of the sensor have been set, press **[OK]** to apply the new sensor model. In the Backstage, an asterisk will appear beside the dataset’s name, indicating that the metadata has changed. The metadata must be saved for the changes to persist after the session has been closed out or the data has been removed from the current session.

#### 4.2.1 SCANNED FILM AFFINE PARAMETERS FROM FIDUCIALS

Much of the imagery taken prior to 2005 was acquired on film and then digitized by means of a scanner. The affine parameters are therefore irregular. The affine parameters can be computed from the sensor fiducial parameters and their measured locations on the image. Selecting **[Use Fiducials]** launches the Fiducial Selection workflow. This workflow walks you through the process of setting up the fiducial detection for the image.

The first stage of the Fiducial Selection workflow (Figure 10) is where you set the sensor coordinates of the fiducials, and the orientation of the film on the scanner. The sensor fiducial locations are typically found in a camera calibration report, such as that seen in Figure 11. Select the radio button for the number of fiducials you were given in your calibration information, and enter the coordinates. If you have a camera file (\*.CAM) containing the fiducial information, you can load those values from that file.

**Note:** The 4 Fiducials configuration option works for either “corners” or “cross” configurations – fiducials lying on the corners or the sides of the sensor, respectively.

Use the rotation arrows to change the orientation of the displayed image so that it appears “image up” in the display. While doing so, you can use the scroll wheel to zoom in and out, and the left mouse button to pan around to help you set the orientation. Once the fiducial coordinates and the scanner orientation has been set, click **[Next]** to proceed to the second stage.

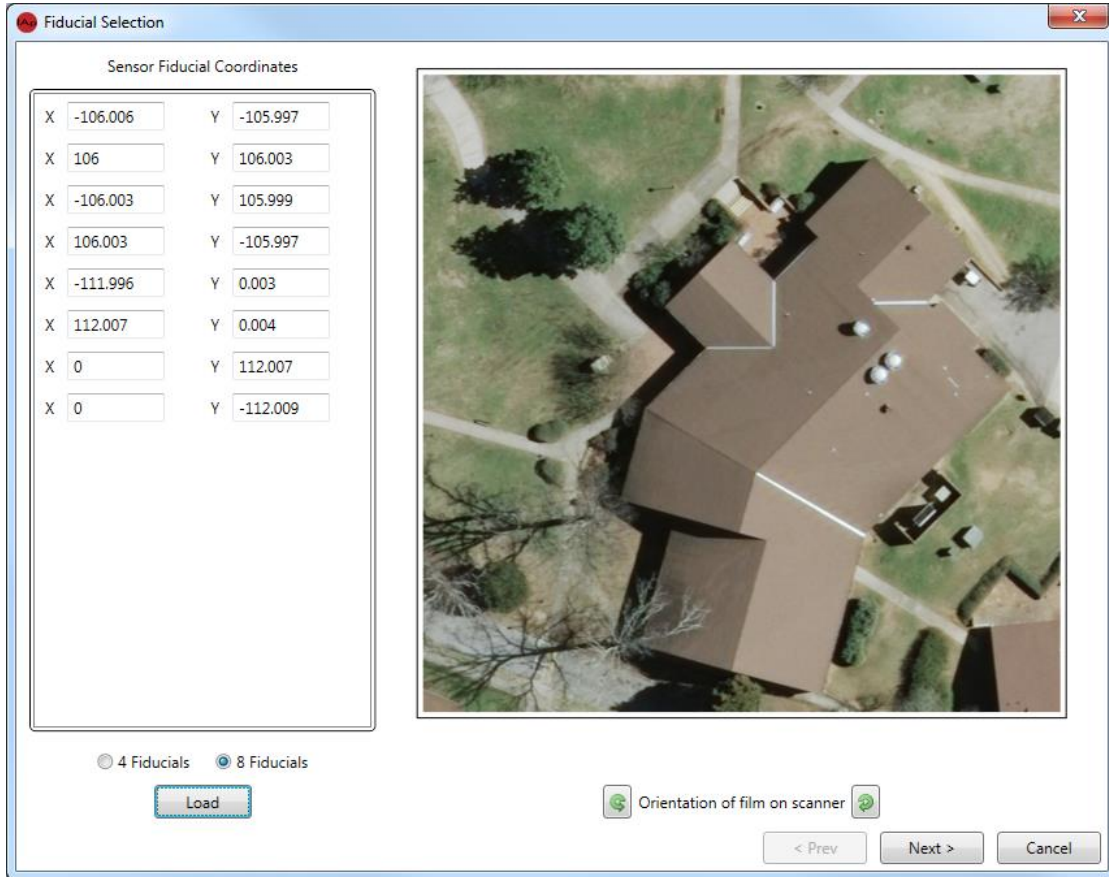


Figure 10. The first stage of the Fiducial Selection workflow, where you set the sensor’s fiducial coordinates.

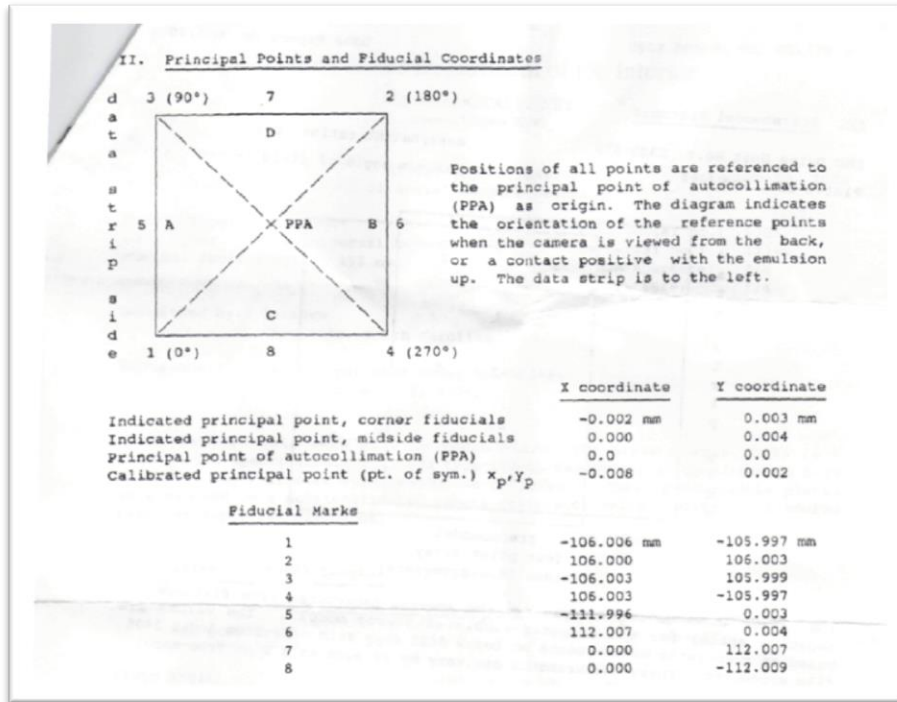


Figure 11. Scanned in portion of a camera calibration report showing the principal point and fiducial locations.

In between the first and second stages of the workflow, an auto-detection process is run to identify the locations of the fiducials in the image. The second stage (Figure 12) shows you the result of the auto-detection process on all the fiducials specified in the first stage. If there are fiducials that were not correctly aligned with the image locations, you can manually edit their positions.

Click on the thumbnail corresponding to the fiducial you wish to edit. The sub-image will expand to give you a large canvas on which to locate the fiducial. Click and drag the image to align with the fiducial mark. You can zoom in and out to better find the precise location of the center of the fiducial marker on the image. Click **[Done]** to finalize the position. Repeat the process for any fiducials that need refinement.

If you get too far off track, or wish to start over, click **[Auto Detect]** to re-run the auto-detection process. Once the fiducial marks have been aligned, press **[Finish]** to compute and assign the affine parameters.

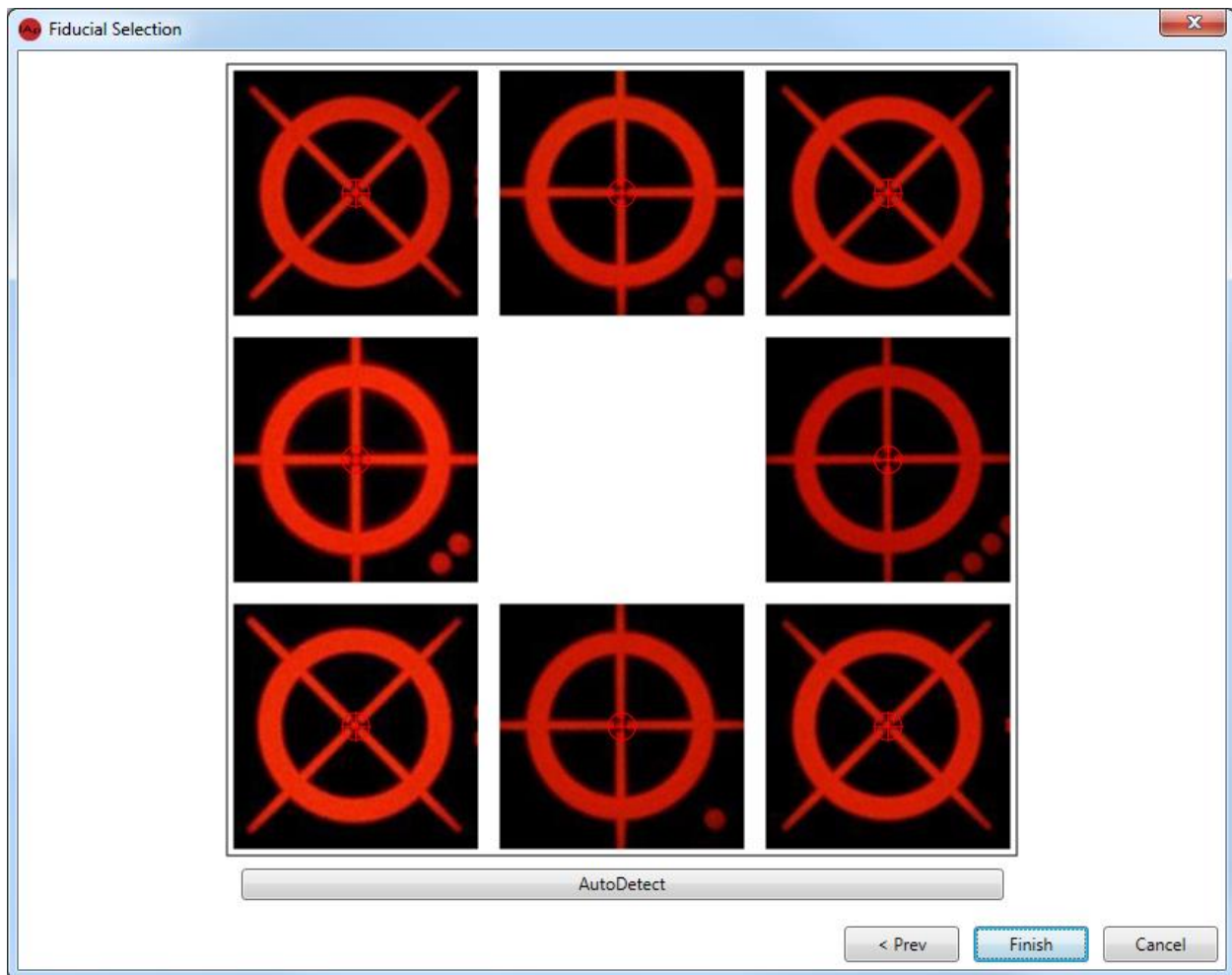


Figure 12. The second stage of the Fiducial Selection workflow, where you can confirm the fiducial alignment.

#### 4.2.2 DIGITAL AFFINE FROM SENSOR INFORMATION

Images taken with a digital back (modern imagery) have no fiducials. Instead, the affine is regular and can be computed directly from the sensor information; knowing either the sensor size or the size of a pixel is sufficient.

Click **[Digital Frame]** to launch the *Digital Frame Affine Calculation* dialog. Select the radio button for the parameter that you know, either *Pixel Dimensions* or *Sensor Dimensions*. Enter the *Width* and *Height* for those parameters and select **[OK]** to set the digital affine.

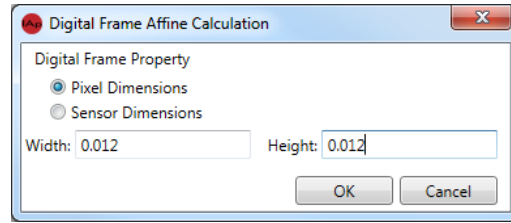


Figure 13. The Digital Frame Affine Calculation dialog with pixels of size 12 $\mu$ m x 12 $\mu$ m.

### 4.2.3 BATCH FRAME CAMERA SETUP

Aerial imagery is often acquired in large batches, either from a set of flight lines or from some other pre-specified flight path. Manually editing each of the sensor models for these images would be quite a chore. You can configure the sensor models for an entire batch of aerial imagery using the **[Batch Aerial Workflow]** option from the Backstage.

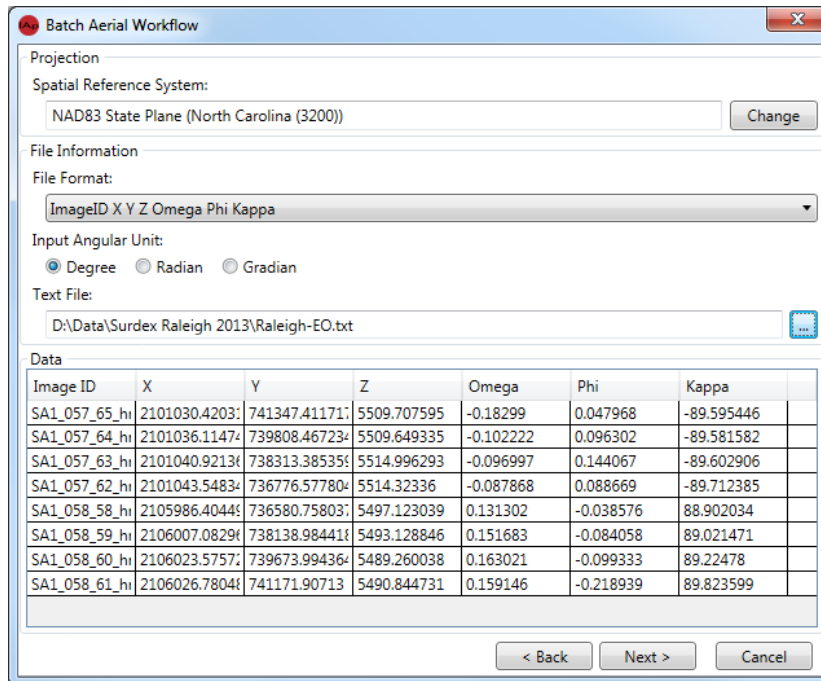
The Batch Aerial Workflow will walk you through each of the steps for configuring the sensors models for a handful of images up to thousands at one time. You simply follow the steps to set the fields for your cameras: internal parameters, external parameters, and data pairing parameters.

The first stage of the Batch Aerial Workflow involves providing the IO parameters of the cameras. This includes the focal lengths, focal offsets, distortion parameters, and internal affine information. This information is provided with the camera calibration reports received with your data. Make sure to choose the appropriate *Sensor Affine* model. If you have images with fiducials, choose the *Standard* option. For fully digital cameras, choose the *Digital* option. Figure 14 shows the first stage with the parameters for our test data entered. Once the IO information is correct, press **[Next]** to continue.



Figure 14. First stage of the Batch Aerial Workflow, where you provide IO parameters.

The second stage of the Batch Aerial Workflow is where you specify the exterior orientation parameters. These include the spatial reference system, the text file and containing the EO parameters, and the format of the text file. Figure 15 shows the second stage, with appropriate values for our test data. Once the information is correct, press **[Next]** to continue.



**Figure 15. Second stage of the Batch Aerial Workflow, where you provide the EO parameters.**

It may happen that the Image IDs in the EO text file do not match exactly with the image names that you have loaded in your project. Stage three of the Batch Aerial Workflow allows you to match the ID parameters in your EO text file with the appropriate images loaded into your project. If the Image IDs do not match with the image files, simply select the drop down box next to each Image ID and choose the image it corresponds to. Click [Next] to finish the workflow process and the software will automatically generate the sensor models for every image in your project.

Once the process is complete, you should save the project. This will save the metadata for the sensors you have just configured.

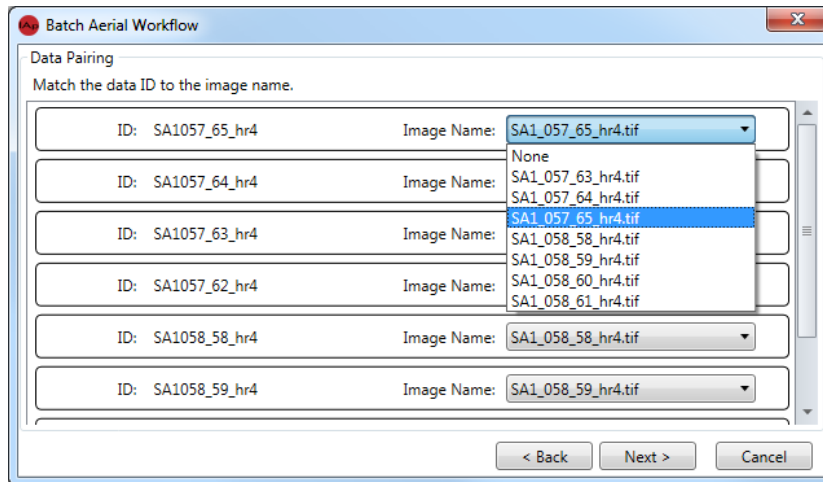


Figure 16. Third stage of the Batch Aerial Workflow, where you match loaded images with their Image IDs.

### 4.3 RPC SENSOR MODEL CONFIGURATION

Satellite imagery is typically delivered with its rigorous camera model information hidden behind a generic replacement sensor model in the form of RPCs. RPC data are usually either embedded in the image file itself as metadata, or supplied via a secondary metadata file. This information can be read from the external file, either by loading an IKONOS metadata file, or a standard RPC00B file (as seen in Figure 17).

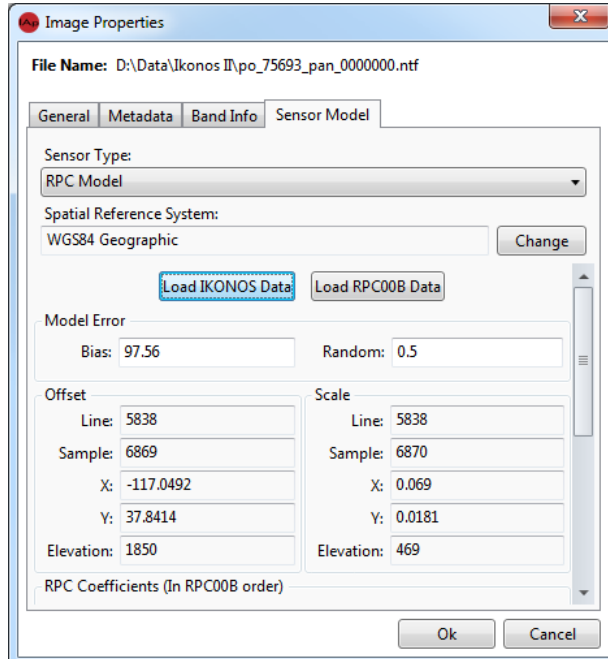


Figure 17. RPC sensor model configuration.

Once the RPC parameters have been set, press **[OK]** to apply the new sensor model. In the Backstage, an asterisk will appear beside the dataset's name, indicating that the metadata has changed. The metadata must be saved for the changes to persist after the session has been closed out or the data has been removed from the current session.

## 4.4 ORTHOGRAPHIC SENSOR MODEL CONFIGURATION

Orthographic images (orthos) have been processed to remove perspective from the raster data so that each pixel falls on a point of a georeferenced grid. An orthographic sensor model is defined by the geographic coordinates of its *Upper Left Corner* and the *Post Spacing* in both the X (horizontal) and Y (vertical) directions (Figure 18). For most ortho images, the data has been processed so that traversing along a row of pixels corresponds to stepping along the X direction in the spatial reference system only, and traversing along the columns corresponds to stepping along the Y direction of the spatial reference system only. However, it is possible that movement along either row or column can correspond to stepping both in the X and Y directions, geospatially. This is referred to as a non-aligned ortho image.

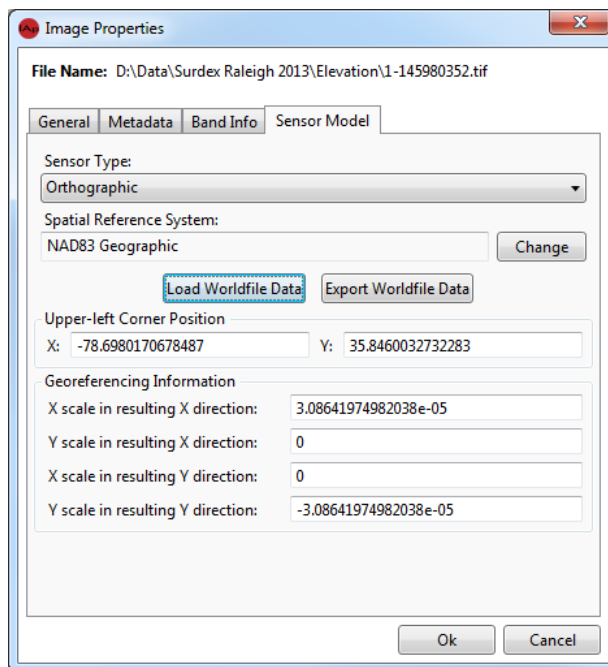


Figure 18. Orthographic sensor model configuration.

Once the ortho parameters have been set, press **[OK]** to apply the new sensor model. In the Backstage, an asterisk will appear beside the dataset's name, indicating that the metadata has changed. The metadata must be saved for the changes to persist after the session has been closed out or the data has been removed from the current session.

## 5 CUSTOMIZING THE VIEW

### 5.1 CUSTOMIZING THE VIEWER DISPLAY

The *Display* group in the *Home* tab contains a number of tools useful for adjusting how the selected image is displayed, as well as contextual overlays that can provide a better overview for exploitation.

#### 5.1.1 HISTOGRAM ADJUSTMENT

Selecting [**Histogram**] launches the *Color Curves* dialog (Figure 19). In this dialog, you can affect a color transform on individual channels, or all channels simultaneously, of the image in the active viewer. Output values from the color transform are scaled between 0 (black) and 1 (white). A number of *Presets* are available for quick color transformations, including:

- *Piecewise Custom* – Allows you to manually set the *Input* and *Output* values for the curve. These can be set by manually clicking on a curve endpoint and dragging it to the desired position, or by manually entering the values in the text boxes below the curves.
- *Linear Min/Max* – Sets the minimum image value to an output value of 0, and the maximum image value to a value of 1.
- *Linear 2%* - Uses the histogram to scale the output between the 2<sup>nd</sup> percentile and 98<sup>th</sup> percentile of the image values.
- *Equalization* – Transforms the input image histogram into a uniform distribution.
- *Gaussian* – Transforms the input image histogram into a normal distribution.

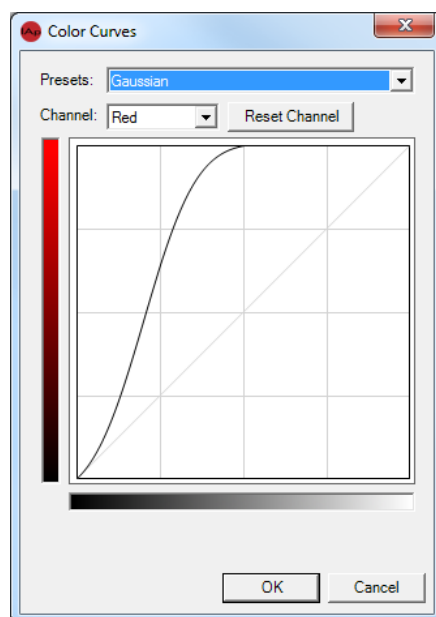


Figure 19. Color Curves dialog showing a Gaussian transformation.

As you are making changes to the color curves, the image in the active viewer will adjust according to your changes. Selecting **[OK]** will fix those adjustments in place, while **[Cancel]** will revert to the last saved color curves.

### 5.1.2 BRIGHTNESS, CONTRAST, AND FILTERS

Use the **[Brightness]** and **[Contrast]** options to adjust the overall brightness and contrast of the image in the active viewer. Clicking on one of the above options will open a gallery of preset choices, as well as a manual slider option at the bottom of the list. As changes are made, the active image will adjust accordingly to provide a preview of the changes.

Use **[Filter]** to choose sharpening, smoothing, and haze reduction filters. These filters are applied to the displayed data only, and can be used to quickly enhance the active image. There are five options for quick filters:

- *Low Pass* – This smoothing filter performs a low pass convolution on the data in the active image. It uses a 5x5 smoothing kernel with normalized weights.
- *Gaussian Low Pass* - This smoothing filter performs a low pass convolution on the data in the active image. It uses a 5x5 smoothing kernel with Gaussian weights. It provides less smoothing distortion than the *Low Pass* filter.
- *High Pass* – This sharpening filter performs a high pass convolution on the data in the active image. It uses a 5x5 convolution kernel with normalized weights.
- *Gaussian High Pass* – This sharpening filter performs a high pass convolution on the data in the active image. It uses a 5x5 convolution kernel with Gaussian weights. It provides less sharpening distortion than the *Low Pass* filter.
- *Haze Reduction* – This combination of smoothing and sharpening filters provides local contrast enhancement and the removal of aerosol-like distortions in the image.

### 5.1.3 IMAGE OVERVIEW

**[Image Overview]** launches a small dialog with a thumbnail of the active image and a vector graphic that shows the current displayed bounds of the active image.

### 5.1.4 NORTH ARROW, ZOOM INDICATOR, AND GRID LINES

The **[North Arrow]** option turns on/off a graphic depicting the direction to North in the current viewer.

Use **[Grid Lines]** to turn on/off a map-coordinate grid overlay on the active image. The map grid display parameters can be set in the Settings (see

Grid Lines).

The **[Zoom Ratio]** button turns on/off the zoom indicator for the active viewer.

### 5.1.5 CURSOR INFORMATION

**[Cursor Information]** in the *Image* group on the *Home* tab launches a dialog (Figure 20) showing the image (pixel) coordinates of the cursor, in addition to its projected map coordinates. The projection coordinates are relayed based on the projection and display string formats specified in the [Geolocation Formats](#) settings. Images that are chipped from larger sources have two sets of cursor location info; one for the chipped cursor location, and one for where that pixel would lie in the full image.

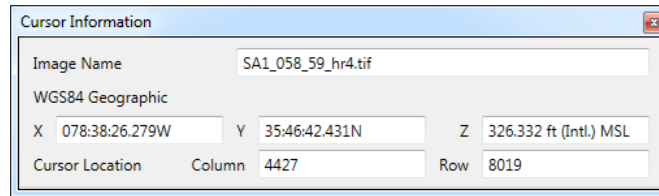


Figure 20. Cursor Information dialog showing both full and chipped image pixel locations.

## 5.2 USER SETTINGS

To change the default settings for a variety of display and measurement operations within the UI, click on **[Settings]** in the Backstage. The *Settings* dialog (Figure 21) allows you to specify how the UI displays certain types of information, including: measurement units, cursor information, display colors, fonts, and other graphics. Unless locked by a Site Administrator (see [Site Administration for Settings](#)), the user settings can be changed to suit the customization desires of each individual user on a given system.

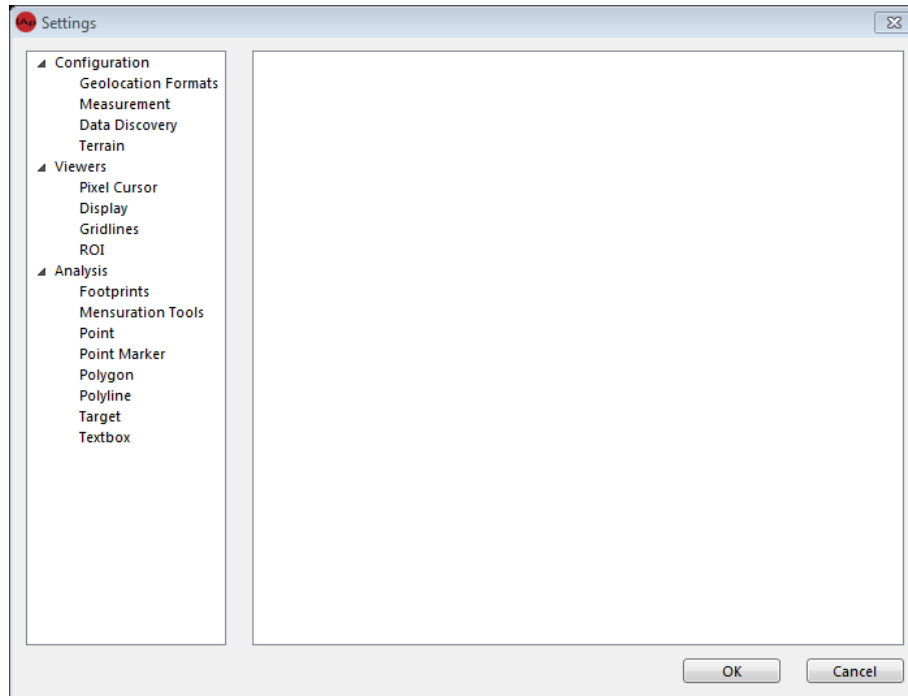


Figure 21. The Settings dialog.

To change a setting, click on the setting type on the left tree and edit the parameters in the right hand side of the dialog. Changes made to the preferences are saved on a per-user basis, allowing all users of a system to configure the look and feel of the software as they see fit.

### 5.2.1 GEOLOCATION FORMATS

The *Geolocation Formats* settings control how map information is displayed and entered (Figure 22).

The *Display Format* controls how map coordinates are relayed to you in areas such as the [Cursor Information](#) dialog. The *Display Format* settings consist of a map projection, a string format, the vertical datum used for reporting elevation, and the units to measure elevation.

- *Projection Type* – Specifies the map projection used. Can be *Native*, *Geographic*, or *UTM*.
  - *Native* – The underlying projection of the source data
  - *Geographic* – Latitude/Longitude
  - *UTM* – UTM zone is defined by projection from the center of the source data’s bounds
- *Geographic String Format* – Specifies the display string format as a decimal combination of degrees (DD), minutes (MM), and seconds(SS). Only used if the *Projection Type* is *Geographic*.
- *Vertical Datum* – Specifies the datum used to display elevation values. Can be *Ellipsoid(WGS84)* or *MSL (EGM96)*. Value supersedes the datum used in the data’s SRS (for display purposes only).
  - *Ellipsoid (WGS84)* – Uses the WGS84 ellipsoid for reporting elevation values.



- *MSL (EGM96)* – Uses the EGM96 geoid for reporting elevation values.
- *Vertical Units* – Specifies the linear units used to report elevation values.

*Input Format* provides the template for user-derived information, such as that provided in the Jump to Location dialog. The input format consists of a map projection and string format.

- *Projection Type* – Specifies the map projection used. Can be *Native*, *Geographic*, or *UTM*.
  - *Native* – The underlying projection of the source data
  - *Geographic* – Latitude/Longitude
  - *UTM* – UTM zone is defined by projection from the center of the source data’s bounds
- *Geographic String Format* – Specifies the display string format as a decimal combination of degrees (DD), minutes (MM), and seconds(SS). Only used if the *Projection Type* is Geographic.

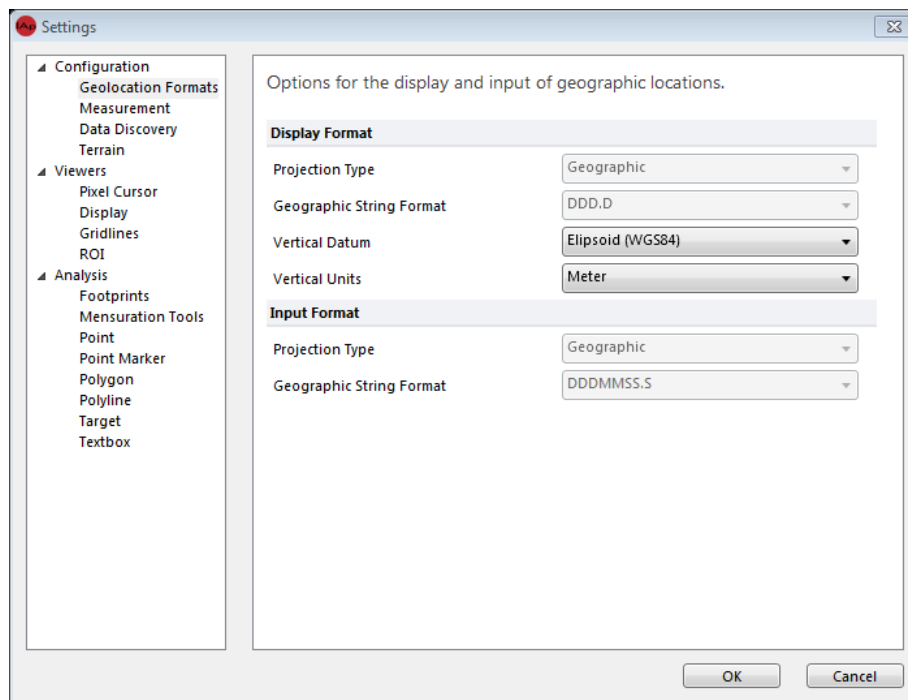


Figure 22. Changing the geolocation format settings.

## 5.2.2 MEASUREMENT

The *Measurement* settings control how all measurements are displayed to you throughout the application (Figure 23). The measurement units can be specified for Length, Area, and Angles.

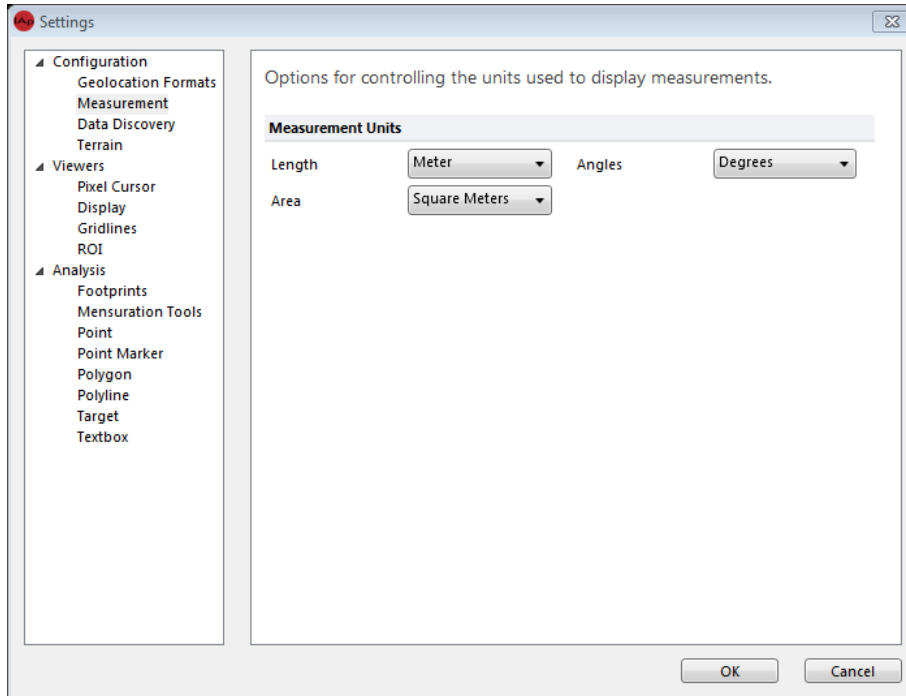


Figure 23. Changing the Measurement settings.

### 5.2.3 DATA DISCOVERY DIRECTORIES

The Data Discovery settings is where you can configure the locations of the source data to use with the Data Discovery Tool (see [Data Discovery](#)).

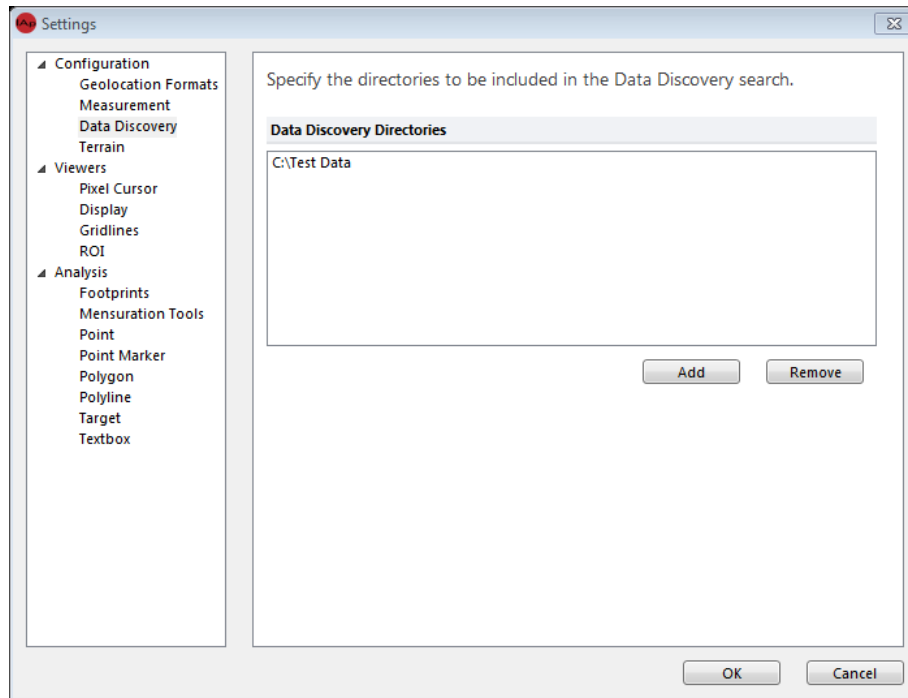


Figure 24. Changing the Data Discovery settings.

### 5.2.4 TERRAIN

The Terrain settings is where you can configure the application to look for DTED files to use as DEM sources (Figure 25). You can specify locations for DTED0, DTED1, or DTED2 DEM files. Use the up and down arrows to set the priority for the elevation files.

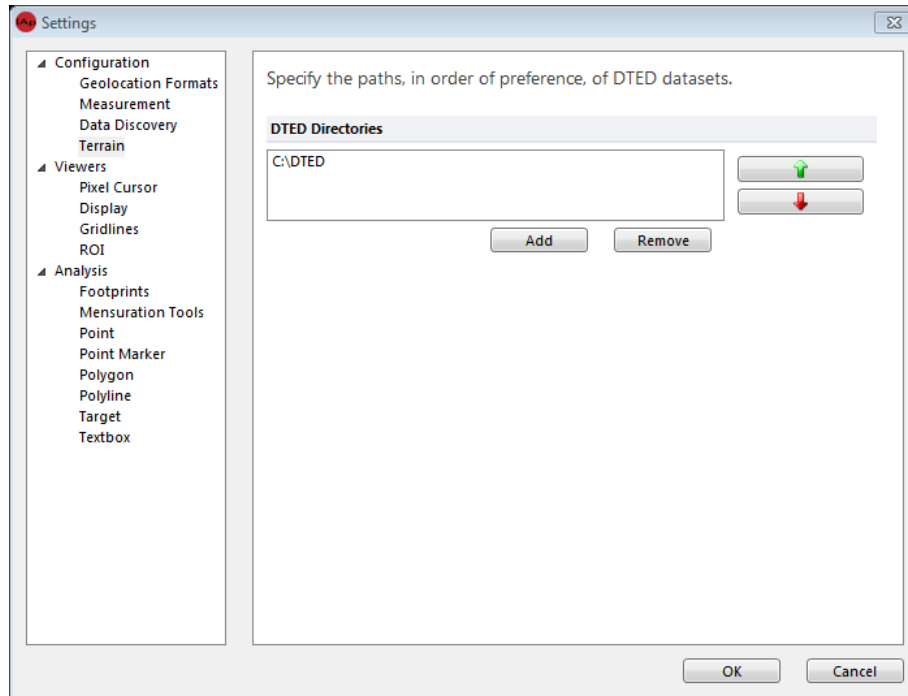


Figure 25. Changing the Terrain settings.

## 5.2.5 PIXEL CURSOR

Use the *Pixel Cursor* properties to specify the look of the measurement cursor (Figure 26). The cursor has an *Inner Color* and an *Outer Color*, as well as a *Size* – *Small*, *Medium*, or *Large*.

Note: For best visibility of the cursor, set the *Inner Color* and *Outer Color* to be highly contrasting.

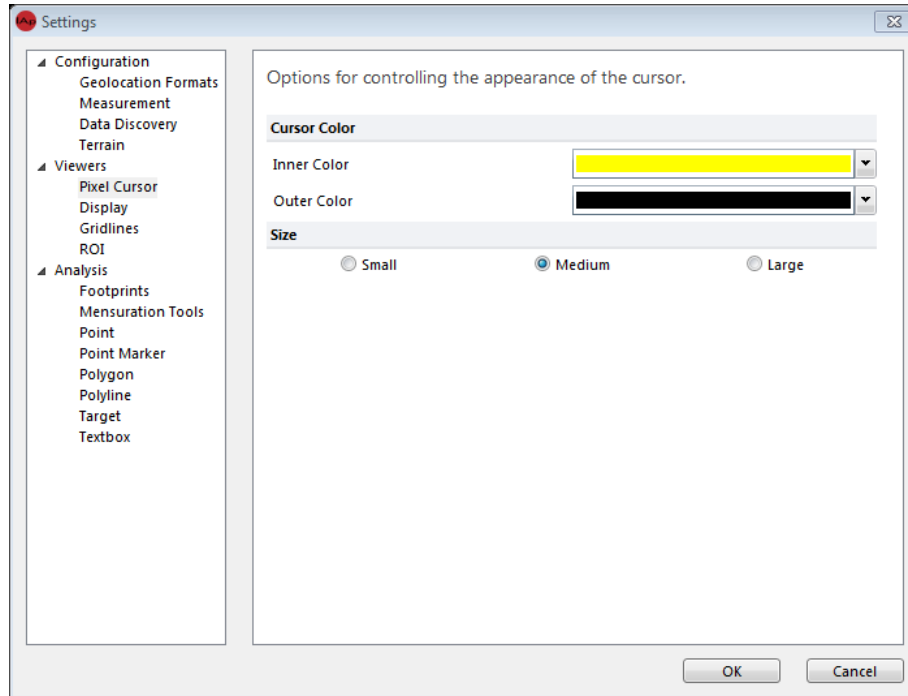


Figure 26. Changing the Pixel Cursor settings.

## 5.2.6 DISPLAY

Use the Display settings to configure default parameters for the viewers (Figure 27). Currently, the only configurable parameter is the *Image Orientation*, which can be set to one of the primary rotation angles in the *Home* tab.

- *Image Up* orients the image such that the columns of the image are aligned with the columns of the viewer.
- *North Up* orients the image in the viewer so that the direction to North – as determined by the spatial reference system – is aligned with the columns of the viewer.
- *Z Up* orients the image so that vertical changes in elevation (such as the vertical lines of tall buildings) are aligned with the columns of the viewer.

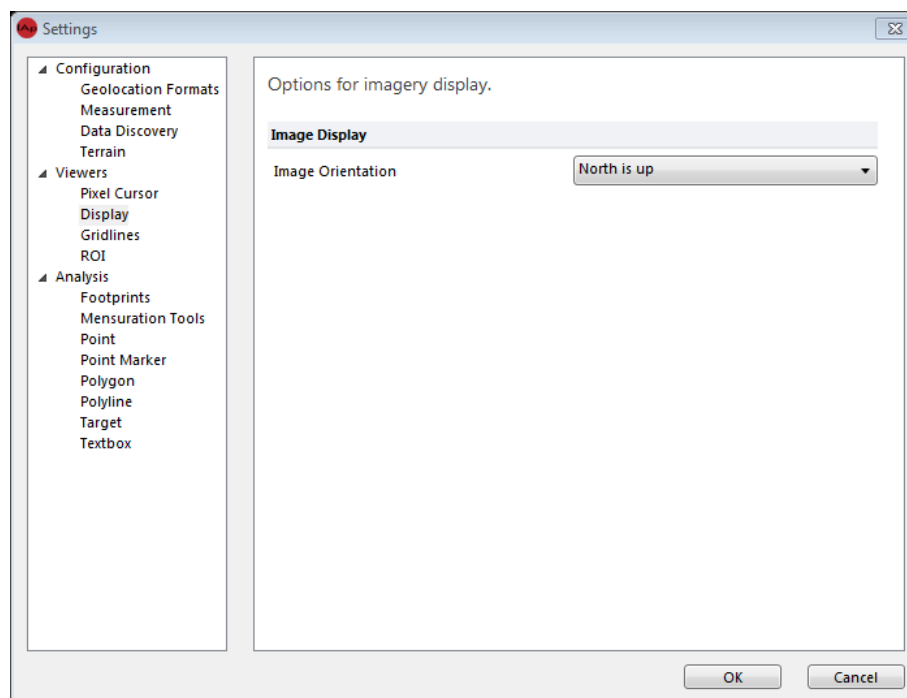


Figure 27. Changing the Display settings.

## 5.2.7 GRID LINES

The appearance of the geospatial grid overlay found on the *Home* tab can be configured through the *Gridlines* settings (Figure 28). The *Line Color* and *Line Style* can be configured, as well as the *Line Weight* and other drawing parameters for the *Major* and *Minor Axis*.

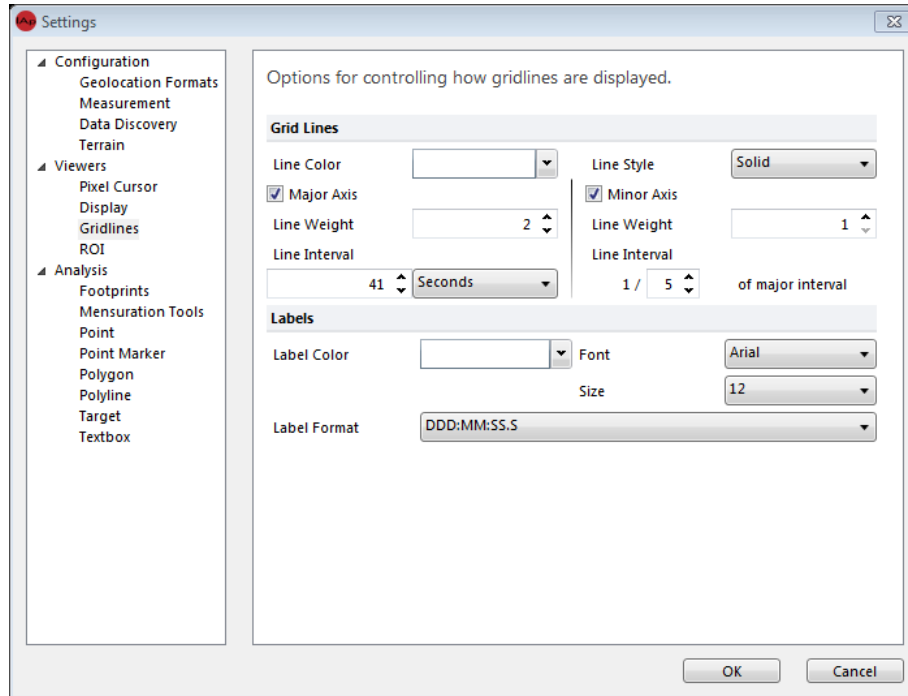


Figure 28. Changing the Gridlines settings.

## 5.2.8 ROI

The *ROI* settings can be used to change the default appearance of the region of interest, as accessed through the *Home* tab (Figure 29). You can specify the *Line Color*, *Line Weight*, and *Line Style* here.

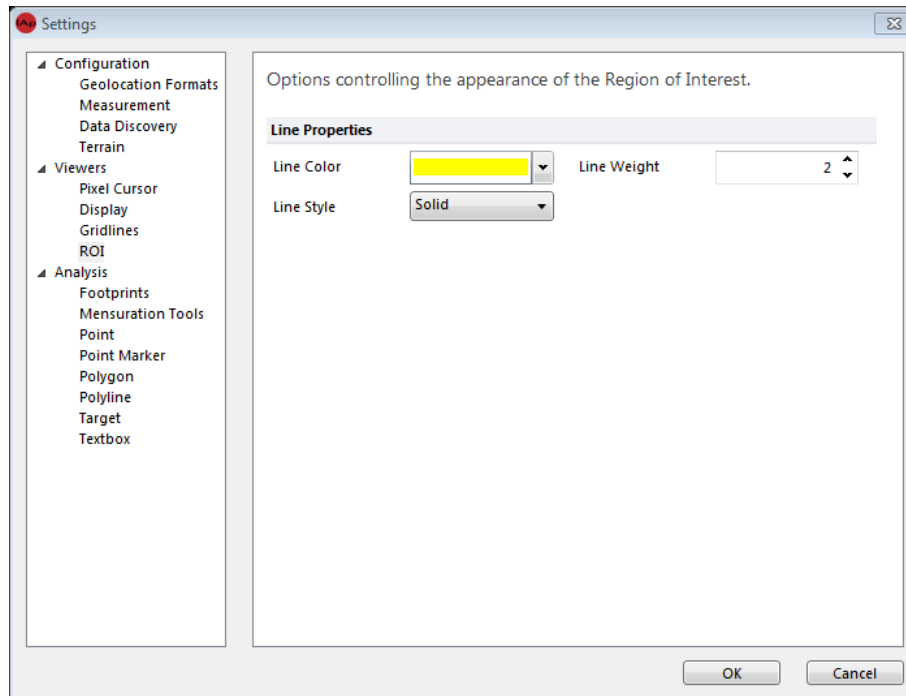


Figure 29. Changing the ROI settings.



## 6 EXPORTING YOUR DATA

IApioneer is capable of exporting a number of data types for easy ingestion into other utilities. Both raster data and vector data can be exported, for a variety of product delivery types.

### 6.1 CROP, RESAMPLE, AND REPROJECT RASTER DATA

The primary mechanism for exporting raster data is the *Crop, Resample, and Reproject* dialog (Figure 30). This dialog is accessed from the Backstage by right-clicking on the raster image that you wish to export and selecting the “*Crop, Resample, and Reproject*” option.

The *Crop, Resample, and Reproject* dialog allows the user to chip a sub-image from the original raster data. The bounds of the chipping process can be set to pixel values, either by click-dragging a highlighted rectangle in the image thumbnail, or by specifying the pixel locations in the dialog itself.

Alternatively, the user can crop the image based on geospatial coordinates by selecting [**Use Geospatial Coordinates**]. From that dialog (Figure 31), the user can specify the *Spatial Reference System* used as the base map projection, and the bounding coordinates of the sub-image.

A third option is to define the sub-image boundaries from another geospatial data item, by clicking [**From Other Data**]. The *Geospatial Data Selection* dialog allows the user to select another data item as the basis for the chip boundaries, as well as a buffer around that data, if desired.

Checking the *Resample* box allows you to specify the nominal GSD (spatial resolution) of the output image. Here you can specify the Resolution and Linear Units.

You can change the output spatial reference system for Orthographic sensor models only by selecting the *Reproject* checkbox and setting the output spatial reference system. This changes the base map projection for the output sub-image

Once the chipping parameters have been specified, selecting the *Filename* and output format for the sub-image is the final step. Pressing [**OK**] kicks off the chipping process. When complete, the generated sub-image will be added to the current session.

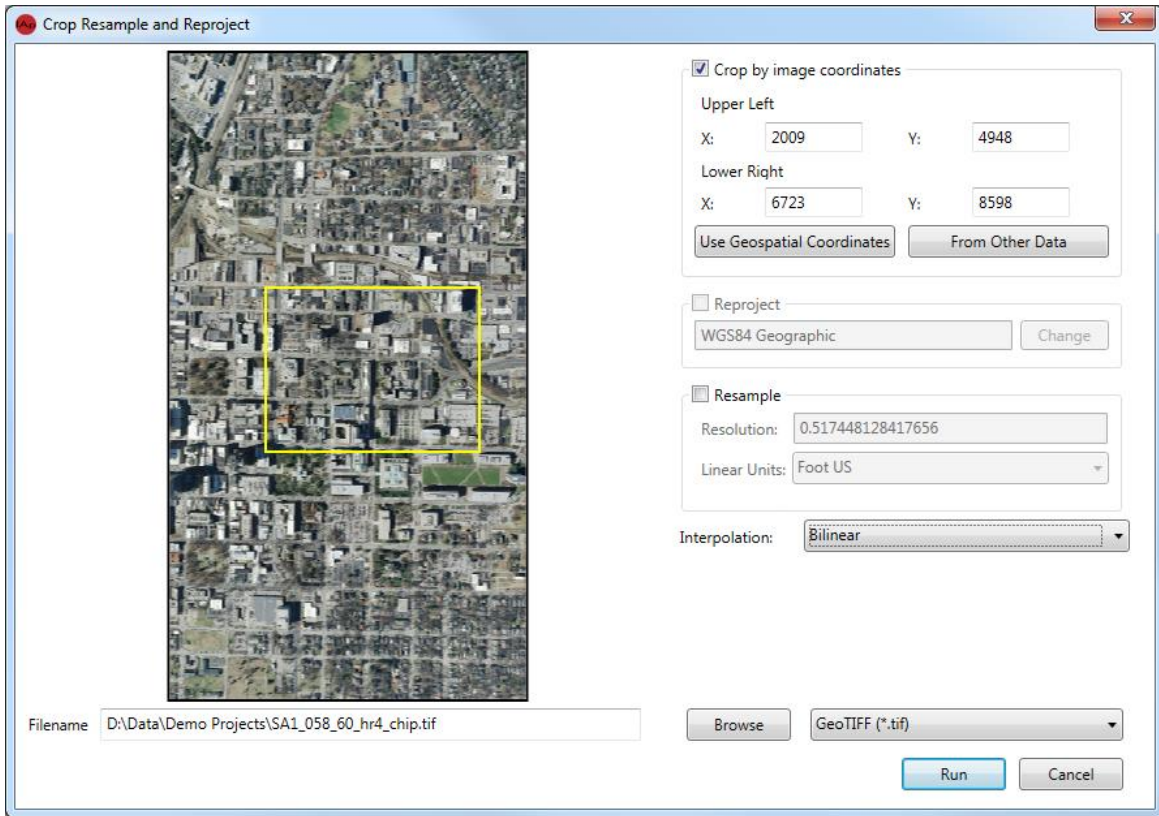


Figure 30. The Crop, Resample, and Reproject dialog allows you to export sub-images.

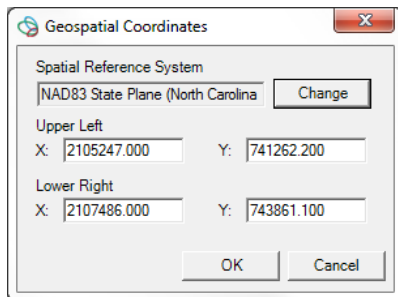


Figure 31. Select chip boundaries from geospatial coordinates.

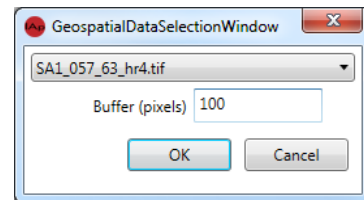


Figure 32. Select chip boundaries from another data item.

## 6.2 RASTER DATA TYPE CONVERSION

Raster data can be converted from one data type (float, int, etc.) to another. This is accomplished by right-clicking on the raster data item in the Session section of the Backstage and choosing “*Data Conversion*”. Data conversion allows you to convert raster data from one *Data Type* (Byte, Short, Unsigned Short, Int, Unsigned Int, Float, Double) to another, as seen in Figure 33. This is a batch process, meaning that multiple images can be processed at a time by selecting them in the Backstage and launching the dialog on the group. The user selects the output *Data Type* and *File Format* from the dropdown boxes, the output filename – or output directory plus suffix for multiple images – and kicks off the conversion process by selecting **[Run]**. Once the process is complete, the generated items will be added to the current session.

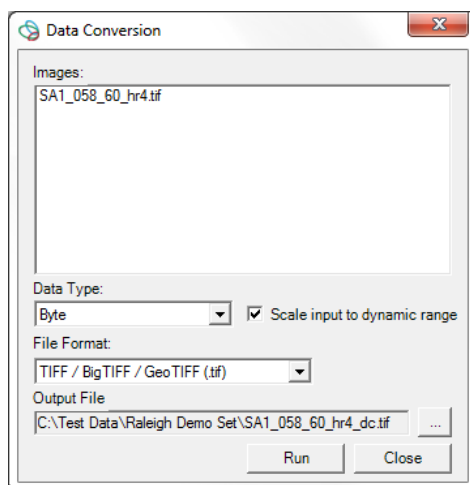


Figure 33. The Data Conversion dialog allows the user to convert from one data type to another.

## 6.3 EXPORT RASTER DATA

Right-clicking on a single (or multiple) raster item(s) in the Backstage and selecting the “*Export*” option will launch the *Export Images* dialog (Figure 34). Here, you can export the selected images as they are, changing only the *File Format*, as desired. This is another batch operation dialog, where multiple images can be processed at a time by selecting them in the Backstage and launching the dialog on the group. The user selects the output *File Format* from the dropdown boxes, the *Output Filename* – or *Output Path* plus *Suffix* for multiple images – and kicks off the conversion process by selecting **[Run]**. Exporting imagery is typically only used to convert file formats for use in other applications, but the user can choose to add the generated items to the current session by selecting the *Add Results to Project* checkbox.

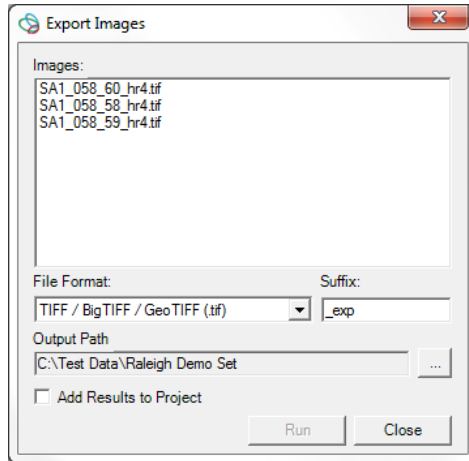


Figure 34. The Export Images dialog provides the ability to export an image in a different file format.

## 6.4 REGION OF INTEREST AND IMAGE CHIPPING FROM VIEWERS

Often, you want to indicate a working area, or deliver a portion of the image identified in the active viewer. This can be an actual image chip, or simply a JPEG graphic to use for a briefing. IApioneer provides several mechanisms for identifying ROIs and using them in production scenarios.

### 6.4.1 REGION OF INTEREST

You can specify a ROI from the Home tab by clicking the **[Region of Interest]** gallery and choosing “Set *Region of Interest*”. This allows you to rubber band select (click and drag) a ROI in the active viewer. The ROI can be hidden (or shown again, once hidden) by clicking on the **[Region of Interest]** button itself. The appearance of the ROI is controlled via the ROI settings (see [Customizing the View, User Settings, ROI](#)).

The ROI can be used in product delivery to designate a working region, or for image chipping.

### 6.4.2 IMAGE CHIPPING

The Image Chip functionality in the Image group of the Home tab provides a shortcut to the Crop, Resample, and Reproject dialog (see [Crop, Resample](#), and [Reproject Raster Data](#)), with the crop boundaries pre-set to either the current view, or to the current ROI.

You can chip the image in the active Viewer to the bounds of the current ROI by clicking on the **[Image Chip]** gallery, and selecting “Chip from ROI”. The *Crop, Resample, and Reproject* dialog will be launched, with the bounding image coordinate pre-set to align with the current ROI.

Likewise, selecting “Full Screen Chip” from the **[Image Chip]** gallery launches the *Crop, Resample, and Reproject* dialog with the bounding image coordinates pre-set to align with the current viewing bounds of the active Viewer.

### 6.4.3 SCREEN CAPTURE

You can save the active Viewer (and its contents) by selecting the **[Screen Capture]** option in the *Image* group of the *Home* tab. The screen capture mechanism stores all of the visible information in the active Viewer for ingestion into other products, such as a PowerPoint briefing.

The “*Save Screen to File*” option from the gallery copies the active viewer’s contents to a flat image file, such as a JPG, PNG, BMP, or similar.

“*Save Screen to PowerPoint*” copies the active viewer’s contents to the clipboard, and then opens a new PowerPoint presentation, pasting the viewer’s contents into the new presentation. This mechanism requires Microsoft PowerPoint 2007 or newer to be installed on the system.

“*Copy Screen to Clipboard*” sends the contents of the active viewer to the system clipboard, where it can be pasted into other applications for product generation.

The “*Copy ROI to Clipboard*” option copies only the contents of the active ROI to the system clipboard.

## 6.5 EXPORTING VECTOR DATA

Vector data can be exported in a variety of formats for archival and ingestion into other data processing packages. Go to the Backstage and right-click on the vector data item you wish to export. Choose the “*Export*” option to launch the vector *Export* dialog.

The *Export* dialog allows the user to export the selected vector file, with options for output format, projection, texturing, and more (Figure 35). The *Output Format* parameter includes the most common geospatial 2D and 3D file formats, including:

- GeoVector (IAVO proprietary)
- ESRI Shapefile
- Presagis OpenFlight
- Collada
- KML/KMZ
- Wavefront OBJ
- PLY
- XYZ point set
- Common Data Base (CDB)

The *Reproject Data* checkbox is used to convert the vector file’s spatial reference system from the original to one of your choosing. Click **[Change]** to specify the output spatial reference system.

Output formats that include texture information can have automatic texturing applied to the data by checking the *Include Textures* checkbox. With that option checked, click **[Change]** to specify which

images will be used to automatically texture the data. The automatic texturing process takes into account camera look angle, spatial resolution, and occlusions to identify the best texture patches for every polygon in the dataset.

Complete the operation by selecting the *Output Filename* and pressing **[Export]**.

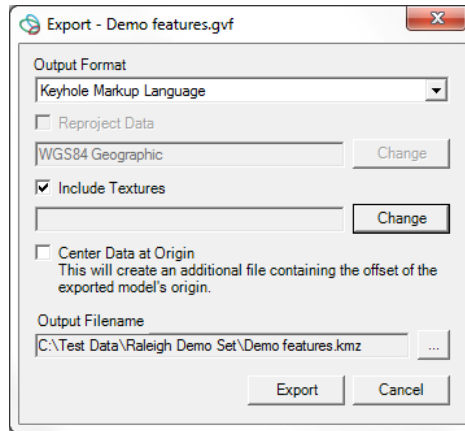


Figure 35. The Vector Export dialog allows the user to export 2D and 3D vector data in a variety of formats.

### 6.5.1 EXPORTING MULTIPLE VECTOR FILES AS A SINGLE KMZ

Often, 3D site models are developed in parts by multiple members of a modeling team. These parts are typically stored in separate files for editing and display, but need to be exported into a single file for distribution. Multiple 3D vector models can be exported into a single KMZ file by selecting two or more vectors in the backstage, then right-clicking and following the export process for KMZ files detailed above.

## 7 IAPIONEER ANALYSIS

### 7.1 WHAT IS IAPIONEER ANALYSIS?

IApioneer Analysis is a module of the IApioneer family of geospatial processing applications. It is used for imagery exploration, exploitation, analysis, and annotation. Specifically, the Analysis module is focused on product annotation and delivery, allowing the user to generate annotated products that can be delivered in the form of PowerPoint briefings, chipped datasets, and other single-layer export process. These annotation overlays can be saved and distributed as viewable layers to anyone with IApioneer.

IApioneer Analysis offers the capability to:

- Annotate imagery with text boxes, point markers, and simple geometry
- Measure length, area, and azimuth values with a few mouse clicks
- Capture screenshots of annotated products
- Save annotations for future use and distribution to other IApioneer users
- Use intuitive drawing mechanisms to develop sophisticated products

### 7.2 ANNOTATION LAYER MANAGEMENT

Annotation Layers are individual documents within IApioneer, and are listed in the *Session* section of the Backstage, under the *Annotations* heading. From the Backstage, Annotation Layers can be created, saved, and loaded. New Annotation Layers can also be created directly from the *Home* tab of the ribbon, or from the Data Layer Manager.

When working with Annotation Layer data, use the Data Layer Manager to specify the active Annotation Layer for editing and viewing.

#### 7.2.1 CREATING AN ANNOTATION LAYER

Click **[Add Annotation Layer]** in the *Session* section of the Backstage to create a new annotation layer. The new Annotation Layer will be added to the session as an Unnamed Annotation Document, ready for editing or saving. To change the Annotation Layer's name, save it (see [Saving Vector Layers](#)). The new filename will become the Annotation Layer's display name.

Alternatively, Annotation Layers can be created directly from the Home tab of the Ribbon. Click on the **[Add Layer]** dropdown and choose the *Add Annotation Layer* option. The same mechanism is in place in the Layer Manager.

Whichever method is used to create an annotation layer, the new layer is set as the active layer for immediate editing.

## 7.2.2 SAVING ANNOTATION LAYERS

Right click on an Annotation Layer in the Backstage and choose “Save Data” or “Save Data As” to save the Annotation Layer for future processing. The file will be saved in a \*.gad format, which is an XML-based IAVO internal file format.

- Save Data – Allows you to store the Annotation Layer. If there is no file currently associated (i.e., a new Annotation Layer) you will be prompted to provide a filename. That filename will become the name of the Annotation Layer.
- Save Data As – To prevent you from overwriting the original document, the Save Data As command stores the current Annotation Layer in a new document.

## 7.2.3 LOADING ANNOTATION LAYERS INTO THE SESSION

Ingestion of Annotation Layers is the same as ingestion of raster data (or any other data type). Use the **[Load Data]** option in the Backstage, and point the file dialog to the annotation data file(s) you wish to load.

## 7.3 EDITING AN ANNOTATION LAYER

With IApioneer, you can edit Annotation Layers, as well as create and view them. Although annotations are typically drawn on a reference image, they are anchored geospatially, and thus can propagate across multiple images. It is important to note that unless the data is perfectly registered, annotations drawn on one reference image may be slightly off (visibly) when overlaid on any other image.

### 7.3.1 ANNOTATION VISIBILITY AND SETTING THE ACTIVE LAYER

The first step in editing an Annotation Layer is the set it as both visible, and the active layer for editing, using the Layer Manager. Figure 36 shows the IApioneer module with the Data Layer Manager visible and a single Annotation Layer ready for editing. Clicking on **[Layer Manager]** in the *Data Layers* group on the *Home* tab expands the Data Layer Manager if it is not currently displayed, and hides the Data Layer Manager if it is already visible. You can also click on the button of the divider between the Left Viewer and the Data Layer Manager to show/hide the Data Layer Manager. The Data Layer Manager can be resized by clicking and dragging on the divider.

Each Annotation Layer in the Layer Manager has a checkbox and a radio button to the right of its name. The checkbox indicates visibility – checked means that the layer is visible in the Viewers. The radio button indicates the active (editable) layer. Module tabs appear in the ribbon, based on the type of the active layer. When the active layer is an Annotation Layer, the *Analysis* module tab appears in the Ribbon.



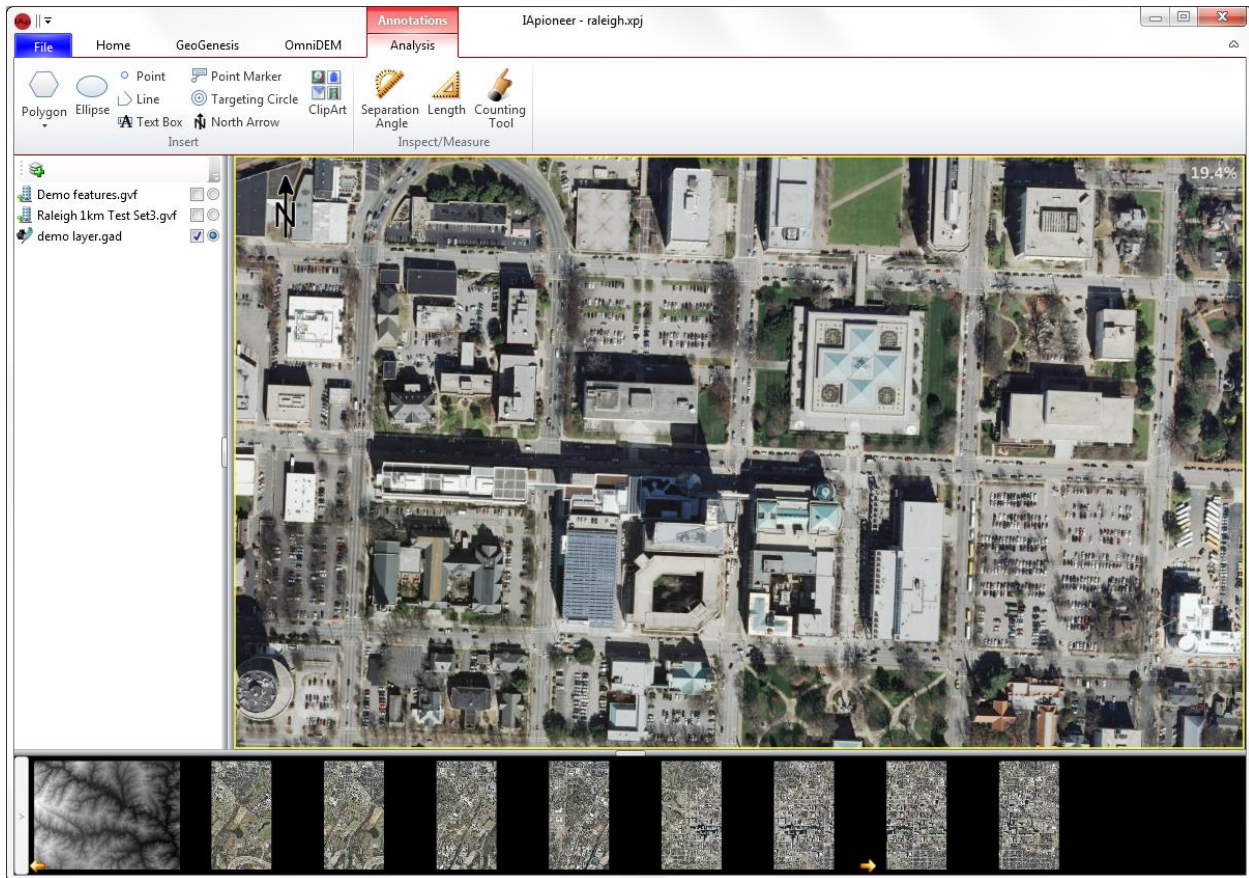


Figure 36. IA Pioneer Analysis module with an Annotation Layer loaded.

### 7.3.2 ADDING SHAPES AND CLIPART

The Analysis tab contains two groups of tools for annotations and measurements. The *Insert* group allows you to insert single shapes and MIL-STD-2525B clip art. The types of shapes supported include basic shapes – points, lines, and polygons – as well as complex items such as text boxes, point markers, and target rings. Initial parameters for the appearance of the annotation objects are pulled from the defaults settings (see [IA Pioneer Analysis User Settings](#) IA Pioneer Analysis User Settings).

The drawing objects in the IA Pioneer Analysis toolset are modal in nature. Once the drawing object mode has been selected (e.g., Polygon), new objects can be repeatedly drawn by holding the CTRL button and left clicking to start the new object. The object can then be drawn as detailed below.

**Polygon** – Select “Polygon” from the [Polygon] drop down. Click on the image in the location of the first point of the polygon. Continue clicking to set the vertices of the polygon. The last selected point will always be attached to the first point, closing the polygon. Once the last vertex has been placed, right-click to finish drawing.

**Rectangle** – Select “*Rectangle*” from the **[Polygon]** drop down. Click on the image in the location of the upper left corner of the rectangle and drag the cursor to define the rectangle. Release the left mouse button to finalize the shape.

**Ellipse** – Select **[Ellipse]**. Click on the image in the location of the upper left corner of the ellipse’s bounding box and drag the cursor to define the ellipse. Release the left mouse button to finalize the shape.

**Point** – Select **[Point]**. Click on the image in the location of the point to draw the shape.

**Polyline** – Select **[Line]**. Click on the image in the location of the first point of the polyline. Continue clicking to set the vertices of the polyline. Once the last vertex has been placed, right-click to finish drawing.

**Text Box** – Select **[Text Box]**. Click on the image in the location of the center point of the text box. A text box will be placed in the image and the text highlighted for easy text entry. Click outside of the text box to finalize the annotation.

**Point Marker** – Select **[Point Marker]**. Click on the image in the location of the point marker to draw the shape. A small circle will be drawn, indicating the location of the point. In addition, a text box will be drawn attached to the point, indicating the geospatial coordinates of the point marker.

**Targeting Circle** – Select **[Targeting Circle]**. Click on the image in the location of the point to draw the shape. A set of target rings will be drawn around the selected point, along with a text box indicating the geospatial coordinates of the center of the target rings.

**North Arrow** – Select **[North Arrow]**. Click on the image in the location of the point to draw the shape. Unlike other clip art-style graphics, which maintain their orientation with respect to the viewer as the image is rotated – the North Arrow graphic always indicates the direction of True North for images with the appropriate support data.

**Clip Art** – Clip art can be added as graphic annotations to the image through the use of the Clip Art dialog. Click on **[ClipArt]** to launch the dialog. (Note: Currently, IA Pioneer only supports the Warfighting symbols from the MIL-STD 2525B graphics objects.)

To place a graphics object from the library of images, navigate the tree structure to find the desired graphic. As the tree is navigated, the contents of the library folders are previewed in the graphic pane to the right. When the desired graphic has been found, click on the preview icon in the right pane and drag the icon into the image viewer. Release the left mouse button to drop the graphic into the viewer, centered at the point of release.

**Note:** The Clip Art dialog is a persistent dialog, that defers to the primary application for window placement. If you click on the Clip Art button and the dialog does not launch, check to see if it is open “behind” the application.

### 7.3.3 ADDING LINEAR AND ANGULAR MENSURATION ANNOTATIONS

The *Inspect/Measure* group of the *IApioneer* tab provides tools for linear and angular measurement. Initial parameters for the appearance of the annotation objects are pulled from the defaults settings (see *IApioneer Analysis User Settings*).

**Separation Angle** – Click [**Separation Angle**] to begin measuring an angle in the image. Begin by clicking on an endpoint of the angle. Then, click the pivot vertex of the angle, and finish by clicking on the other angle endpoint. As the cursor moves to the final position, the angle measurement between the first line segment and the one joining the pivot point to the cursor is continually displayed, allowing the user to view a number of angle measurements before finally selecting the last point.

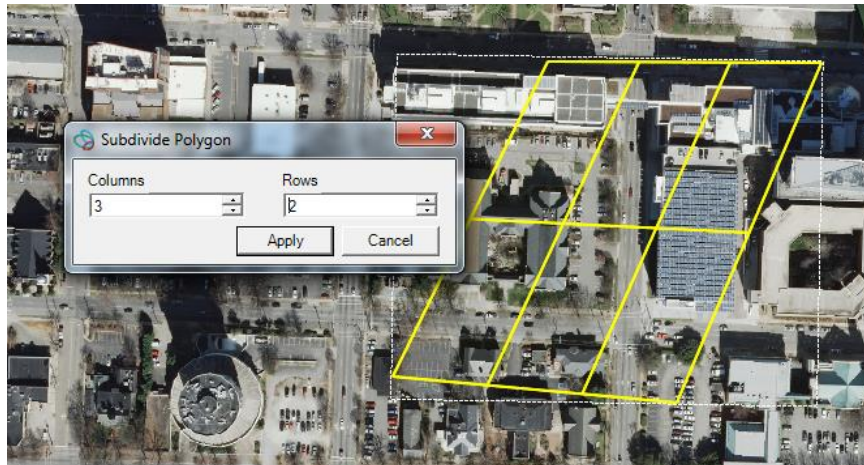
**Length** – Click [**Length**] to begin measuring a length in the image. Begin by clicking on the starting point of the line segment and finish by clicking on the endpoint. As the cursor moves to the final position, the length measurement is continually displayed, along with the change in elevation, allowing the user to view a number of length measurements before finally selecting the last point.

### 7.3.4 EDITING ANNOTATIONS

IApioneer provides a limited capability to edit annotations once they have been initially drawn. Most of the annotation objects can be moved by clicking anywhere on the annotation and dragging it to its new location. The exceptions are Point Markers and Target Circles, which only allow their text boxes to be moved.

To edit the vertices of a polygon, once placed, right click on the selected polygon and choose “*Edit Points*”. Click and drag a highlighted vertex to move it. When the editing is complete, double click outside of the selection to finalize the new geometry.

It is possible to subdivide any convex polygon with four sides (convex quadrilateral), into regularly sampled subregions by right-clicking on the polygon and choosing “*Subdivide*”. The *Subdivide Polygon* dialog allows you to specify the number of *Rows* and *Columns* of the subdivision, dynamically updating the annotation in the Viewer to provide immediate feedback on the final appearance. Pressing [Apply] deletes the original annotation and replaces it with the subdivisions, each as a separate annotation object. The subdivision annotations’ properties are copied from the parent annotation.



**Figure 37. Polygon annotation subdivision.**

### **7.3.5 EDITING THE TEXT IN A TEXT BOX**

Double click inside any text box annotation (or the text box of a complex annotation object) to edit the text. Type the new text, including carriage returns, and click outside the text box to finalize the changes.

### **7.3.6 VIEWING AND EDITING ANNOTATION PROPERTIES**

Each annotation object has a set of properties that contain appearance parameters for its geometry and textboxes, as well as mensuration information. Some annotations may contain one, two, or even all three of these sets of parameters. Default parameters for each of these parameters are pulled from the Settings, but you can change these properties for individual annotations. These properties can be accessed by right-clicking on the annotation and choosing the “*Properties*” option.

### 7.3.6.1 MENSURATION PROPERTIES

The *Details* tab in the *Annotation Properties* dialog gives you metrics about the selected annotation. These include *Area*, *Perimeter*, and *Centroid* information. The units used for reporting here are drawn from the *Measurement* default settings. Figure 38 shows an example of the mensuration properties for a polygon annotation.

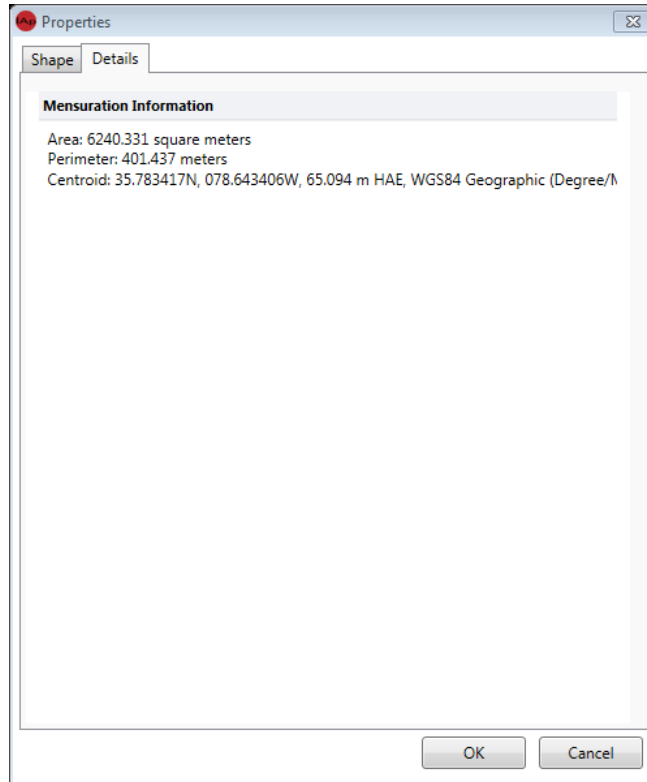


Figure 38. The Mensuration properties of a polygon annotation.

## 7.4 IAPIONEER ANALYSIS USER SETTINGS

To change the default settings for the annotation objects in IApioneer, click on **[Settings]** in the Backstage. The *Analysis* group in the *Settings* dialog is where the defaults for each of the annotation objects reside.

To change a setting, click on the setting type on the left tree and edit the parameters in the right hand side of the dialog. Unless locked by a Site Administrator (see [Site Administration for Settings](#)), the user settings can be changed to suit the customization desires of each individual user on a given system.

### 7.4.1 FOOTPRINTS

The Footprints settings control how DPPDB footprints are displayed in the viewer (Figure 39). You can specify the *Line Color*, *Line Style*, and *Line Weight* for both the *Controlled Footprint* and the *Uncontrolled Footprint* of a DPPDB segment.

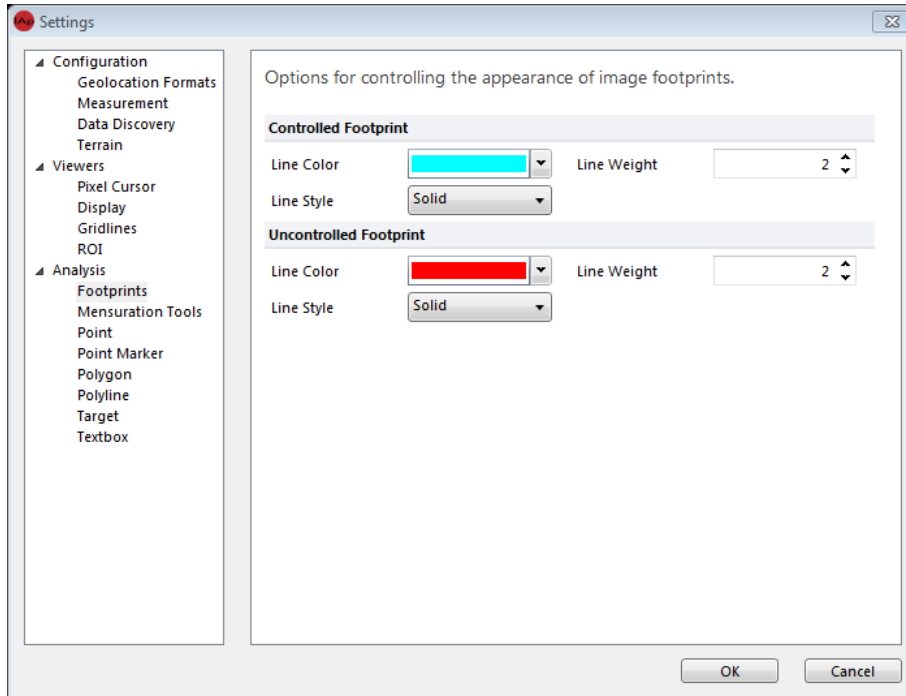


Figure 39. Changing the Footprints settings.

## 7.4.2 MENSURATION TOOLS

The Mensuration Tools settings control how mensuration annotations appear (**Figure 40**). You can specify the default look and feel of the mensuration tools by specifying the *Font* parameters and *Effects*, as well as the *Foreground* and *Background* colors for the text. You can also specify the *Line Properties* of the mensuration vector components.

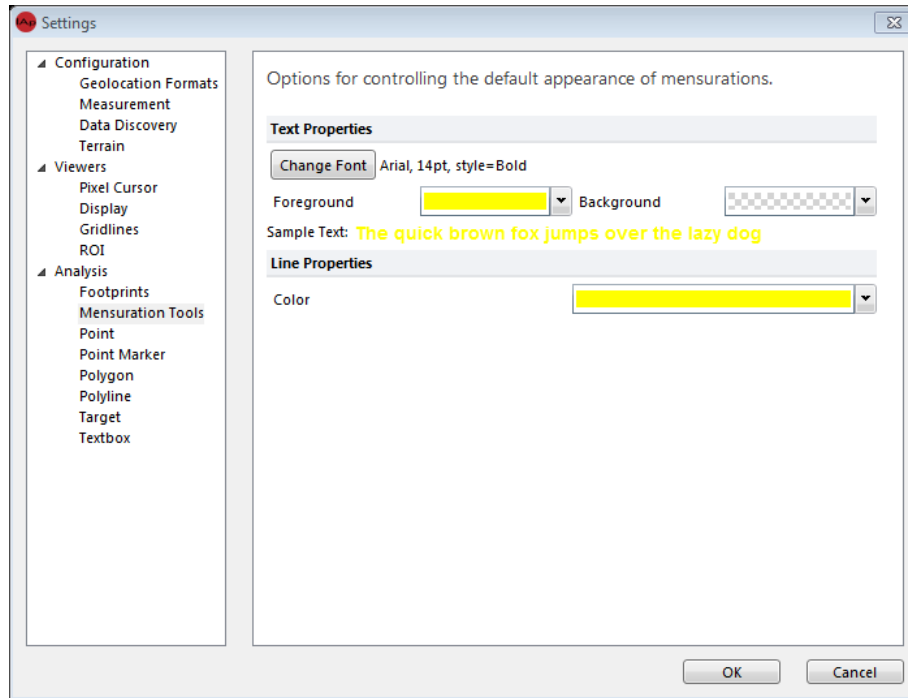


Figure 40. Changing the Mensuration Tools settings.



### 7.4.3 Point

The Point settings control how point annotations appear (Figure 41). You can specify the default *Color*, *Weight*, and *Style* for the Point annotation.

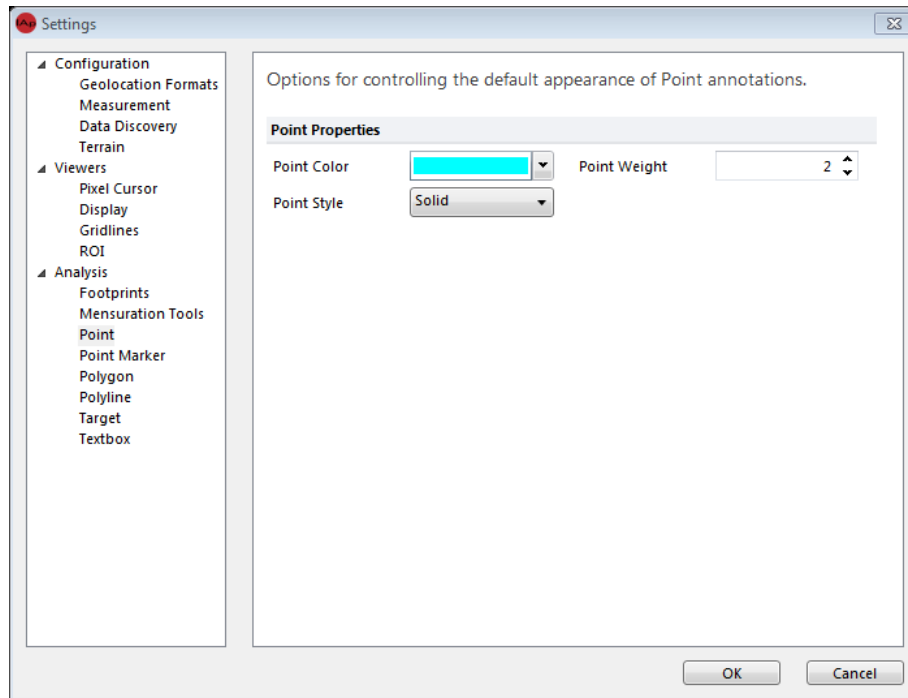


Figure 41. Changing the Point annotation settings.



#### 7.4.4 Point Marker

The Point Marker settings control how the point vector appears (Figure 42) for the point marker annotation. You can specify the default *Color*, *Weight*, and *Style* for the marker annotation. You can also specify the *Font* parameters and *Effects*, as well as the *Foreground* and *Background* colors for the text.

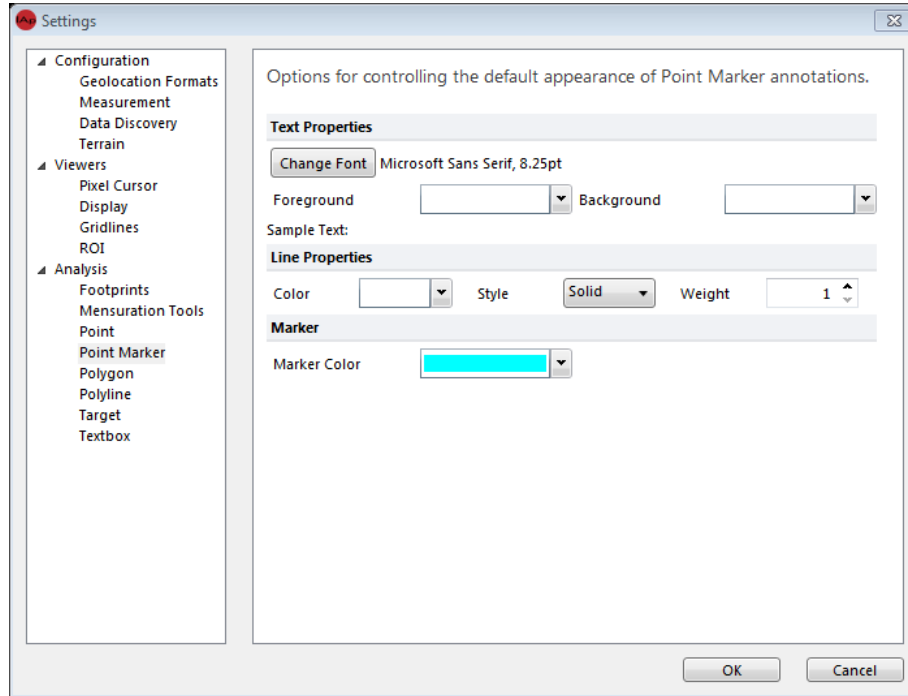


Figure 42. Changing the Point Marker annotation settings.

## 7.4.5 Polygon

The Polygon settings control how polygon annotations appear (Figure 40). You can specify the default look and feel of the polygon annotations by specifying the *Line Properties* of the vector components. Alternating, or candy-cane, colors can be specified in the *Line Style* options. You can also specify whether the *Show Endpoint Direction* and *Show Centroid* parameters are initially checked. The *Fill Color* can also be specified here.

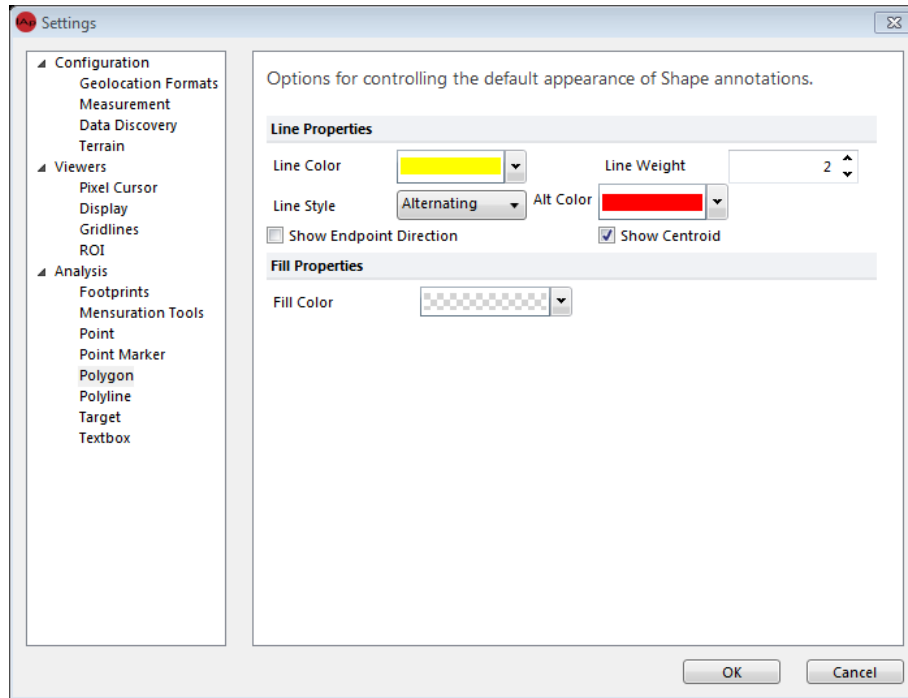


Figure 43. Changing the Polygon annotation settings.

## 7.4.6 Polyline

The Polyline settings control how polygon annotations appear (Figure 44). You can specify the default look and feel of the polyline annotations by specifying the *Line Properties* of the vector components. You can also specify whether *Show Endpoint Direction* is initially checked.

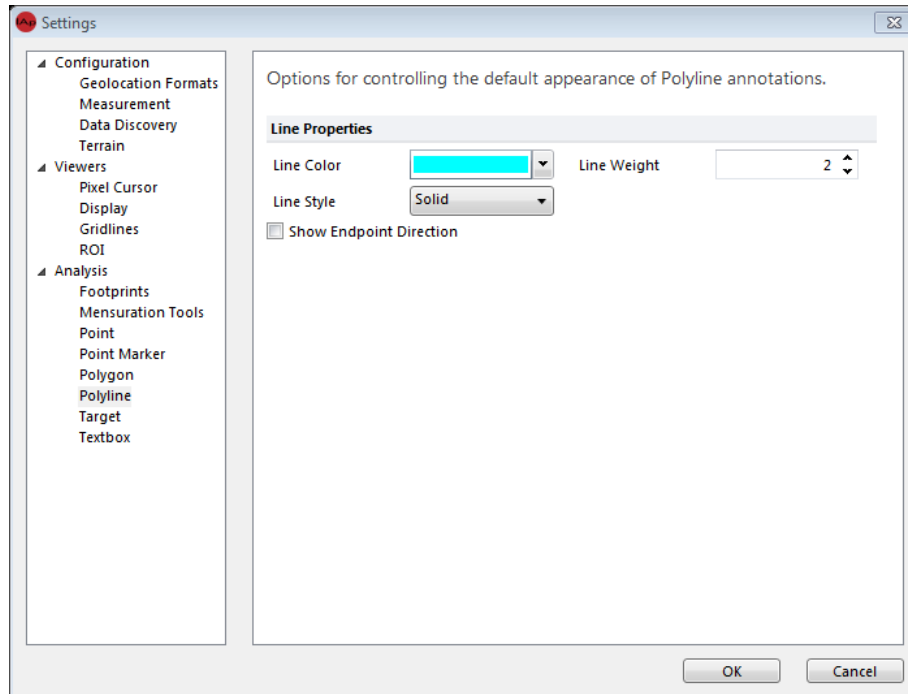


Figure 44. Changing the Polyline annotation settings.

### 7.4.7 Target

The Target settings control how target circle annotations are initially constructed (Figure 45). You can specify the Marker Color for the annotation object delineating the center of the target annotation. Here, you can also specify parameters for the default rings, including the *Damage Ring Units*, and the initial *Radius* and *Colors* for the ring annotations. You can also specify the *Font* parameters and *Effects*, as well as the *Foreground* and *Background* colors for the text.

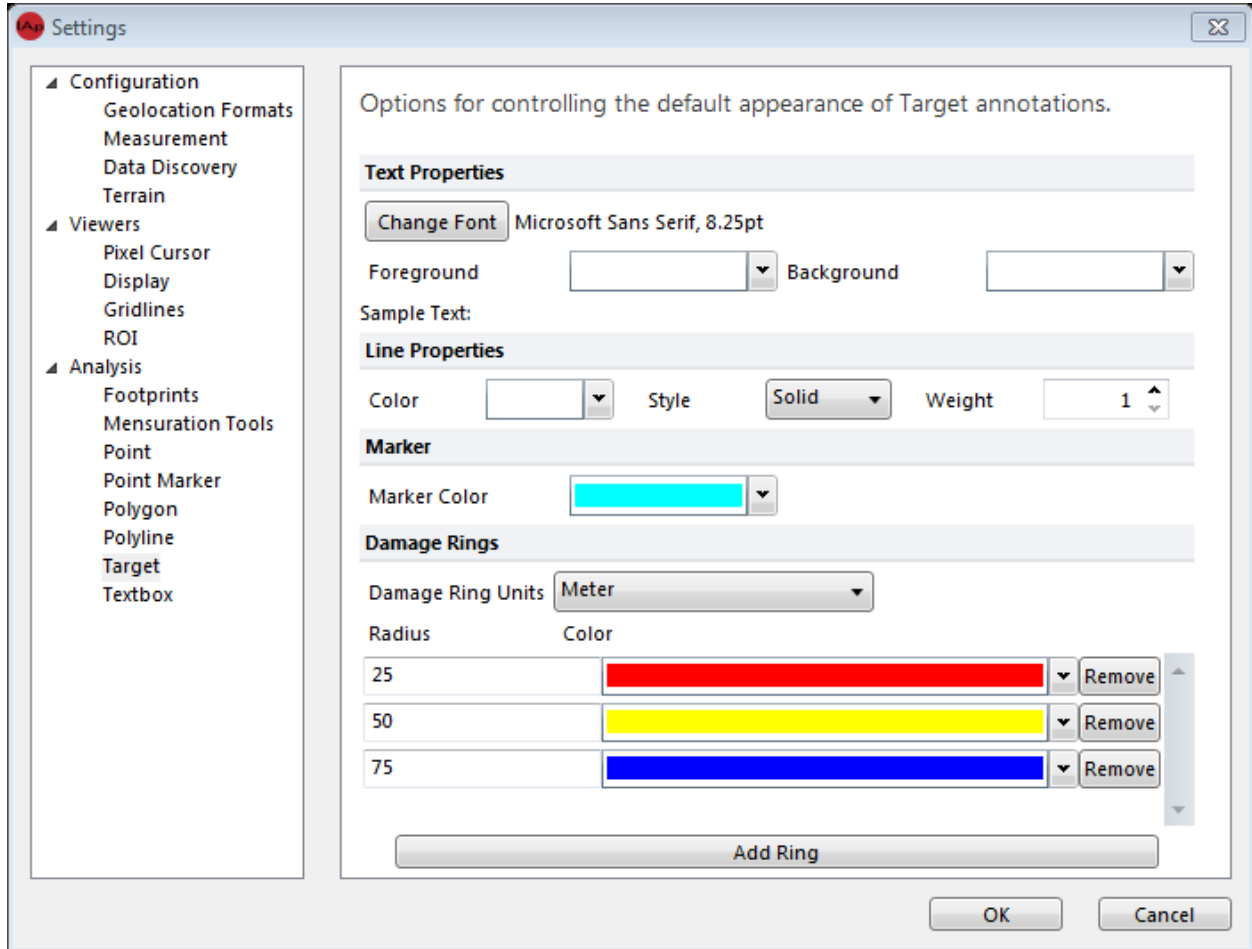


Figure 45. Changing the Target annotation settings.

## 7.4.8 Textbox

The Textbox settings (Figure 46) control the *Font*, *Effects*, and *Color* parameters for both standalone textbox annotations, as well as textboxes that appear as a component in complex annotations (e.g., point markers, target rings). The *Line Properties* are used for both the textbox border, as well as any necessary callout lines for complex annotations.

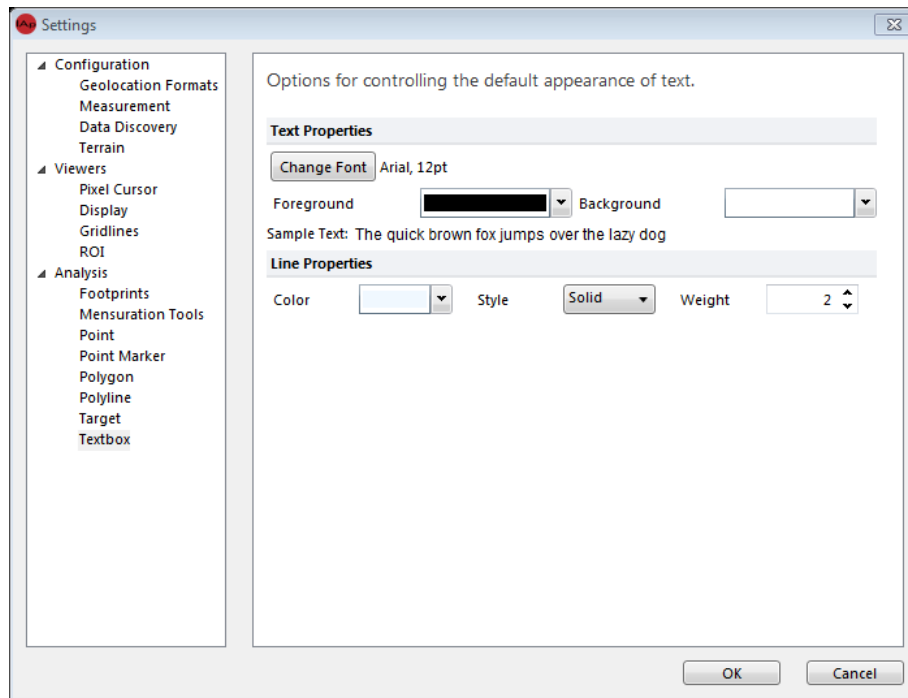


Figure 46. Changing the Textbox annotation settings.

## 8 FEATUREXTRACT

### 8.1 WHAT IS FEATUREXTRACT?

FeatureXtract is a module of the IApioneer family of geospatial processing tools. It is used for 2D and 3D modeling and feature extraction, with simplified tools for identifying features in overlapping 2D images and modeling them in 3D space. All you need is two or more overlapping images, with support data, to easily extract points, edges, and polygons to create accurate 3D scenes of roads, buildings, and more.

FeatureXtract offers the capability to:

- Perform geospatially accurate 3D modeling from overlapping satellite and aerial imagery
- Streamline the feature extraction process through draw and match technology
- Rapidly extract 3D buildings and roads
- Export feature layers for use in GIS applications
- Export textured features to Presagis, Google Earth for use in visual simulation applications or editing
- Automatically texture map the extracted scenes

### 8.2 VECTOR LAYER MANAGEMENT

Vector Layers are individual documents within FeatureXtract, and are listed in the *Session* section of the Backstage, under the *Vectors* heading. From the Backstage, Vector Layers can be created, saved, and loaded.

When working with Vector Layer data, use the Data Layer Manager to specify the active Vector Layer for editing and viewing.

#### 8.2.1 CREATING A VECTOR LAYER

Click **[Add Vector Layer]** in the *Session* section of the Backstage to create a new vector layer. The new Vector Layer will be added to the session as an Unnamed Feature Set document, ready for editing or saving. To change the Vector Layer's name, save it (see [Saving Vector Layers](#)). The new filename will become the Vector Layer's display name.

Alternatively, Vector Layers can be created directly from the Home tab of the Ribbon. Click on the **[Add Layer]** dropdown and choose the *Add Vector Layer* option. The same mechanism is in place in the Layer Manager.

Whichever method is used to create a vector layer, the new layer is set as the active layer for immediate editing.

## 8.2.2 SAVING VECTOR LAYERS

Right click on a Vector Layer in the Backstage and choose “Save Data” or “Save Data As” to save the Vector Layer for future processing. The file will be saved in a \*.gvf format, which is a binary IAVO internal file format.

- Save Data – Allows you to store the Vector Layer. If there is no file currently associated (i.e., a new Vector Layer) you will be prompted to provide a filename. That filename will become the name of the Vector Layer.
- Save Data As – To prevent you from overwriting the original document, the Save Data As command stores the current Vector Layer in a new document.
- Export – Allows you to save the data in a number of different file formats.

### 8.2.2.1 VECTOR DATA EXPORT

Choosing “Export” launches the *Export* dialog (Figure 47), where you can specify the *Output Format*. Depending on the format chosen, you may be able to *Reproject Data*, *Include Textures*, or *Center the Data at the Origin*.

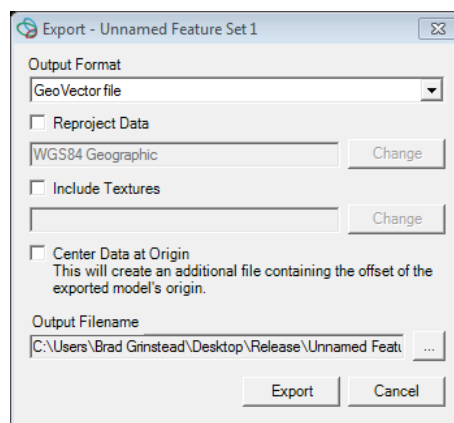


Figure 47. The vector data Export dialog allows you to save your vector data in a number of common output formats.

*Reproject Data* allows you to transform the vertices of the selected vector dataset from one spatial reference system to another.

For output formats that support texturing, checking the *Include Textures* checkbox allows you to specify the textures used for automatic texturing of the data. Click **[Change]** beside the *Include Textures* listing to specify the textures used for the automated texturing process. In the *GeoData Selection* dialog, select the images to use for texturing and hit **[OK]**. When the export process is run, each polygon in the vector data set will be textured with the “best” texture segment pulled from the selected images, based on a number of criteria including: best camera angle, highest resolution, and minimal occlusions.

Choose the *Center Data at Origin* option for those file formats that are designed to be used with data centered about the origin (0,0,0).

Once your options have been set, provide an *Output Filename*, and click **[Export]** to run the export process. This process can be lengthy for large datasets with textures.

### 8.2.3 LOADING VECTOR LAYERS INTO THE SESSION

Ingestion of Vector Layers is the same as ingestion of raster data (or any other data type). Use the **[Load Data]** option in the Backstage, and point the file dialog to the vector data file(s) you wish to load.

## 8.3 EDITING A VECTOR LAYER

With FeatureXTract, you can edit Vector Layers, as well as create and view them. It is important to note that unless the data is well registered, features extracted between one pair of images may not align exactly with another pair.

Whether you are extracting planar features from orthographic images, or 3D features from overlapping imagery, FeatureXTract depends on the underlying elevation source. There are three primary elevations sources that FeatureXTract draws from. In order (least priority to highest) they are: the low resolution DEM provided with the FeatureXTract install, user-provided DTED, and a user-specified DEM. The best choice, if you have it available, is to load a high resolution DEM into the application, and specify it as the working *Source DEM* in the *Home* tab of the Ribbon. Alternatively, in the *Settings* section of the Backstage, you can specify a directory location for local or network DTED data. Finally, if no other source of elevation can be found, FeatureXTract is deployed with a low resolution elevation model of the earth.

The command actions Copy (CTRL-C), Paste (CTRL-V), and Undo (CTRL-Z) are available during the vector editing process.

### 8.3.1 VECTOR LAYER VISIBILITY AND SETTING THE ACTIVE LAYER

The first step in editing a Vector Layer is to set it as both visible and as the active layer for editing, using the Layer Manager. Figure 48 shows the FeatureXTract module with the Data Layer Manager visible and a single Vector Layer ready for editing. Clicking on **[Layer Manager]** in the *Data Layers* group on the *Home* tab expands the Data Layer Manager if it is not currently displayed, and hides the Data Layer Manager if it is already visible. You can also click on the button of the divider between the Left Viewer and the Data Layer Manager to show/hide the Data Layer Manager. The Data Layer Manager can be resized by clicking and dragging on the divider.

Each Vector Layer in the Layer Manager has a checkbox and a radio button to the right of its name. The checkbox indicates visibility – checked means that the layer is visible in the Viewers. The radio button indicates the active (editable) layer. Module tabs appear in the ribbon, based on the type of the active layer. When the active layer is a Vector Layer, the *FeatureXTract* module tab appears in the Ribbon.



You can have any number of data layers loaded and visible, but only one data layer can be edited (active) at a time.

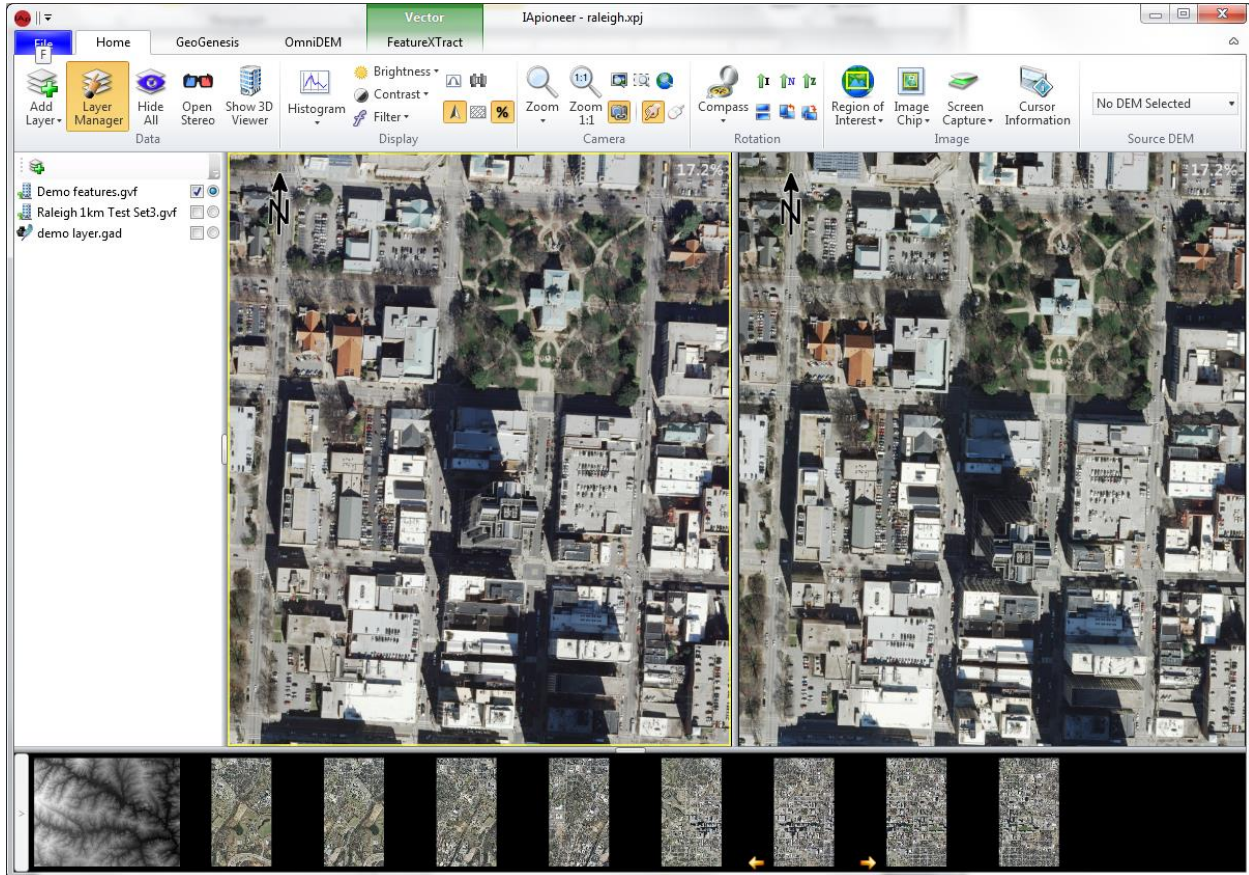


Figure 48. FeatureXTract module with a vector layer loaded and ready for editing.

### 8.3.2 CREATION TOOLS

The FeatureXTract *Creation* group contains the basic geometries used to extract complex 2D and 3D features from the imagery. The types of geometries supported include: polygons, points, polylines, and circles. The creation tools are modal, meaning that one creation mode is active at all times. This allows you to quickly draw many items of the same geometry without having to return to the Ribbon.

For all geometries, except points, the drawing process is similar. Begin by holding the CTRL key and left-clicking to set the initial point. Release the CTRL key and continue to left click each vertex of the geometry you are modeling. When you have placed the last point, right-click to finalize the shape.

**Note:** Mis-click a point? You can use the Backspace key to remove the last vertex you placed. Or, if you wish to start completely over, use the ESC key.

**Polygon** – There are two types of polygons that are available from the Polygon gallery: *Polygon*, and *Box*. A *Box* is a special form of *Polygon* where all the sides of the geometry are parallel or perpendicular to the first drawn segment. Alternatively, you can hold down the CTRL key while drawing a standard *Polygon* and force the newest line segment to be perpendicular to the last drawn line segment. All *Polygons* are closed shapes, where the last vertex placed is always connected back to the first placed vertex.

**Ellipse** – There are two types of ellipses available from the Ellipse gallery: *Ellipse*, and *Circle*. An *Ellipse* is drawn by placing 5 points anywhere on its perimeter. A *Circle* is drawn by placing three points anywhere on its perimeter.

**Point** – To draw a *Point*, CTRL-click to place the point in the image.

**Line** – The *Line* object can be used to draw single line segments, or joined segments as a polyline.

### ***Don't want to hit CTRL to start every geometry?***

Instead of starting every new geometry with a CTRL-click, you can use the mouse to initiate a new geometry. Simply click on the geometry type in the Ribbon and then begin clicking your vertices.

## **8.3.3 MANIPULATION TOOLS**

The FeatureXTract *Manipulation* group contains the tools necessary to convert the drawn geometries to accurate 3D shapes by visibly aligning the geometries in the images. Making 3D models is simply a matter of drawing the shapes in one image, and then visibly aligning them in another. The available manipulation actions are: epipolar, z-axis, freehand, and rotation. Like the *Creation* tools, the *Manipulation* tools are modal, with one *Manipulation* mode active at all times.

**Move Epipolar** – Clicking and dragging objects when the Epipolar movement mode is active restricts movement to the epipolar line defined by the relationship between the sensor models of the images in the Left and Right Viewers. This is the primary manipulation mode used to model in 3D between two images. By drawing the geometry in one Viewer and moving it along the epipolar line in the other Viewer until it aligns with the imagery, you can accurately place the geometry in 3D space.

**Move Z-Axis** – Clicking and dragging objects when the Z-Axis movement mode is active restricts movement to the local z-axis, as defined by the data's spatial reference system.

**Move Freehand** – Clicking and dragging objects while the Freehand movement mode is active restricts the movement to the local X-Y plane (keeping the z values constant), as defined by the data's spatial reference system.

**Rotate** – Clicking and dragging objects while the Rotate mode is active rotates the selected objects around the local z-axis.

### 8.3.4 DETAILING TOOLS

The FeatureXTract *Detailing* group contains tools to add 3D details to existing geometries. The available detailing actions are: polygon extrusion, feature lofting, roof building, and reversing the selected face normal. Unlike the Creation and Manipulation tools, the Detailing tools are single-use operations that act on a selected object or group of objects.

**Extrude Polygon(s)** – Extrudes the selected polygon(s) to the underlying elevation source (3D model, user-specified DEM, DTED, or embedded DEM).

**Planar Extrusion** – All points in the polygon are extruded to the same elevation value, the lowest point of extrusion.

**Extrude by Point** – Each point is extruded separately, with each lying on the first intersected surface.

**Loft Feature** – Loft a selected polygon to a point, or another polygon of the same topology (number of sides). Use the Loft action to generate any conic form, such as: cone (circle to point), pyramid (polygon to point), truncated cone (circle to circle), or truncated pyramid (polygon to polygon). Combine lofting with *Rotation* and *Freehand* movement to add twist and skew to your conics.

**Reverse Face** – Sometimes in the creation process, your face normals may be reversed from how you intended to draw them. Use this tool to reverse the directions of the selected faces.

**Mesh Convert** – Provides conversion from a set of polygons to a Mesh object, or from a Mesh object to a set of polygons. The parameterized structures in the Roof and Structures gallery and the Model Library both use Mesh objects.

**Split Edge** – Splits the selected edge by adding a new vertex in the center of the line segment.

**Combine Shapes** – Provides the ability to create complex shapes by adding or subtracting simple shapes from each other.

**Union** – Combines any number of 2D shapes into a single 2D shape.

**Subtraction** – Subtracts one shape from another.

**Roofs and Structures** – This gallery contains a set of parameterized structures, each based on an underlying feature type.

## 8.4 BUILDING A SIMPLE MODEL

Let's start by constructing a simple 3D model of a rectilinear building with a simple superstructure. First, create a new vector layer and then make it the active layer for editing (see [Creating a Vector Layer](#) and [Vector Layer Visibility](#) and Setting the Active Layer). Next, load overlapping imagery into the Left and Right Viewers. Navigate to a simple rectangular building, such as that seen in Figure 49.

On the *FeatureXTract* tab, select the *Creation* mode as Polygon. Draw the outline of the roof (the gutterline) in the Left Viewer by CTRL-clicking the first point, and then clicking on each vertex of the gutterline. Once the last point has been placed, right-click to finalize the shape. In the Right Viewer, the shape will be projected, based on the elevation drawn from the elevation source specified – DTED or a Source DEM, if you specified that in the Settings or from the Source DEM on the Home tab; the default elevation model, if not.

Set the *Manipulation* mode to Move Epipolar. In the Right Viewer, click on the polygon and drag it along the epipolar line until the shape aligns with the building's gutterline in the Right Viewer (Figure 49). Once the shapes are aligned in both images, the polygon has been accurately located in 3D space.

Next, click **[Extrude Polygon(s)]** in the *Detailing* group. The selected polygon will be extruded to the underlying elevation source to provide a 3D structure.



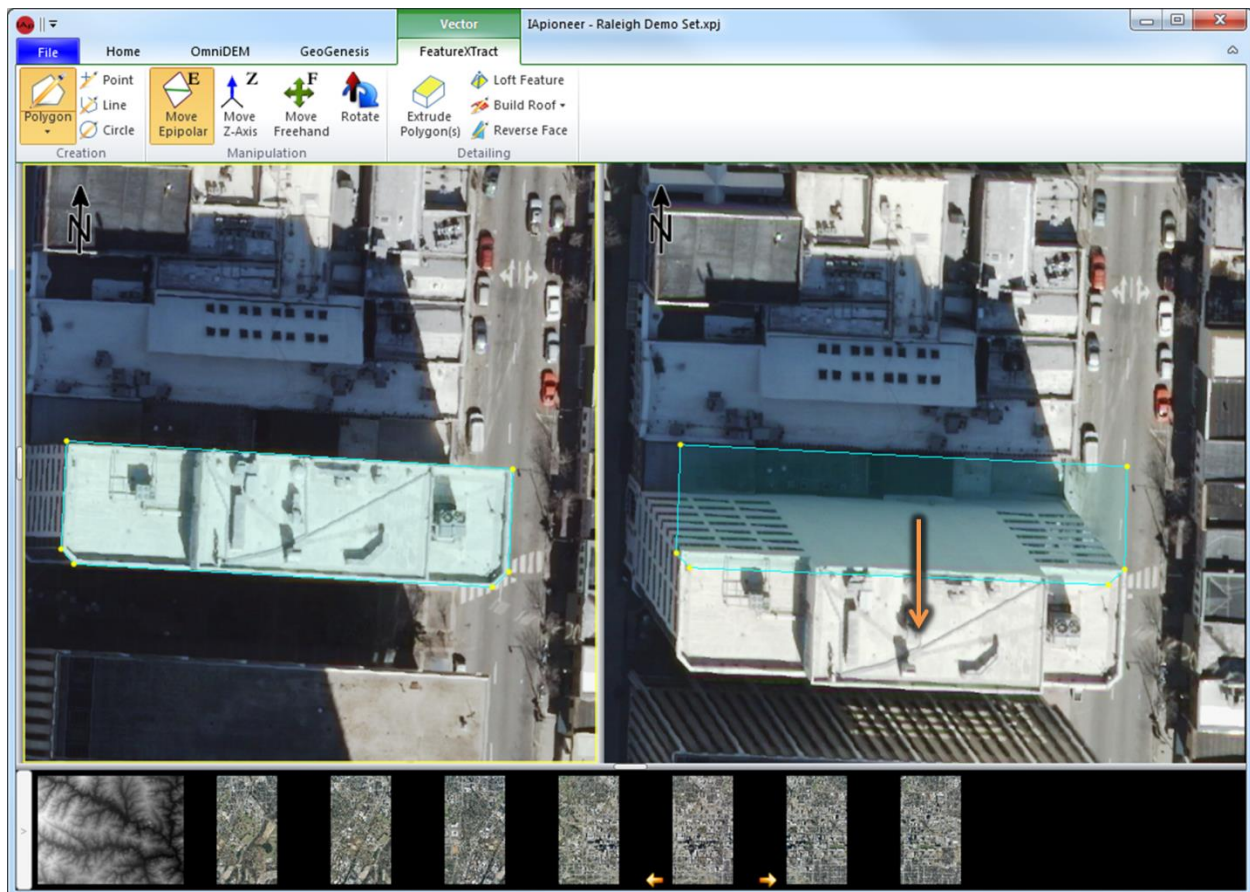


Figure 49. Set the 3D location of the polygon by visually aligning it in both images.

To add the superstructure, repeat the process above, outlining the perimeter of the superstructure. When the superstructure is extruded, the base of the structure is lying on the terrain. However, we want the base to lie on top of the building, not on the terrain. Set the Manipulation mode to Move Z-Axis. Click on the base of the extruded superstructure. Because there are multiple overlapping polygons at the location where the cursor was clicked, the *Select Feature* dialog (Figure 50) will appear. All the features lying beneath the cursor appear in the selection dialog, in order of elevation – the lowest elevation sources are on the bottom of the list, with features having the highest elevation on the top of the list. Selecting a feature in the list highlights the feature in the Viewers. Press **[OK]** to select the feature. Once the bottom feature has been selected, click and drag inside the feature to raise the elevation until it is aligned with the bottom of the superstructure in the image, as seen in Figure 51.

**Note:** Multiple features can be selected by holding Shift and repeatedly launching the Select Features dialog.

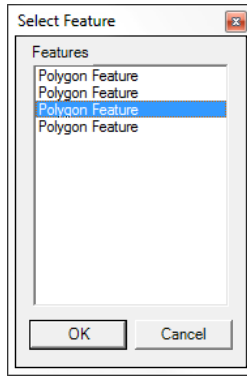


Figure 50. The feature selection dialog.

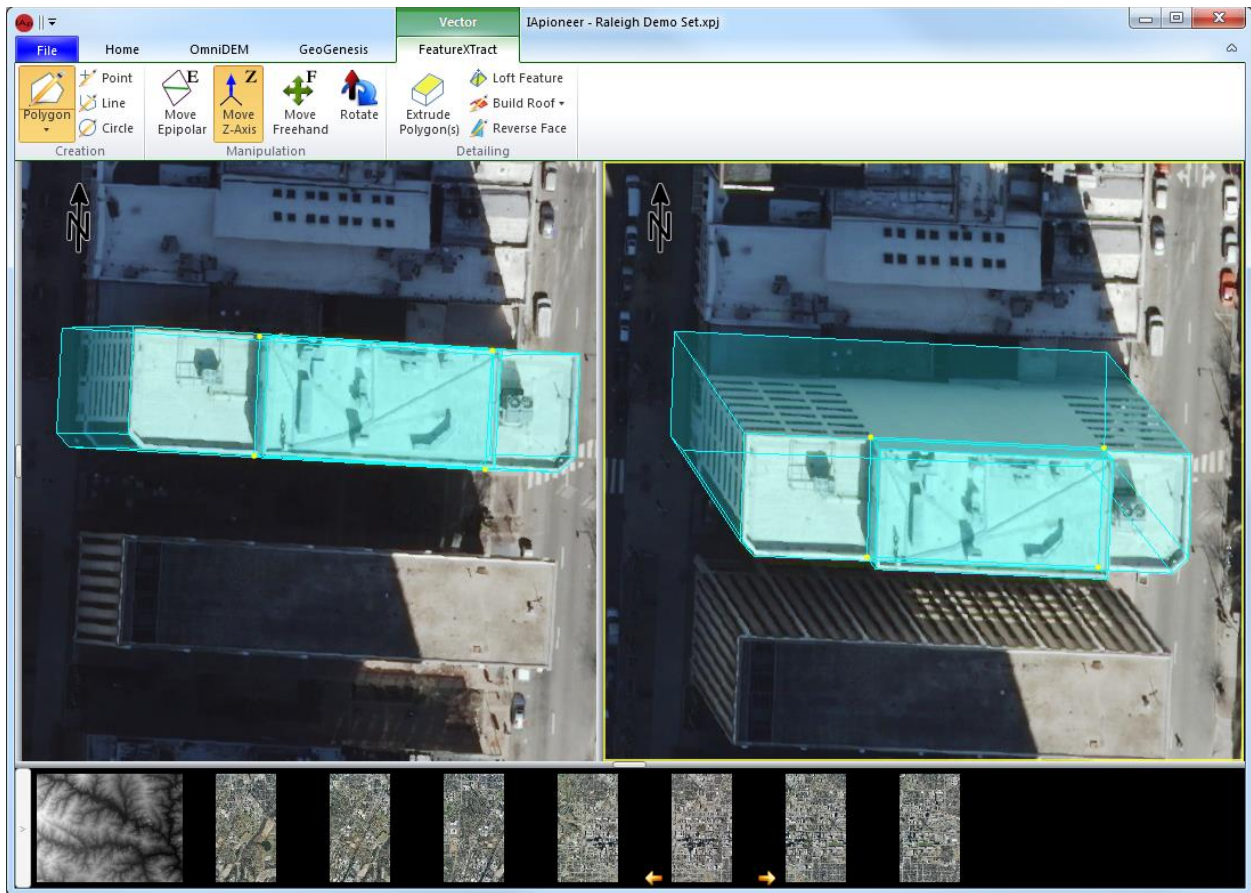


Figure 51. 3D building model with superstructure.

## 8.5 BUILDING MORE COMPLEX MODELS

Using the same principles as Constructive Solid Geometry (CSG), where complex solids are built using binary operations on simpler primitives, you can build complex 3D site models in FeatureXTract using a combination of simple tools. For example, a water tank could be represented by a cylindrical body and conical top. We can model a water tower by combining the cylinder and cone, along with the stanchions and supporting elements.

### 8.5.1 USING THE LOFT TOOL TO CREATE CONICS

Cones, pyramids, and the truncated forms of these shapes can be easily created using the Loft Feature tool in the Detailing group of the FeatureXTract tab. This allows us to rapidly create common geometry that would be difficult to create by hand.

For example, the cone of the building in Figure 52 was created by drawing a circle on the top of the superstructure, followed by a point to represent the tower tip, and moving the shapes along the epipolar lines to set the 3D locations. Then, drag-select the two shapes and press **[Loft Feature]**. FeatureXTract will automatically connect the vertices of the base polygon (circle) to the point to form the cone. This same process can be performed with any base polygon to form a polygonal pyramid.

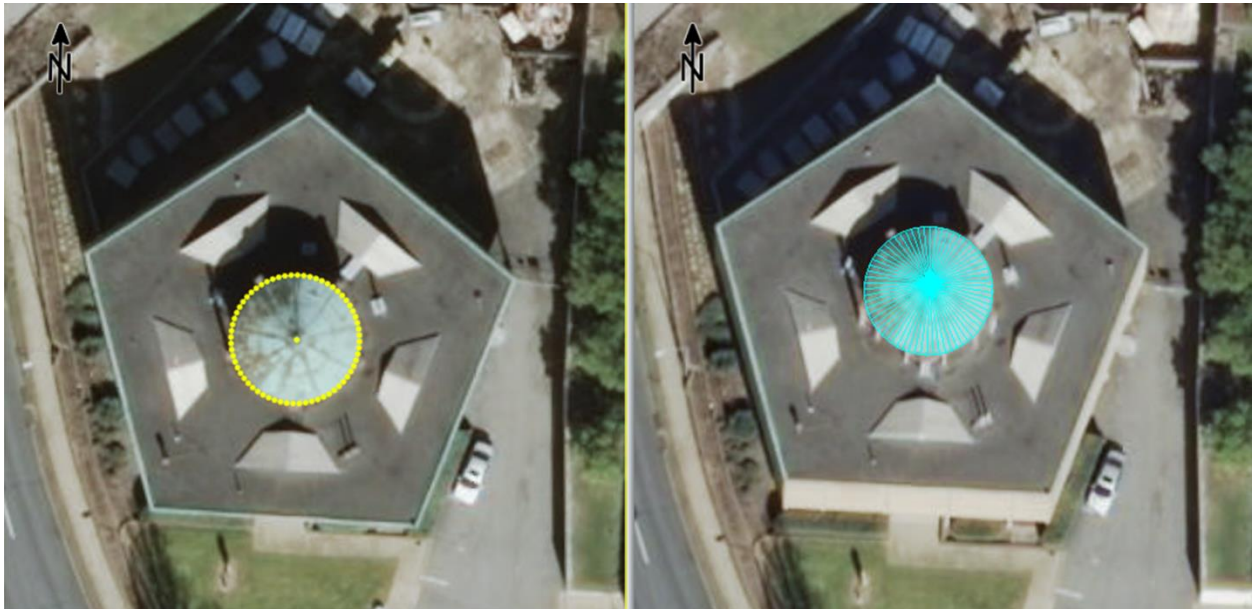


Figure 52. Loft a circle to a point to create a cone.

Many roof types are in the form of truncated pyramids. For example, see the main roof of the building in Figure 53. Create the polygons representing the lower and upper roof lines, and move the shapes



along the epipolar lines to set their 3D locations. Select both shapes and press [**Loft Feature**] to form the truncated pyramid roof.



Figure 53. Loft a polygon to another polygon to create a truncated pyramid.

### 8.5.2 USING THE SNAPPING TOOL FOR COMPLEX GEOMETRY

The roof shape in Figure 53 can be also be generated using the snapping tool. The snapping tool (SHIFT) allows you to connect new geometry to existing vertices, and is one of the primary mechanisms used for complex geometry creation. To begin, start as in the previous example, by drawing the upper and lower rooflines and using the epipolar manipulation to set their 3D locations.

Next, hold both CTRL and SHIFT and move the mouse cursor to the lower left corner of the lower (larger) roof polygon. The CTRL button is used to initiate the drawing process, while the SHIFT button signals the snapping mechanism. When the mouse cursor is near – within 5 pixels – an existing vertex, the cursor will “snap” to the vertex location. Clicking while “snapped” sets the new drawing point to the existing point, thereby locking the new geometry and the old geometry together. Release the CTRL key, and move to the lower left corner of the upper (smaller) polygon. When the cursor is moved more than 5 pixels from the existing vertex, it will move freely, until moved within 5 pixels of another vertex. Click on the new vertex while snapped to set the second point. Continue around the roof section to the upper left corner of the upper roof polygon, and then to the upper left corner of the lower polygon. When the last point has been placed, right-click to finalize the shape. You can repeat this process for each of the four roof segments, as seen in Figure 54.





Figure 54. Using the snapping tool to build a roof structure by sections.

**Hint:** Preserve your outward-facing normal by placing vertices in a counter-clockwise (right hand rule) order

### 8.5.3 USING BOOLEAN GEOMETRY TO COMBINE SHAPES

The concept of Boolean geometry abounds in manmade structures, and support the basic premise of 3D FeatureExtract – that you can model complex shapes using combinations of simple structures. For modeling purposes, we define this concept in the Combine Shapes tools.

Figure 55 shows the process of creating a pill shape by combining a quadrilateral with a pair of circles using the *Union* operator from the **[Combine Shapes]** gallery. The Union operator uses the Boolean formula  $A + B + C + \dots$  to combine any number of simple 2D shapes into a single polygon.



Figure 55. Combining multiple shapes using Boolean geometry.

Figure 56 shows the process of subtraction, where one shape is removed from another, using the *Subtraction* operator from the **[Combine Shapes]** gallery.. This reflects the space carving approach of

reducing simple geometries to form more complex ones. The Subtraction operator uses the Boolean operation  $A - B$  to remove one 2D shape from another. There is a limitation that disallows any resulting geometry with a hole in it.



Figure 56. Using Boolean subtraction to carve complex shapes.

## 8.5.4 USING PARAMETERIZED STRUCTURES

There are a number of parameterized structures you can use as a shortcut to geometry creation. 3D FeatureExtract has the capability to build gable, saltbox, hipped, pyramid, parapet, gambrel, mansard, cylindrical vault, pitched vault, and dome type roofs from base polygons. All of these are built upon base polygons. Walls can be built from a base polyline.

The output of a parameterized structure dialog is a Mesh object. This is a single object whose vertices cannot be individually edited, unless it is converted to a set of polygons using the **[Mesh Convert]** process. The parameters for the Mesh object are stored with it, allowing you to edit them after creation. To edit the parameters once the Mesh object has been created, select the Mesh and then select the appropriate parameterized structure from the gallery. The dialog will be populated with the current parameters, which you can then edit.

### 8.5.4.1 CREATING GABLED AND HIPPED ROOF VARIANTS

Figure 57 shows how to create a pitched roof from a rectangular roof gutterline by selecting the base rectangle and choosing “*Hipped Roof*” from the parameterized structures gallery in the *Detailing* group. Set the *Roof Axis* to match the orientation of the pitched roof ridgeline. Then, set the *Height* parameter to adjust the height of the roof until the preview geometry aligns with the roof geometry in the imagery (as seen in Figure 57). Use the *Ridgeline Offset* to account for any offset of the axis from the center line.



If your pitched roof has vertical ends – also known as a gabled roof – you are done. However, if all sides of your pitched roof slope downward, you have a hipped roof, as is the one in Figure 57. Creating the hips in 3D FeatureXtract is straightforward. If both hips appear to be the same, use the *Lock Hip Values* checkbox. Adjust the *Left Hip* and *Right Hip* values until the preview geometry aligns with the imagery. Press **[OK]** to finalize the geometry.

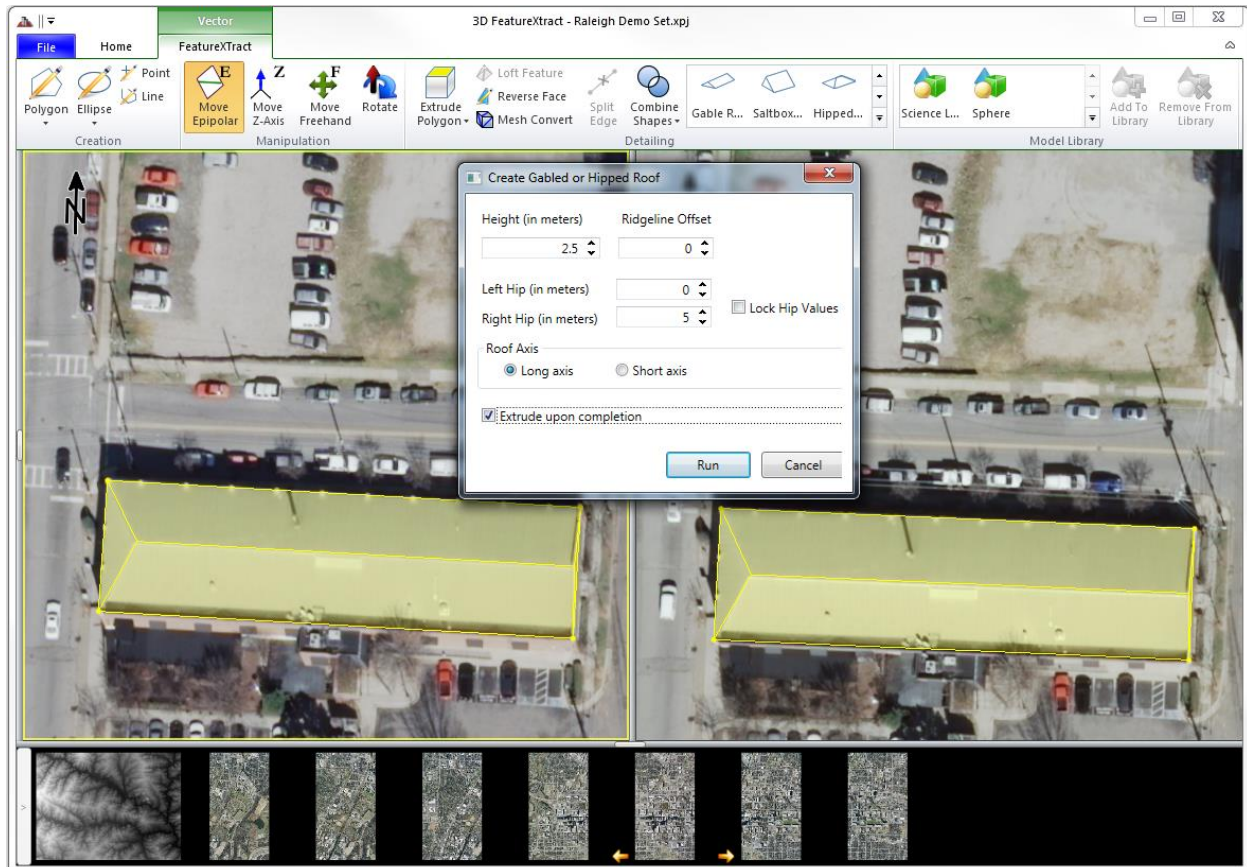


Figure 57. Creating a hipped roof from a base polygon.

#### 8.5.4.2 CREATING PARAPET ROOFS

Figure 58 shows how to create a parapet roof from a roof gutterline by selecting the base polygon and choosing “*Parapet Roof*” from the parameterized structures gallery in the *Detailing* group. Set the *Width* to match the observed width of the parapet. Then, set the *Depth* parameter to adjust the height of the parapet. Press **[OK]** to finalize the geometry.

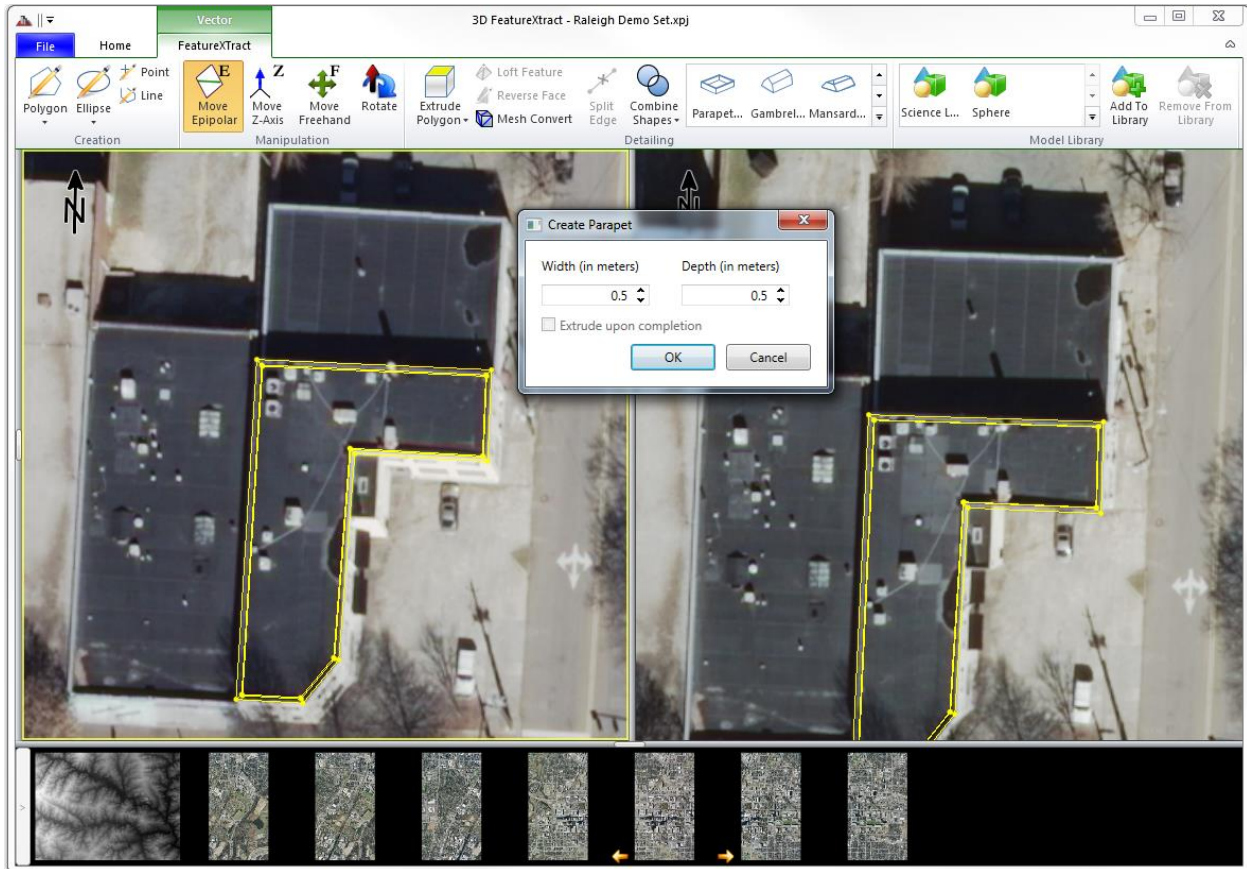


Figure 58. Creating a parapet roof from a base polygon.

### 8.5.4.3 CREATING GAMBREL AND MANSARD ROOFS

Mansard and Gambrel roofs have multiple pitch slopes, leading to a common centerline. 3D FeatureXtract has quick access to each of these through the parameterized structures library. Figure 59 shows how to create a mansard roof from a rectangular roof gutterline by selecting the base rectangle and choosing “*Mansard Roof*” from the parameterized structures gallery in the *Detailing* group. Set the *Roof Axis* to match the orientation of the pitched roof ridgeline. Then, set the *Peak Height* parameter to adjust the height of the roof until the preview geometry aligns with the roof geometry in the imagery. Set the *Ridge Length* to match the ridgeline geometry in the image. The *Curb Offset* and *Height* parameters describe the falloff of the second slope. Press **[OK]** to finalize the geometry.

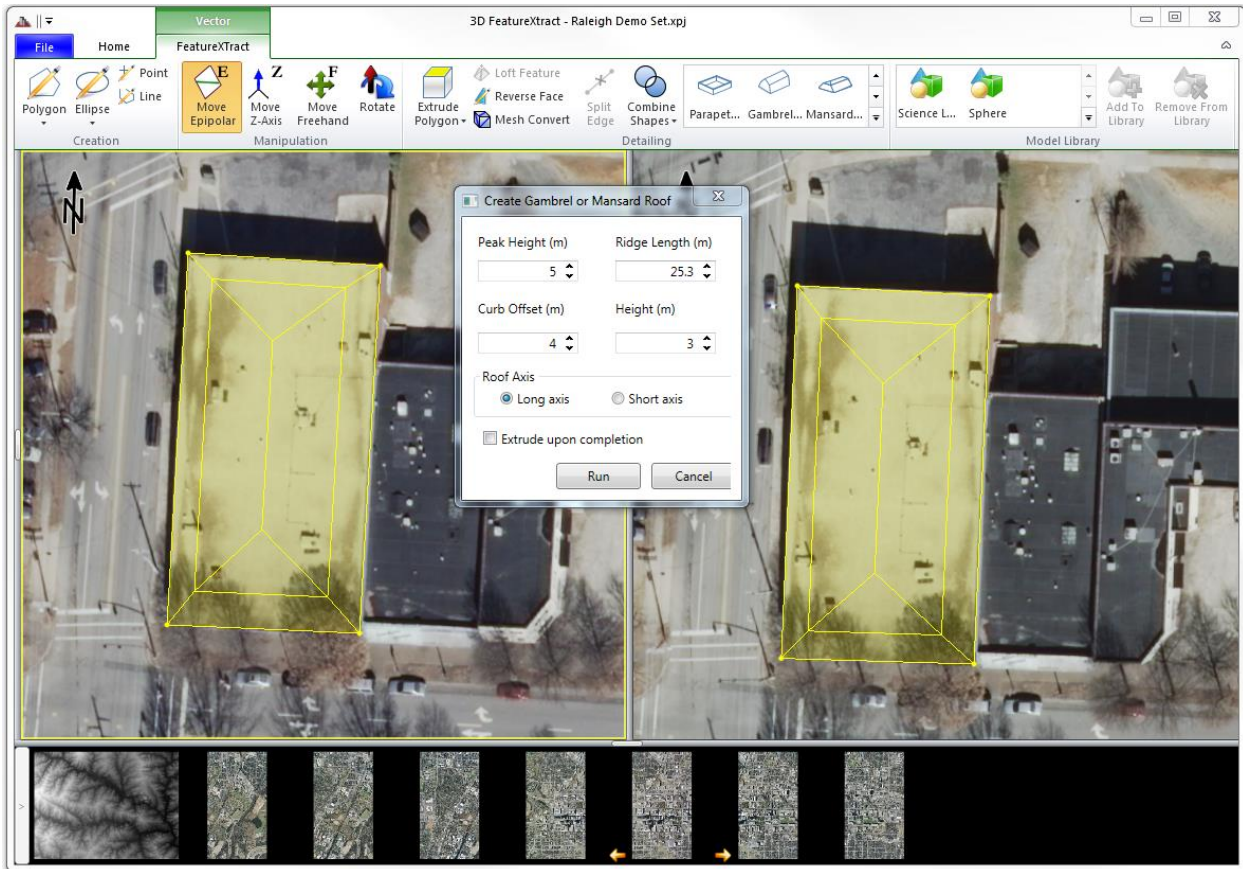


Figure 59. Creating a mansard roof from a base polygon.

#### 8.5.4.4 CREATING VAULTED ROOFS

3D FeatureXtract has two different parameterized vaults for quickly adding these structures to your scene. The barrel vault (barracks, Quonset) is essentially a half-cylinder laying on its side. A pointed vault lofts the structure to a peak. Both vault roof types are constructed in a similar fashion.

Creating a barrel vault (barracks, Quonset) roof from a base polygon follows a similar process to that of the pitched roof creation (Figure 60). Select the base polygon, and then choose “*Barrel Vault*” from the parameterized structures gallery in the *Detailing* group. Set the *Roof Axis* to match the orientation of the pitched roof ridgeline. Then, set the *# Slices* parameter to match the amount of geometry refinement you wish to have in the final geometry. More slices means a smoother roof, but also more geometry to manipulate and texture. Once the number of slices has been set, use the *Height* parameter to adjust the height of the roof until the preview geometry aligns with the roof geometry in the imagery. Press [OK] to finalize the geometry.



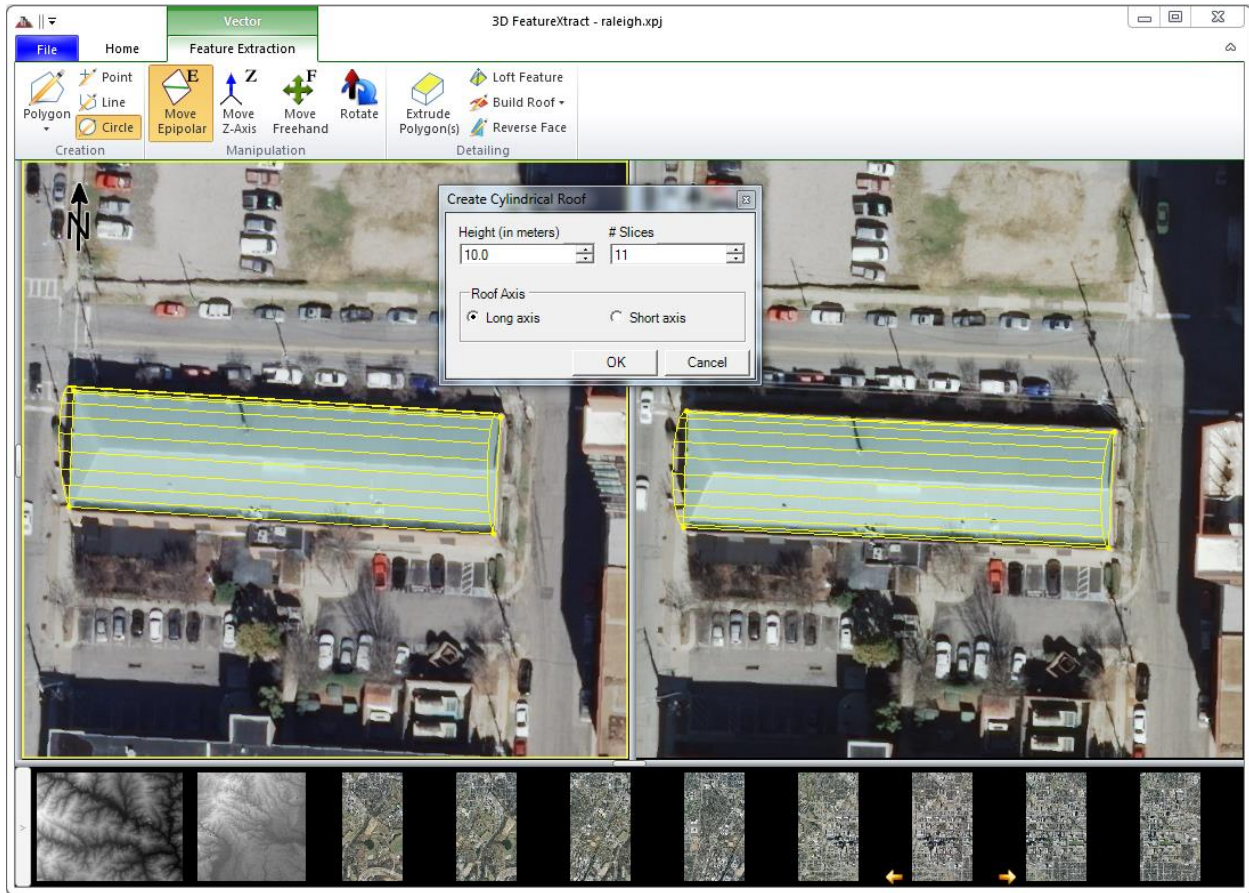


Figure 60. Creating a cylindrical roof from a base polygon.

#### 8.5.4.5 CREATING DOMES

You can easily create a dome from a circular feature by using the “Dome” option from the parameterized structures gallery in the *Detailing* group. Set the *# Layers* parameter to specify the geometry refinement desired. Then, set the *Height* parameter to match the preview geometry to the imagery. Press [OK] to finalize the geometry.

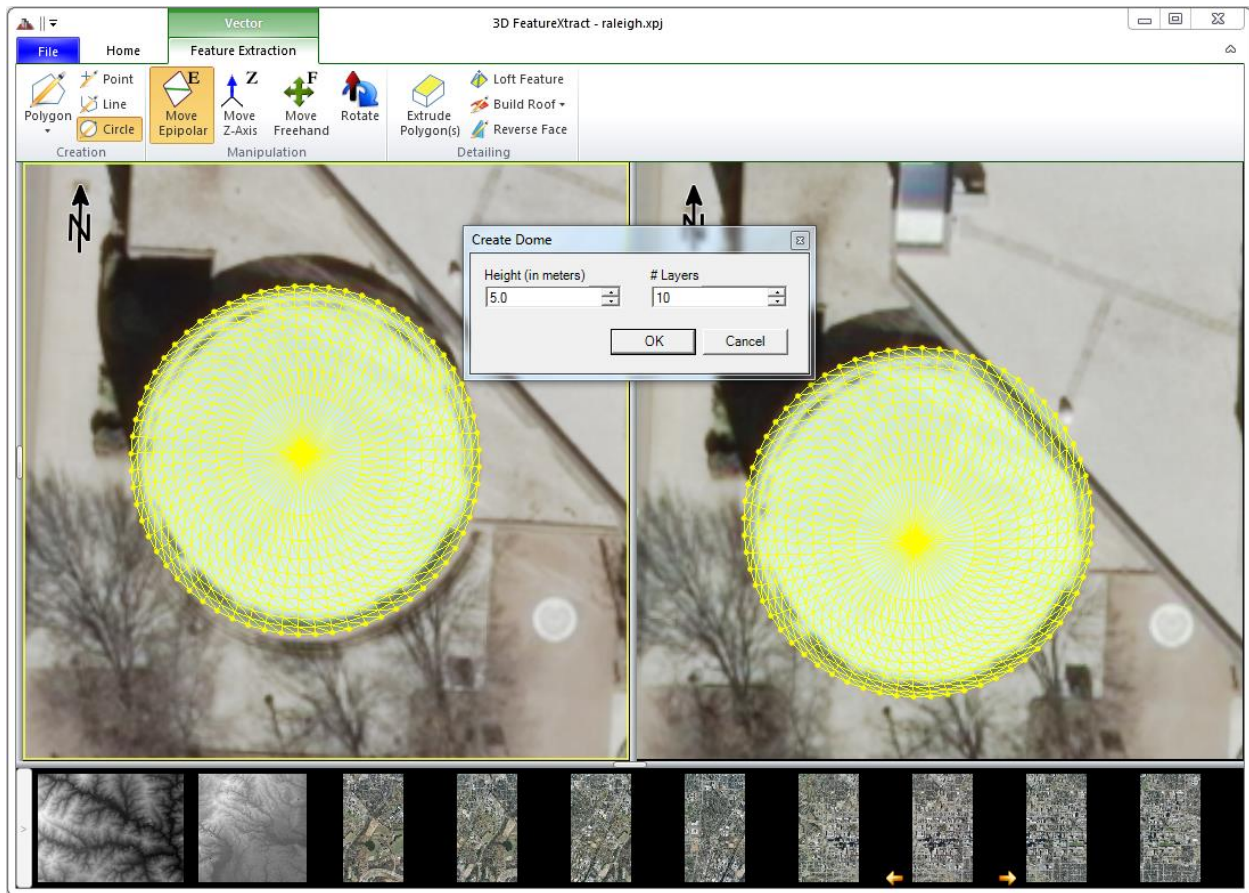


Figure 61. Creating a dome from a circle base.

#### 8.5.4.6 CREATING WALLS AND FENCES

Walls and fences can be created from a line feature by using the “Wall” option from the parameterized structures gallery in the *Detailing* group, as seen in Figure 62. Set the *Height* parameter to match the preview geometry to the imagery. Press **[OK]** to finalize the geometry. Then, set the width to match the width of the wall. Side To Build From describes the side of the measured line to use to build out the wall. Side A and Side B reflect the “left” and “right” sides of the line, while Split builds the wall using the measured line as a centerline for the wall. Fence uses the measured line as a centerline, and sets the Width to 0. Once the parameters have been set, press **[OK]** to finalize the geometry.

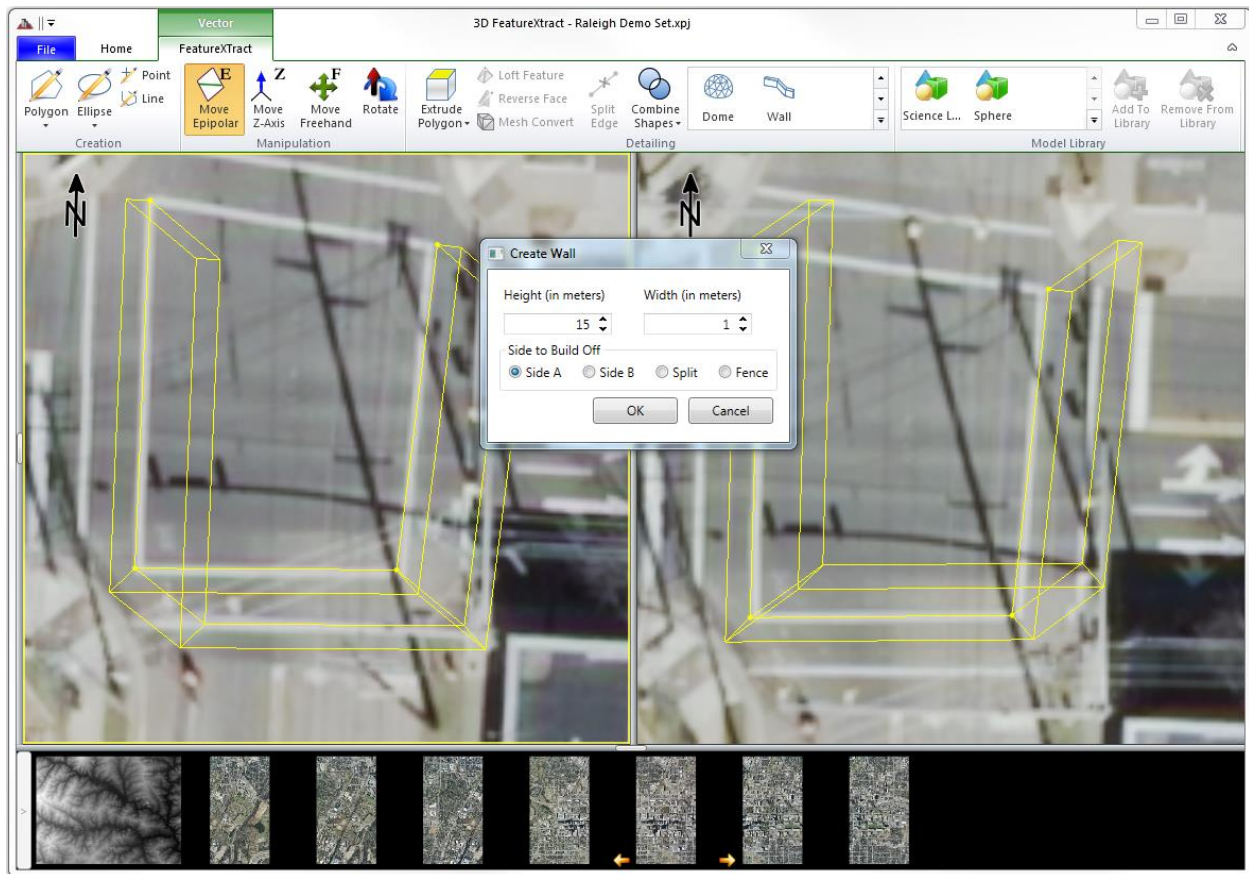


Figure 62. Creating a wall from a line base.

## 8.6 USING THE 3D VIEWER

The 3D Viewer is a useful tool for examining your created FeatureXtract output, and for performing Quality Assurance on the fly. To launch the 3D Viewer, click on [Show 3D Viewer] in the Home tab of the Ribbon. The 3D Viewer is launched as a new viewer, and has its own controls. The 3D Viewer displays the active Vector Layer (Figure 63). Each time a new vector layer is loaded into the 3D Viewer, it is displayed from above.



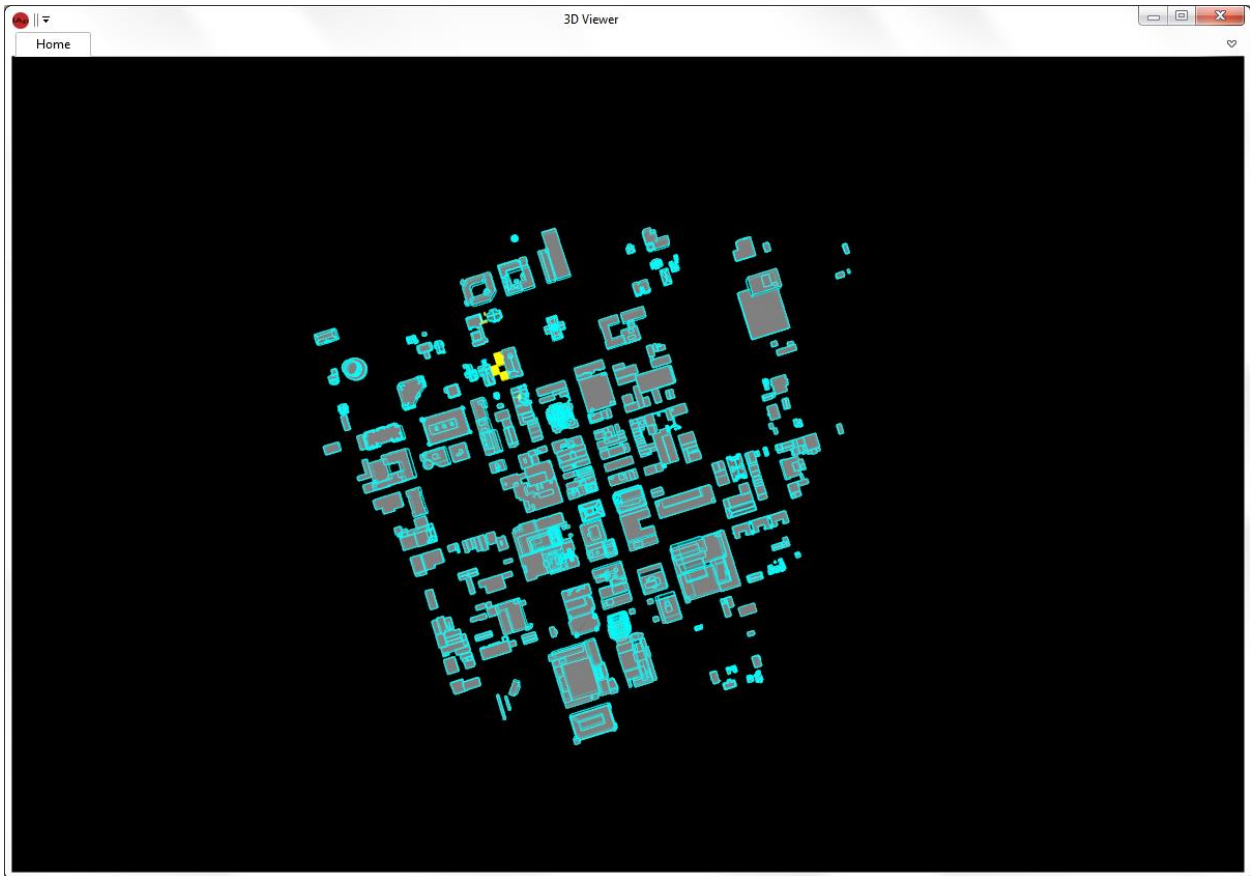


Figure 63. The 3D Viewer, viewing a vector layer from above.

### 8.6.1 3D VIEWER NAVIGATION

The 3D Viewer navigation controls are similar to those of most flight simulators.

**Note:** If you get lost in the navigation, and set the camera to a viewpoint where you cannot find the 3D scene you are editing, use the **[View Extents]** option in the Home tab of the 3D Viewer Ribbon to reset to the default overhead view.

**Zooming In and Out** – Zoom into the current scene by rolling the scroll wheel up (away from you). Zoom out of the current scene by rolling the scroll wheel down (toward you).

**Looking Around** – Click and drag with the left mouse button to grab a point in the scene and move it. The 3D point that was clicked on tracks the mouse cursor as it moves.

**Camera Rotation** – Click and drag with the right mouse button to rotate the camera about the current viewpoint.

**Fixed Elevation Panning** – Click and drag with the center mouse button (or scroll wheel) to pan the camera around the scene at a fixed elevation and camera angle.

**Flythrough** – Hold down the left and right mouse buttons simultaneously to move forward along the current look angle. Move the mouse to change the look angle and fly direction. Moving the mouse forward (away from you) causes the camera to look down, and moving it backward (toward you) causes the camera to look up. While flying, holding the SHIFT key speeds up the movement by 500%.

### 8.6.2 REAL-TIME VISUALIZATION

With the 3D Viewer active, you can visualize your 3D geometry creation and editing in real-time, providing a valuable resource for accurate and timely modeling, as well as in-process Quality Assurance. Figure 64 shows the 3D Viewer as new geometry is being created. The top cylinder is resting on the bottom one, and there is no air gap, as evidenced by inspection in the 3D Viewer.

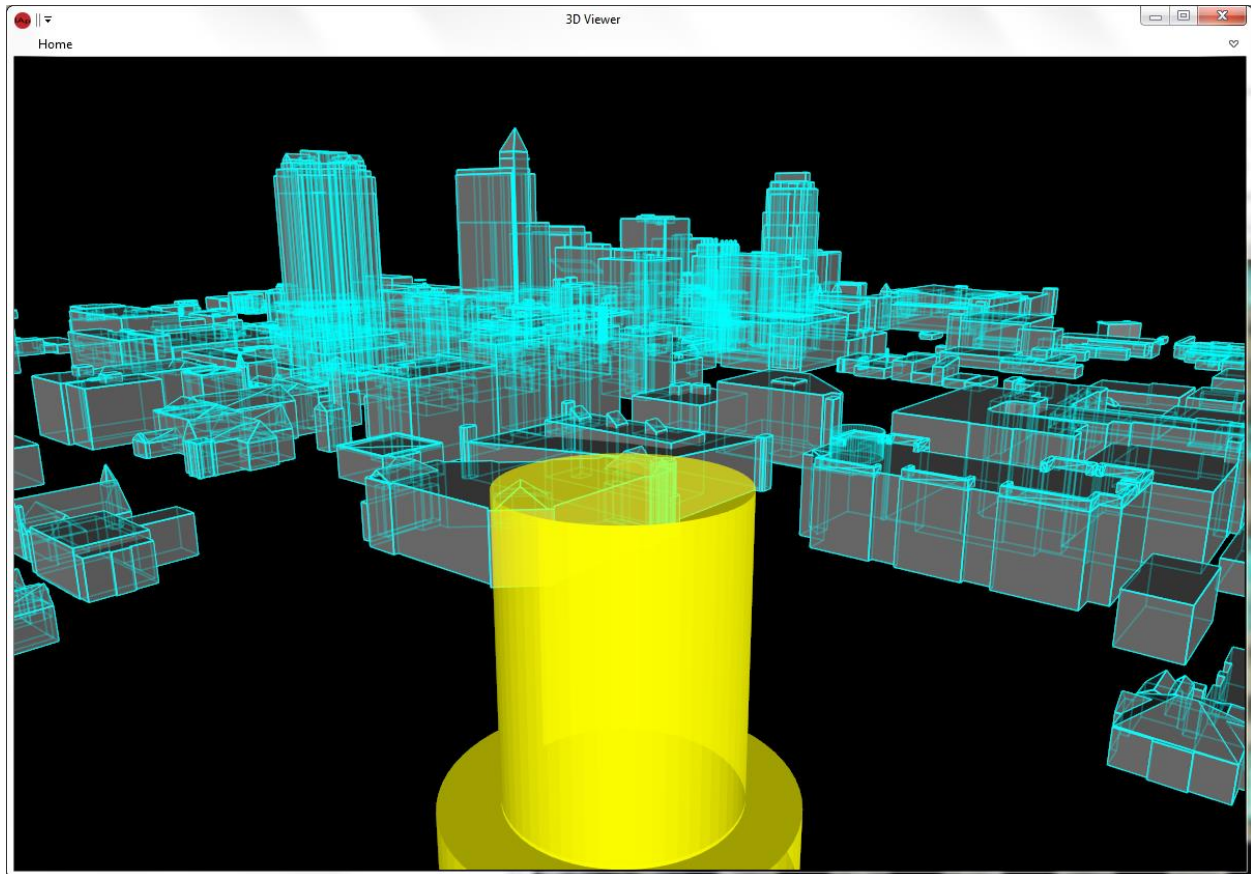


Figure 64. Using the 3D Viewer to visualize geometry creation in real-time.

## 8.7 COMBINING IT ALL TOGETHER

Combining these concepts together, it is simple to create large-scale 3D site models from overlapping imagery. Figure 65 shows a compilation of hundreds of structure models covering the entire downtown Durham, NC area, all modeled in FeatureXTract. You can export the final model into a number of formats, including textured KML (KMZ), as seen in Figure 66 (see [Vector Data Export](#)).

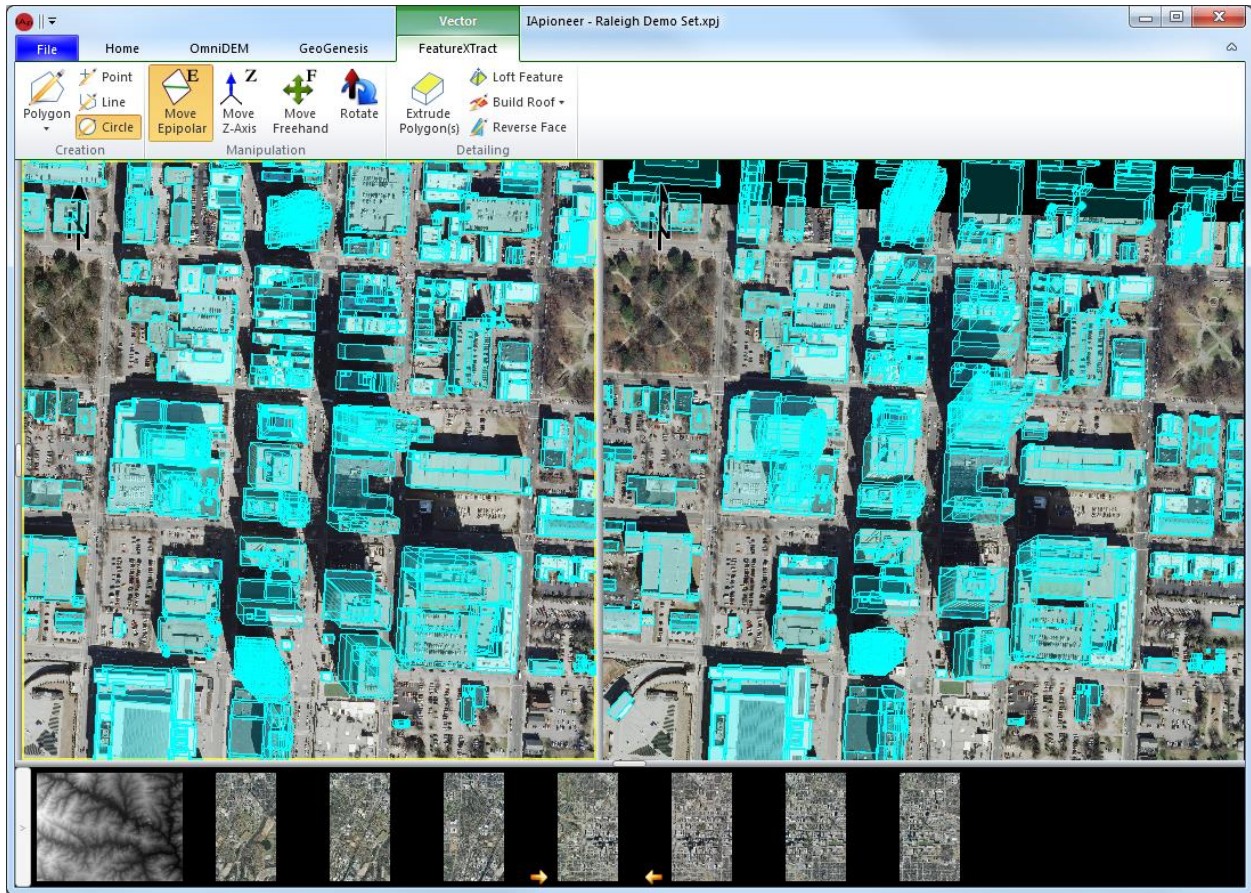


Figure 65. 3D site model containing hundreds of structures.





Figure 66. Exported textured KMZ site model shown in Google Earth.

# INDEX

## 3

3D, 57, 59, 63  
3D viewer, 75  
    flythrough, 77  
    navigation, 77  
    panning, 77  
    rotation, 77  
    zoom, 77

## A

active layer, 43, 59  
Add Annotation Layer, 42  
Add Vector Layer, 57  
affine, 14  
annotations, 42  
    annotation layers, 42, 43  
    creating, 42  
    editing, 43, 46  
    layer management, 42  
    loading, 43  
    properties, 47  
    save, 43  
    save as, 43  
automatic texturing, 40  
Auxiliary Viewer, 10

## B

Backstage, 5, 42, 57  
    Session, 6  
Band Info, 12  
Brightness, 9, 25

## C

Camera group, 9  
Camera Lock, 9  
Chip from ROI, 39  
clip art, 44, 45  
Color Curves, 24  
color transformations, 24  
Combine Shapes, 62, 68  
    subtraction, 62, 68  
    union, 62, 68

Compass, 10  
Contact Us, 2  
    By e-mail, 2  
    By phone, 2  
Contrast, 9, 25  
copy, 59  
Creation group, 60  
Crop, 36, 39  
Crop, Resample, and Reproject, 36, 39  
    geospatial coordinates, 36  
    geospatial data, 36  
    Reproject, 36  
    Resample, 36  
Cursor Information, 26

## D

Data Discovery, 7, 30  
Data Layer Manager, 11, 43, 59  
Data Layers group, 11, 43, 59  
Datum, 13  
DEM, 6, 59  
Detailing group, 62, 63, 69, 70, 71, 72, 73, 74  
Digital Affine, 18  
Display, 33  
Display Format, 27  
Display group, 9, 24  
DTED, 59, 63

## E

EGM96, 13, 28  
elevation source, 59, 63  
ellipse, 45  
epipolar line, 63  
Export Data, 36  
    Crop, Resample, and Reproject, 36  
    Export Raster Data, 38  
    Image Chipping, 39  
    Type Conversion, 38  
    vector data, 40  
exterior orientation (EO), 14  
Extrude Polygon, 62, 63  
    by point, 62  
    planar, 62

## F

- feature extraction, 57
- FeatureXTract, 57, 59, 63, 66
- fiducials, 14, 15
- Filters, 9, 25
  - Gaussian High Pass, 25
  - Gaussian Low Pass, 25
  - Haze Reduction, 25
  - High Pass, 25
  - Low Pass, 25
- focal length, 14
- focal offset, 14
- Footprints, 49
- frame camera, 13
  - configuration, 14
  - Digital Affine, 18
- Full Screen Chip, 39

## G

- Geolocation Formats, 10, 27
- grid lines, 9, 25
- Grid Lines, 34
- gutterline, 63

## H

- Hide All, 11
- Histogram, 9
- Histogram Adjustment, 24
- Home Tab, 9, 11, 43, 59

## I

- IApioneer, 42, 43
- Image Chipping, 39
- Image Gallery, 5
- Image group, 26
- image overview, 9
- Image Overview, 25
- Image Up, 10, 33
- Input Format, 28
- Insert* group, 44
- Inspect/Measure* group, 46
- Installation, 1
- interior orientation (IO), 14

## J

- jump to location, 9, 10

## K

- KML, 78
- KMZ, 78

## L

- Layer Manager, 5, 11, 43, 59
- Left Viewer, 4
- length, 46
- Load Data, 7
- Loft Feature, 62, 66

## M

- Manipulation group, 61
- Manipulation* mode, 61, 63, 64
- Measurement, 29
- mensuration, 46
  - settings, 50
- Mensuration Properties, 48
- Mensuration Tools, 50
- Mesh Convert, 62
- Metadata, 12, 15
- MIL-STD-2525B, 44
- Move Epipolar, 61, 63
- Move Freehand, 61
- Move Z-Axis, 61, 64

## N

- New Viewer. *See* Auxilliary Viewer
- north arrow, 45
- North arrow, 9, 25
- North Up, 10, 33

## O

- ortho. *See* orthographic
- orthographic, 13, 23
  - Sensor Model Configuration, 23

## P

- pan, 9

- Pan Mode, 9
- parameterized structures. *See* Roofs and Structures
- Parameterized Structures, 69
  - barrel vault, 72
  - dome, 73
  - fence, 74
  - gabled, 69
  - gambrel, 71
  - hipped, 69
  - mansard, 71
  - parapet, 70
  - pointed vault, 72
  - saltbox, 69
  - wall, 74
- paste, 59
- Pixel Cursor, 32
- point, 45, 51
  - settings, 51
- point marker, 45, 46, 52
  - settings, 52
- polygon, 44, 48, 53
  - edit vertices, 46
  - settings, 53
  - subdivide*, 46
- polyline, 45, 54
  - settings, 54
- Projection, 13
- pyramids, 7

## R

- radial distortion, 14
- RASTER DATA, 8
  - chipping, 39
  - Exploring, 9
  - Export, 36
  - Properties, 12
- rectangle, 45
- reduced resolutions. *See* pyramids
- Region of Interest, 35, 39
- Region Of Interest, 9
- Reproject, 36, 39
- Resample, 36, 39
- Reverse Face, 62
- Ribbon, 4
  - File tab, 5
- Right Viewer, 5
- Roam Mode, 9

- roof shapes
  - gabled, 70
  - hipped, 70
- Roofs and Structures, 62
- Rotate, 61
- rotation, 10
- Rotation group, 10
- RPC, 13
  - Configuration, 22
- R-sets. *See* pyramids

## S

- Scanned Film, 15
- Screen Capture, 40
  - ROI, 40
  - to Clipboard, 40
  - to File, 40
  - to PowerPoint, 40
- Sensor Model, 12
  - frame camera, 13
  - Frame Camera Sensor Model Configuration, 14
  - orthographic, 13
  - Orthographic Sensor Model Configuration, 23
  - RPC, 13
  - RPC Sensor Model Configuration, 22
  - Setting Up Camera Sensor Models, 13
- separation angle, 46
- Session, 6, 7, 12
- Session Management, 12
  - Close Session, 12
  - Open Session, 12
  - Save Session, 12
  - Save Session As, 12
- Settings. *See* User Settings
- shapes, 44
- Site Administration, 2
- snapping tool, 67
  - SHIFT, 67
- Source DEM, 10, 59, 63
- Spatial Reference Systems, 13
  - Configuring, 13
  - Spatial Referencing dialog, 13
- Split Edge, 62
- SRS. *See* Spatial Reference System
- Subdivide Polygon*, 46



## T

- Target, 55
- target circles, 45, 46
  - settings, 55
- Terrain, 30
- text box, 45
- textbox, 56
  - settings, 56
- Textbox
  - editing, 47
- Type Conversion, 38

## U

- UI Conventions, 1
- undo, 59
- User Interface (UI), 4
  - Elements of the UI, 4
- User Settings, 26, 48
  - Data Discovery, 30
  - Display, 33
  - Footprints, 49
  - Geolocation Formats, 27
  - Grid Lines, 34
  - Measurement, 29
  - Mensuration Tools, 50
  - Pixel Cursor, 32
  - Point, 51
  - Point Marker, 52
  - Polygon, 53
  - Polyline, 54
  - Region of Interest, 35
  - Target, 55
  - Terrain, 30
  - Textbox, 56

## V

- vector data

- export, 40
- vector layers, 57
- vectors
  - circle, 61
  - cones, 66
  - creating, 57, 63
  - creation, 60
  - editing, 59
  - ellipse, 61
  - exporting, 58
  - finalize, 63
  - layer management, 57
  - line, 61
  - loading, 59
  - point, 61
  - polygon, 61
  - pyramids, 66
  - renaming, 58
  - save, 58
  - save as, 58
  - selection, 64
  - vector layers, 57, 59
- Viewer
  - Auxilliary, 10
  - divider, 9
  - Send to Left Viewer, 9
  - Send to Right Viewer, 9
- Visibility, 43, 59, 63

## W

- WGS84, 13, 27

## Z

- Z Up, 10, 33
- zoom, 9
- zoom indicator, 26